



Dominik Beck | Papyrus Group IT
Process Manager Supply Chain

About Papyrus

SAP EWM implementation at Papyrus

Approach and learnings from the project

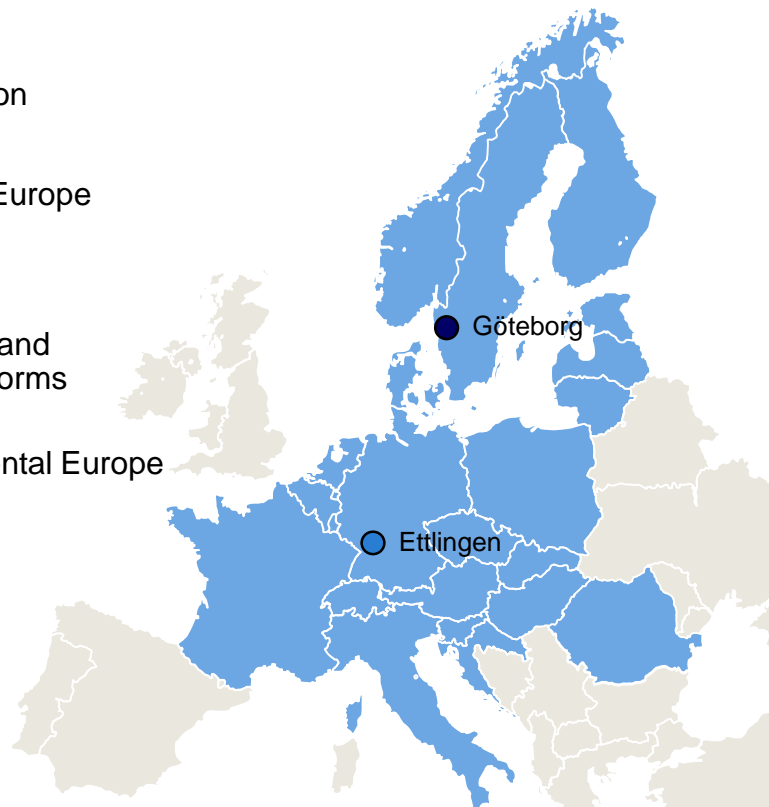
Functional scope of SAP EWM at Papyrus

Who we are...

Europe's leading merchant for
paper, packaging and supplies

Facts and figures 2014

Net sales:	EUR 1 567 million
Deliveries:	1 570 ktonnes
Market presence:	20 countries in Europe
No. of customers:	> 65 000
No. of employees:	1 877
Distribution:	38 warehouses and cross-dock platforms
Market position:	No. 2 in Europe No. 1 in Continental Europe



- Austria
- Belgium
- Czech Rep.
- Croatia
- Denmark
- Estonia
- Finland
- France
- Germany
- Hungary
- Italy
- Latvia
- Lithuania
- Luxembourg
- Netherlands
- Norway
- Poland
- Romania
- Slovakia
- Slovenia
- Sweden
- Switzerland

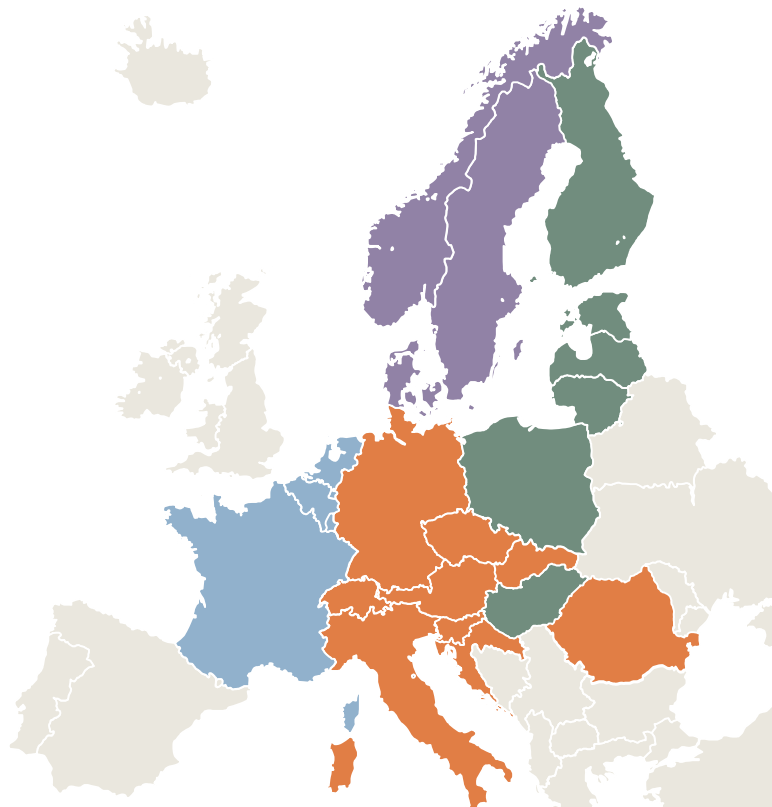


Our history

PAPYRUS 



SAP Roll-outs Papyrus 2006-2012



	# Countries	# SAP users
Base installation former subsidiaries of Schneidersöhne	8	800
Phase 1 2006-2008	6	+150
Phase 2 2008-2010	3	+400
Phase 3 2011-2012	3	+300

About Papyrus

SAP EWM implementation at Papyrus

Approach and learnings from the project

Functional scope of SAP EWM at Papyrus

Background

- Demand to support large-scale warehouses and to control complex Logistics processes
 - Current solutions based on SAP ERP WM reached or exceeded their limits
 - No further SAP development of ERP WM
- no security of investment, no future-proof solution



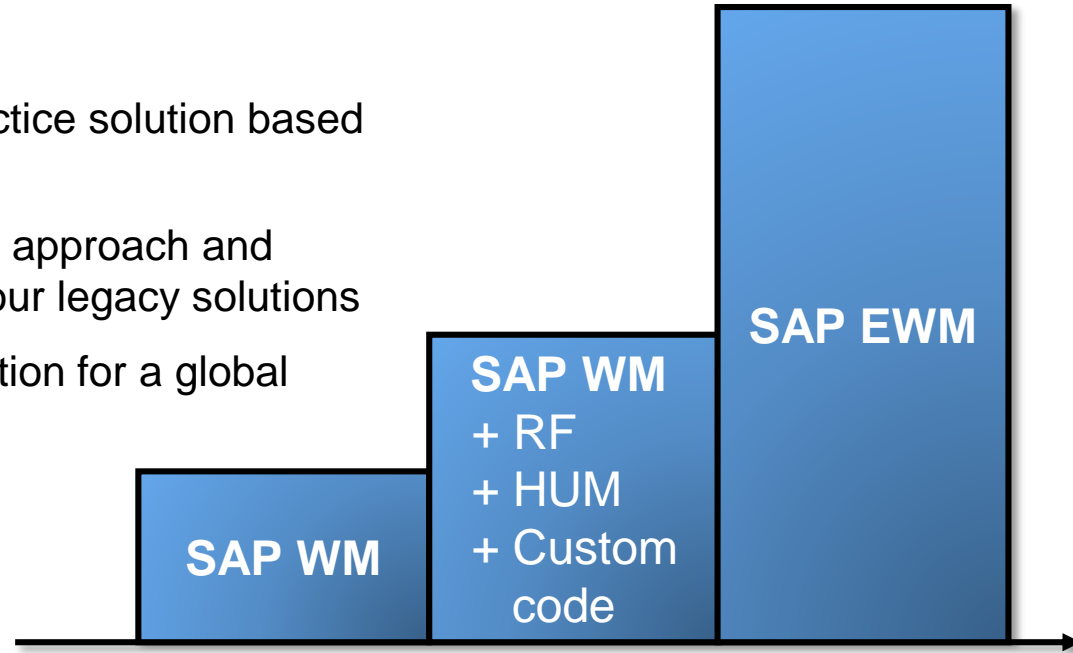
Decision for SAP Extended Warehouse Management

- Functional capabilities, flexibility in process setup
- Technology and processes fit to our SAP landscape
- Using (and not losing) existing SAP know-how for implementation as well as further projects and support
- Well-known, large and international software supplier
- License cost



Objective

- Implement a new common best practice solution based on SAP EWM
- Exploit the by far superior functional approach and optimization potential compared to our legacy solutions
- Provide a flexible and scalable solution for a global roll-out roadmap



About Papyrus

SAP EWM implementation at Papyrus

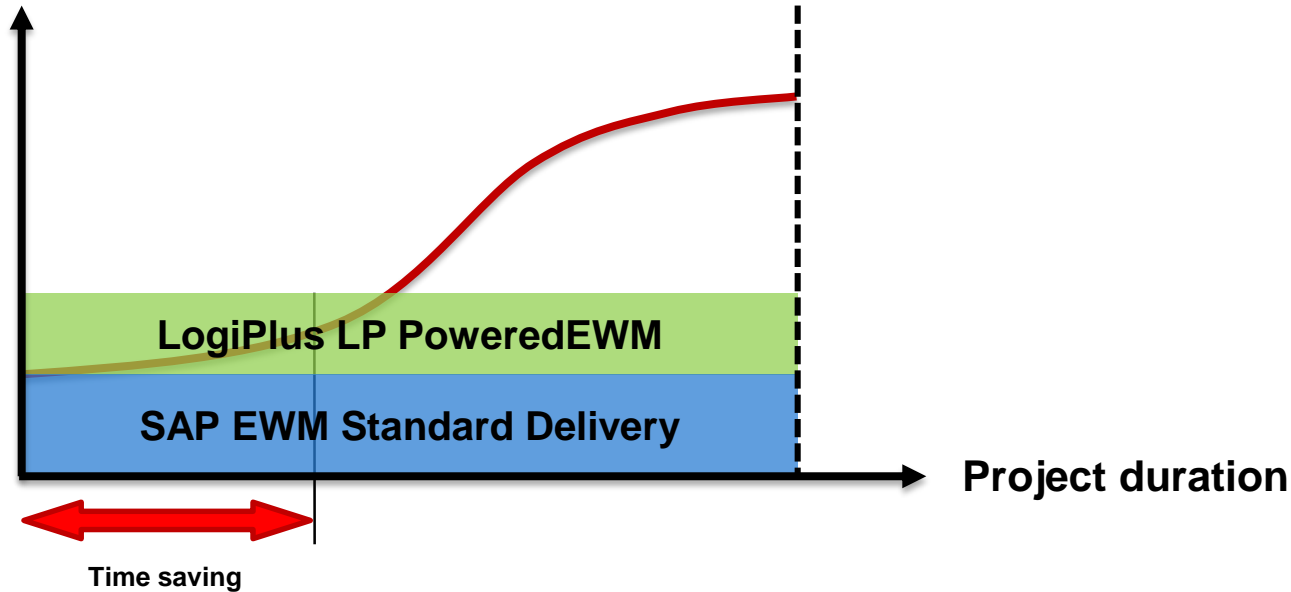
Approach and learnings from the project

Functional scope of SAP EWM at Papyrus

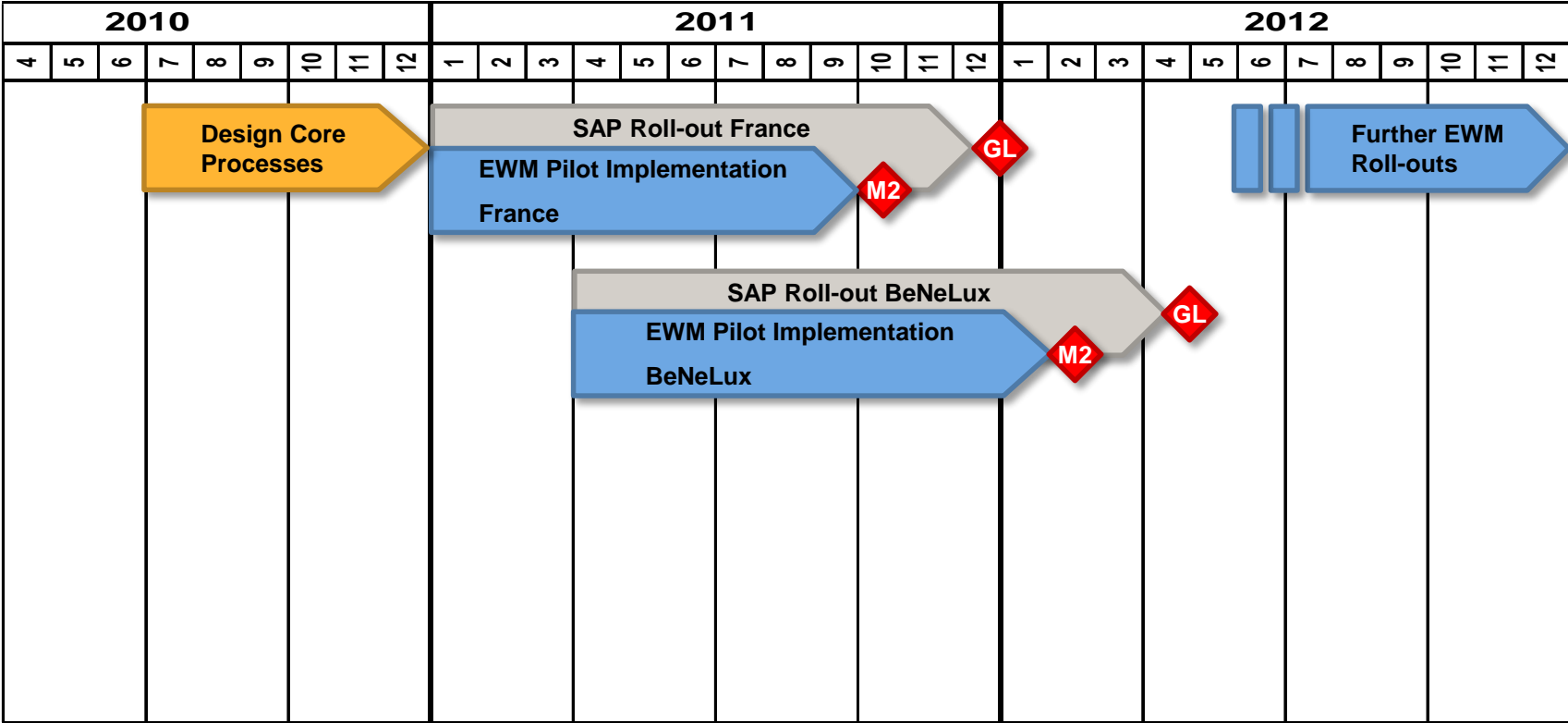
Learning curve

Level of completion

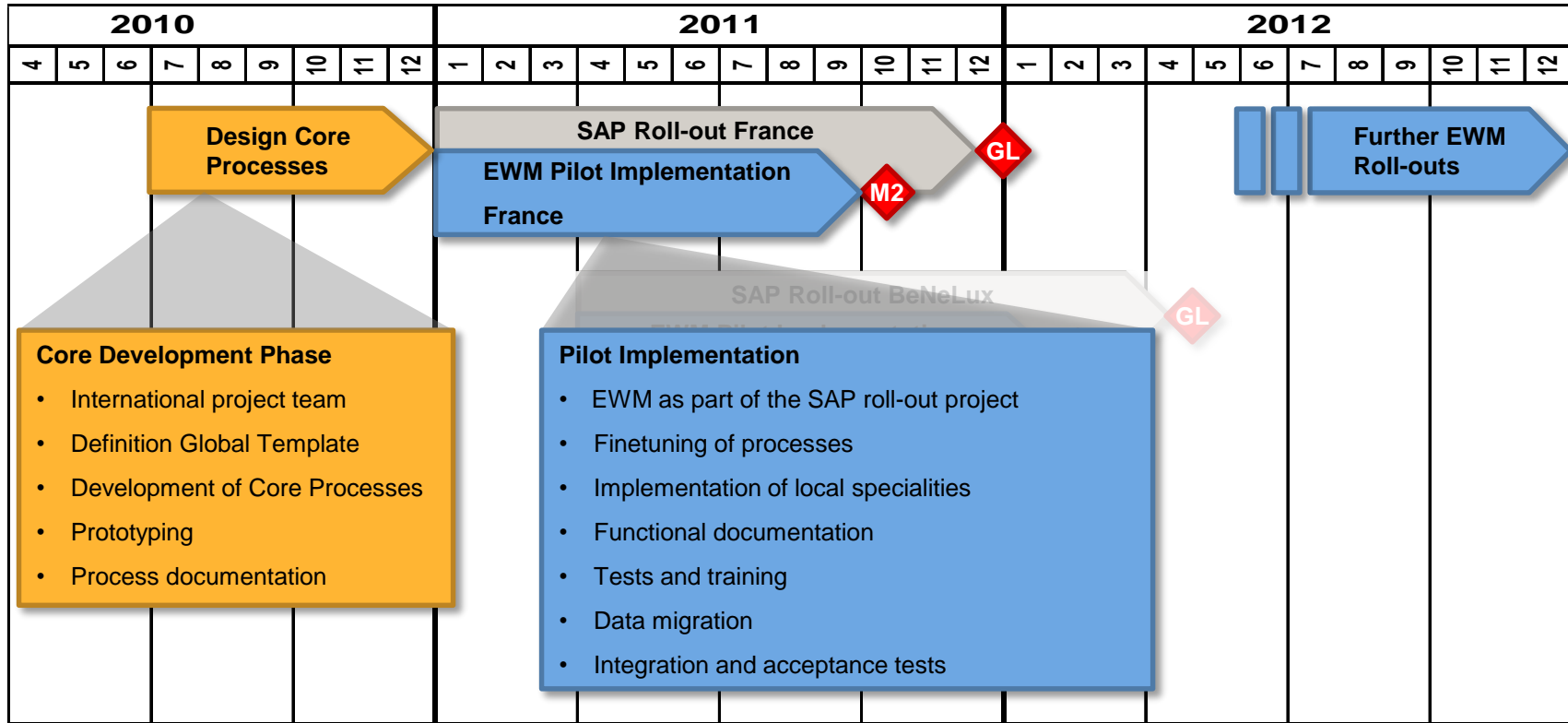
Go-Live






Project structure / timeline

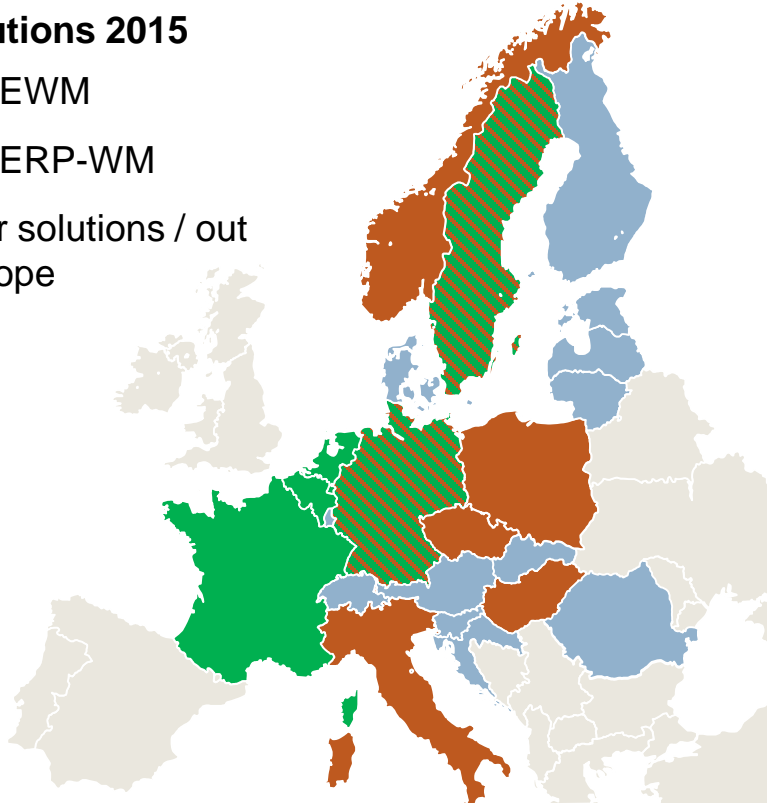


Project structure / timeline



WMS solutions 2015

-  SAP EWM
-  SAP ERP-WM
-  Other solutions / out of scope



Target:

Replace legacy solutions based on SAP ERP-WM

Strategy:

- Business-case driven: Roll-out to most important warehouses
- Project driven: Replace legacy WMS as part of another project (e.g. warehouse move)

Time benefit with rapid deployment solution (LP Powered EWM)

- 3-4 months shorter project runtime
- Starting point is already a fully working example warehouse
- Enriched content: additional developments and a flexible and user-friendly RF framework
- Important for decision: RDS scope must fit to your process scope

Project coaching approach

- Mixed teams of internal IT, external consultants and functional experts
- Cost saving compared to usual consulting approach
- Empowerment of internal IT for support, change requests and further projects, building and keeping in-house competence

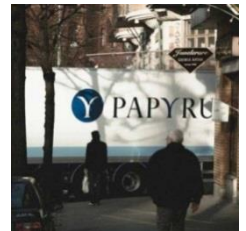
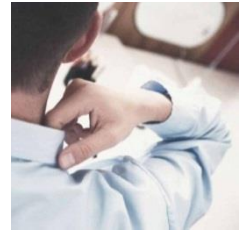


Functional side

- Flexibility of process setup is opportunity **and** challenge
- Some functional gaps in SAP standard delivery (extensions are possible)
- ERP-EWM interface monitoring is a constant struggle

Technical side

- SAP EWM server \neq SAP ERP server (parallel processing, qRFC interface, ITS)
- Start early with an archiving concept



About Papyrus

SAP EWM implementation at Papyrus

Approach and learnings from the project

Functional scope of SAP EWM at Papyrus



Functional scope EWM at Papyrus



Picking Planning Cockpit	Quantity and status update from EWM to ERP before Goods Issue	Value Added Services Make-to-order Make-to-stock
Multi Order Picking Partial quantity picking Full pallets	Cross-Docking Transportation XD Opportunistic XD	Subcontracting
Integration with ERP shipments Loading processes	Goods Receipt EDI Shipping Notifications Expected Goods Receipts	Subsystem Integration Kardex Shuttle Fork Scale System
ERP delivery changes after replication to EWM	Narrow-aisle storage Double-stacking Oversize pallets	Supplier Integration Supplier Consignment EDI-VMI

System impressions

Picking Planning Cockpit (Warehouse FR01)

Queues Det.data Prio. WT-Cre.: 70

Hierarchy	Customer No. & ...	P	Picking ...	P.
FR01	*****	4 ***	3	
10.11.2011	*****	4 ***	3	
F213F1	11348168 - le Vulc...	0 ***	0	
8016953452	11348168 - le Vulc...	0 PP03	0	
8016953453	11348168 - le Vulc...	0 PP02	0	
F1T5F1	11334843 - Sfica	0 PP01	0	
8016953460	11334843 - Sfica	0 PP01	0	
F1T4F1	11335119 - SMS D...	0 PP01	0	
F1B5F1	*****	2 *****	8	
F1B4F1	*****	1 ***	2	
F176F1	*****	0 <STAND...	0	
F172F1	XFR01 - UNIVERSI...	0 <STAND...	0	
F168F1	*****	1 ***	1	
F164F1	11321426 - Carrica...	0 <STAND...	0	


WhNo - Queues - Resources	No. WTs	Open WOs	C
FR01	326	307	
<STANDARD>			
BACK_PICK	3	3	
FP01	43	82	
FRONTGM02			
FP02	57	58	

OK?	Route	Ext. Doc.	Repl.	Items	No. full picks	Partly Picks	Plann...	Picki...	PickQ Full	PQ Partly	Pro. Prio.	Load. Bay
	F1T4F1	8016953466	◇	2	0	0	●	●	FP02	PP01	10	105
	F1T5F1	8016953460	◇	2	0	0	●	●	FP04	PP01	99	134
	F213F1	8016953452	◇	1	0	0	●	●	FP03	PP03	99	126
	F213F1	8016953453	◇	3	0	0	●	●	FP03	PP02	99	134
	F1B5F1	8016953372	◇	1	1	0	■	●	FP02	<NO WT>	48	P 30
	F1B5F1	8016953428	◇	1	4	0	■	●	FP01	<NO WT>	48	P 30
	F1B5F1	8016953420	◇	1	0	1	■	●	<NO WT>	PP01	48	P 30
	F1B5F1	8016953373	◇	2	3	1	■	●	FP02	PP01	48	P 30


**Papyrus Picking
Planning Cockpit**

System impressions

Goods Receipt - Enter Item Quantity

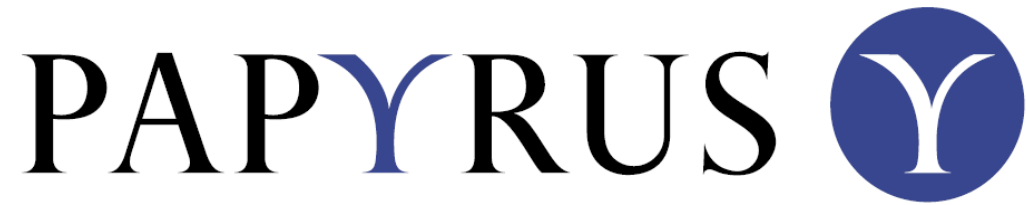
Purchase Order	4503194264	1	
Product	88141058	Adagio 80g 420x297 R saumon	
Quantity	50.000	SH	<input type="button" value="Clear"/>
Delivered Qty.	25000	SH	
Stock type	9F Unrestricted use Papyrus		

Full pallet pick

HU	1260328924	
Src	PI-35-1-B	
MatNo	88141001	
Adagio 80g 450x640 R canari		
Quantity	20.000	SH
Scan HU		8/9
<input type="button" value="Change DLV"/>		
	<input type="button" value="nOK"/>	

User-friendly screens for forklift terminals and handhelds





Thank you for your attention.