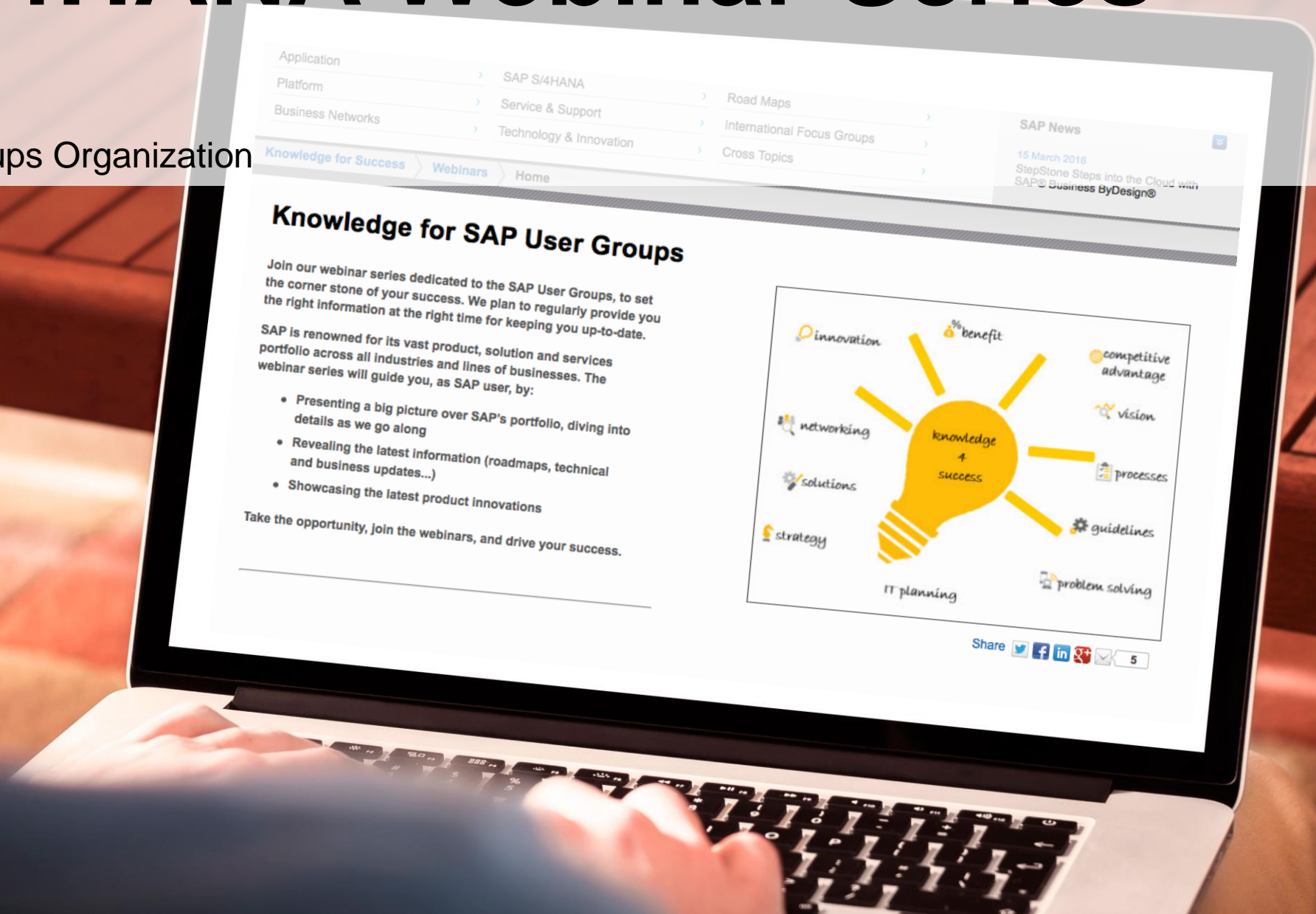


SAP S/4HANA Webinar Series

SAP Global User Groups Organization



S/4HANA – Webinar Series 4 SAP User Groups

Introduction to SAP S/4HANA	Bert Schulze	June 14
Introduction to SAP S/4HANA Cloud	Yannick Peterschmitt	June 16
Introduction to SAP S/4HANA On-Premise Edition	Christian Vogler	June 21
S/4HANA Adoption: S/4HANA Activate	Holger Steffens	June 23
S/4HANA Transition: Landscape Transformation	Roland Hamm	June 28
S/4HANA Transition: System Conversion	Christoph Nake	June 30
S/4HANA Transition: New Implementation (Green Field Approach)	Kristina Henn	July 5
S/4HANA Services: Premium Engagement Packages	Meinolf Kaimann & Danone	July 6
S/4HANA Services: HANA Cloud Integration	Udo Paltzer	July 12

Disclaimers

The information in this presentation is confidential and proprietary to SAP and may not be disclosed without the permission of SAP. Except for your obligation to protect confidential information, this presentation is not subject to your license agreement or any other service or subscription agreement with SAP. SAP has no obligation to pursue any course of business outlined in this presentation or any related document, or to develop or release any functionality mentioned therein.

This presentation, or any related document and SAP's strategy and possible future developments, products and or platforms directions and functionality are all subject to change and may be changed by SAP at any time for any reason without notice. The information in this presentation is not a commitment, promise or legal obligation to deliver any material, code or functionality. This presentation is provided without a warranty of any kind, either express or implied, including but not limited to, the implied warranties of merchantability, fitness for a particular purpose, or non-infringement. This presentation is for informational purposes and may not be incorporated into a contract. SAP assumes no responsibility for errors or omissions in this presentation, except if such damages were caused by SAP's intentional or gross negligence.

All forward-looking statements are subject to various risks and uncertainties that could cause actual results to differ materially from expectations. Readers are cautioned not to place undue reliance on these forward-looking statements, which speak only as of their dates, and they should not be relied upon in making purchasing decisions.



Introduction to SAP S/4HANA, on-premise edition 1511

Christian Vogler

SAP S/4HANA Product Management

SAP SE





Introduction to SAP S/4HANA, on-premise edition 1511

Agenda

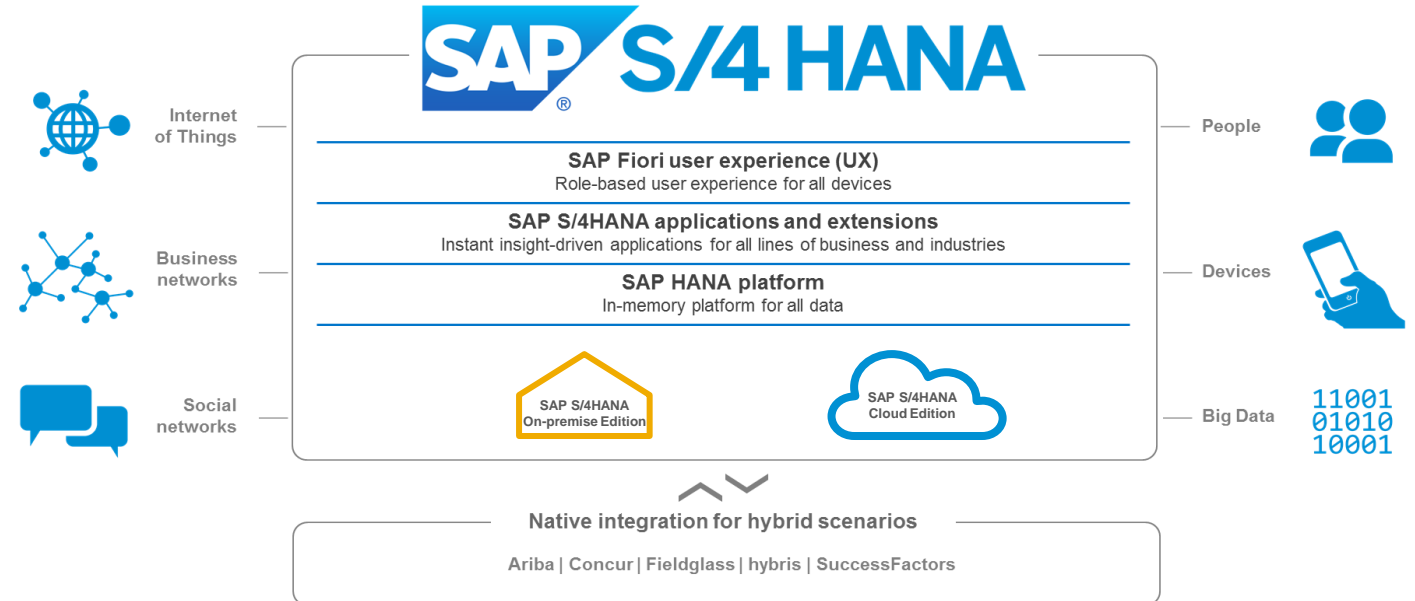
- 1. What is SAP S/4HANA, on-premise edition 1511?**
2. Current Solution
3. Roadmap

SAP S/4HANA

Our Next-Generation Business Suite

SAP S/4HANA build the next-generation business suite

- » Innovative in-memory Database
- » New architecture and data models
- » Renewed applications
- » New UI technology
- » Cloud & on-premise deployment models
- » Natively integrated



SAP S/4HANA is a *new* product line *(it is not a legal successor of any SAP Business Suite product)*

The classical SAP Business Suite & SAP ERP is a separate product line and will still be available.

SAP S/4HANA

Value proposition

SAP S/4HANA is a full enterprise management suite, is SAP's next generation Business Suite and is a completely new product and code line and covers the areas of finance, sourcing & procurement, asset management, manufacturing and supply chain.

Key benefits

Instant, real-time insight for better decisions

- in-memory technology
- embedded analytics

Reinvented processes for higher performance

- maximized throughput and speed
- native integration to SAP solutions

SAP Fiori user experience for higher productivity

- intuitive on all devices, mobile first
- proactive decision-making support

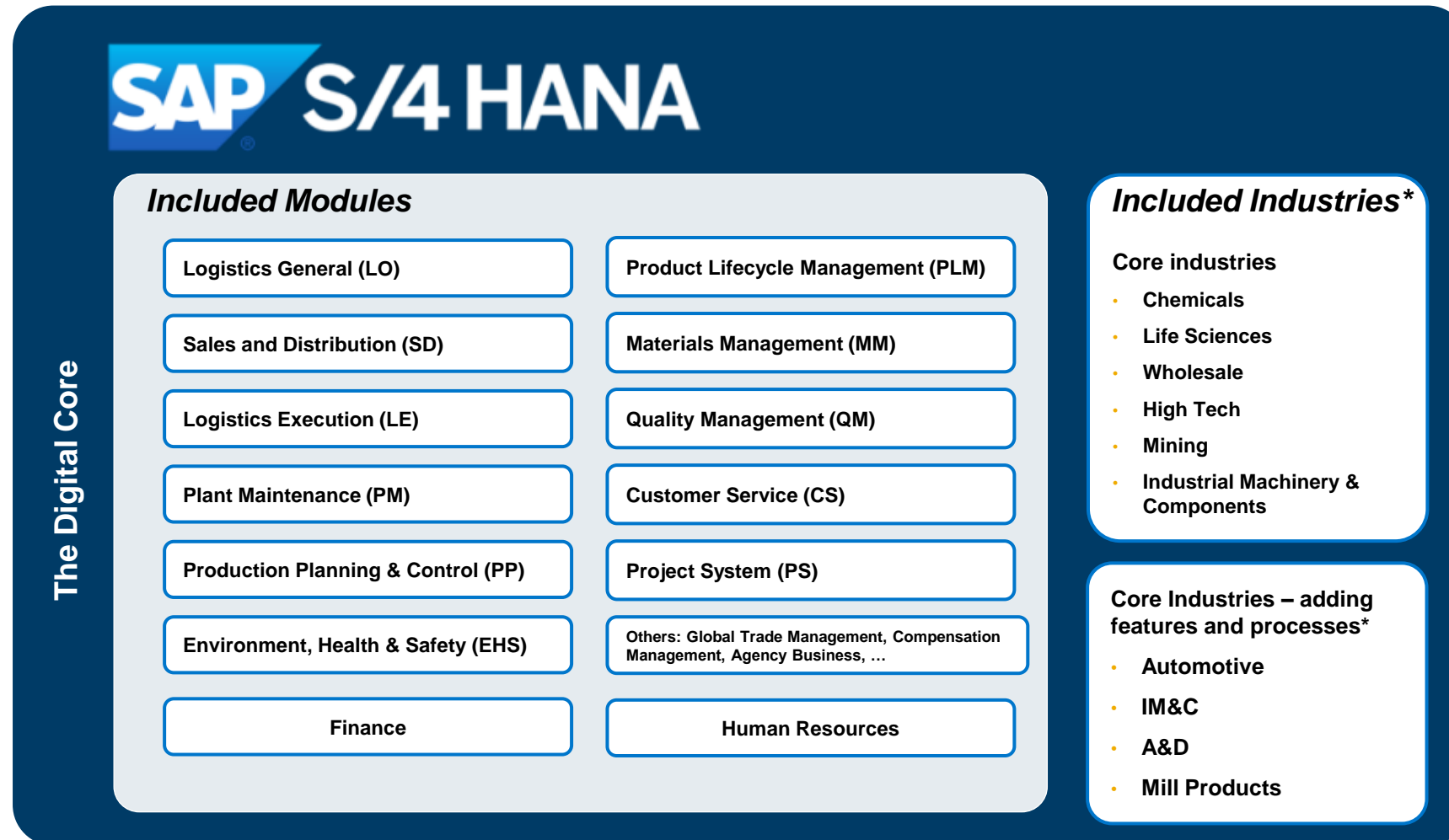
Simplified Architecture for lower TCO

- lean data footprint



SAP S/4HANA

Next-Generation Business Suite



Feature and function parity to SAP ECC 6.0x

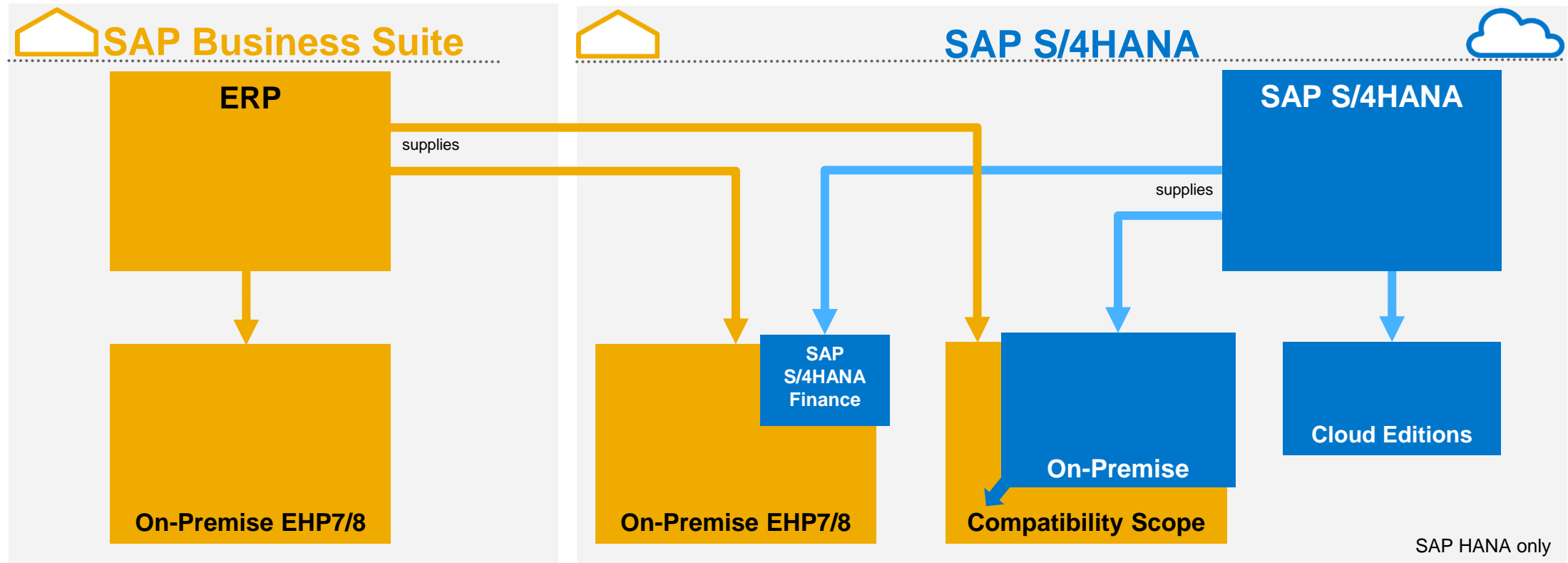
plus

- » Major innovations in core modules like **Finance** and **Materials Management and Operations**
- » Inclusion of additional **industries** in the Core
- » Major Simplifications (http://help.sap.com/s4hana_op_1511)
- » Supporting **digital Trends** like Internet of Things, Business Networks, etc

*See Roadmap

SAP S/4HANA and SAP Business Suite

Understanding the difference



SAP HANA only

*Classical ERP on any
DB incl. HANA*

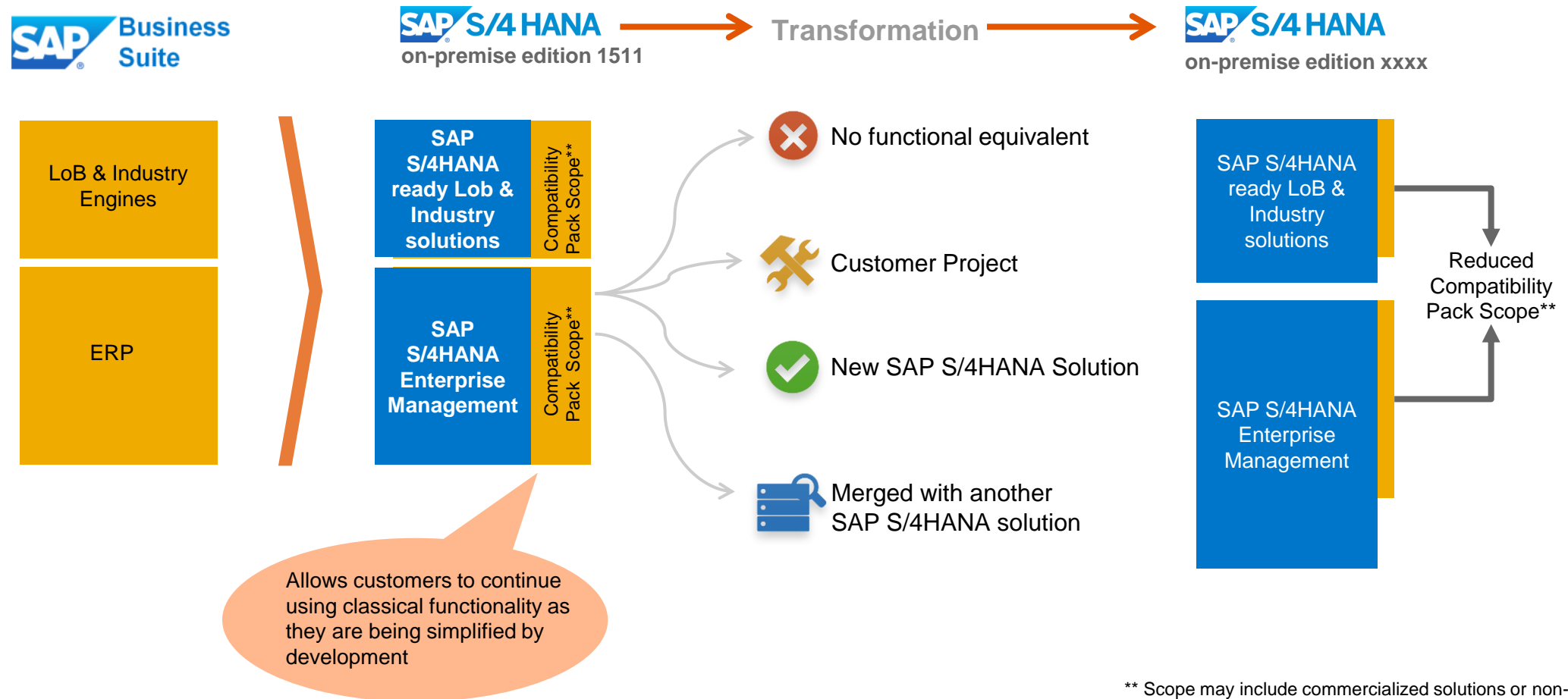
*SAP S/4HANA Finance
as innovation package*

*Compatibility scope
to support migration*

*Cloud Qualities also
available On-Premise*

SAP S/4HANA, on-premise edition 1511

Why Compatibility Pack?



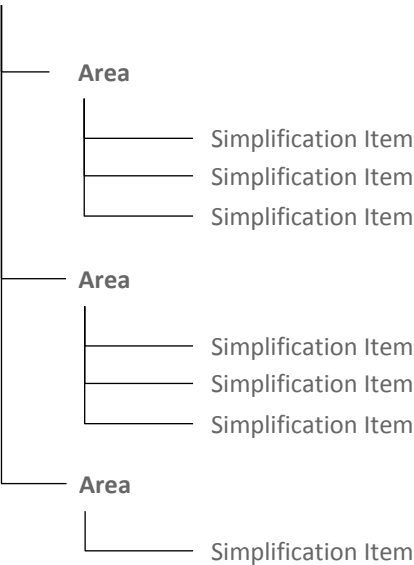
SAP S/4HANA, on-premise edition 1511

Simplification List – Application-area-wise sorting of items



Master Data	CRM	Sales and Distribution
Procurement	MM / SRM	Logistics
Finance	HCM	
Basic Topics	Cross Topics	

Simplification List

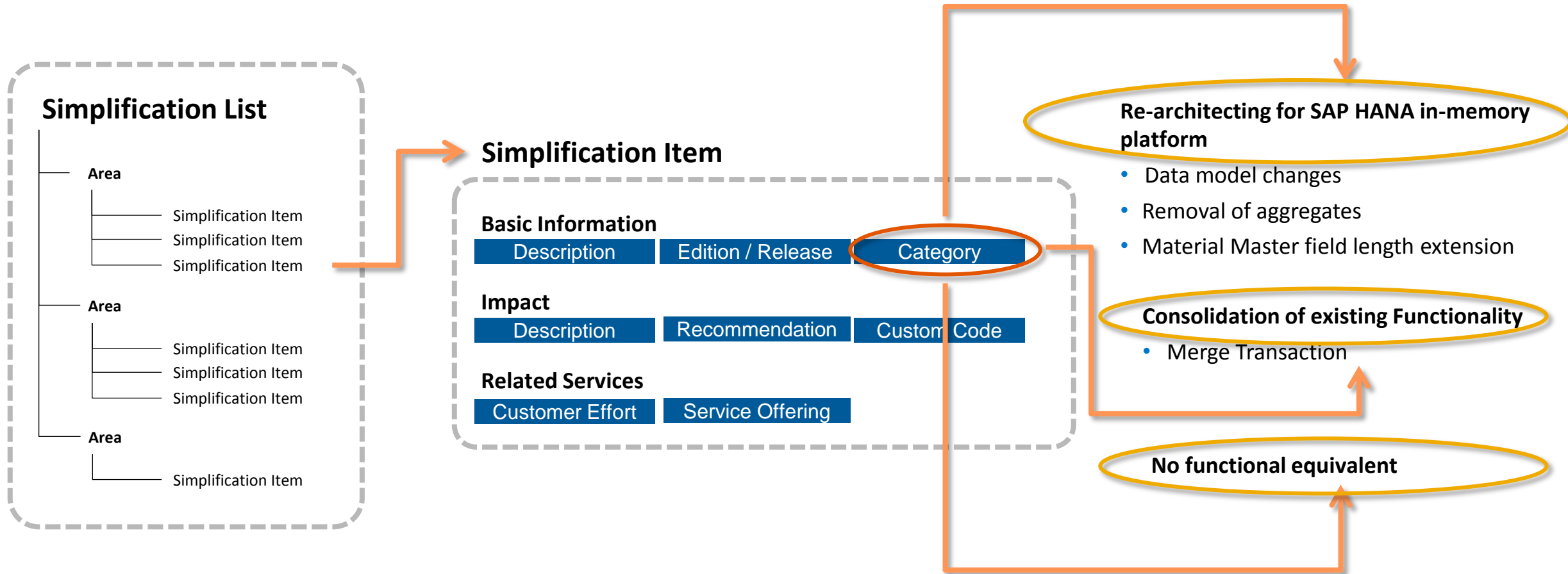


Streamlined Procure to Pay 5 Solutions (+)	Accelerated Plan to Product 7 Solutions (+)	Optimized Order to Cash 3 Solutions (+)	Enhanced Request to Service 4 Solutions (+)
HR Connectivity 1 Solution (+)	Core Finance 2 Solutions (+)		

Basic Information	Description	Edition / Release	Category
Impact	Description	Recommendation	Custom Code
Related Services	Customer Effort	Service Offering	

SAP S/4HANA, on-premise edition 1511

Simplification List – Overview



SAP S/4HANA, on-premise edition 1511 FPS02

Simplification List

- » Currently we have **293** Simplification List Items. They fall basically into three categories
- » Based on our current project experience in average **30-50** Simplification Items are finally relevant for a dedicated customer

~17%

Change of existing functionality: 17% (50/293)

Example: Simplifications of Data Structure (for example in Sales & Distribution)

~59%

~ 33%
functional
equivalent
available

~ 26%
functional
equivalent
not
available

**Functionality not available within SAP S/4HANA
(with or without functional equivalent): 59%
(175/293)**

Example:

- FI-AR-CR Credit Management is not available, functional equivalent is FIN-FSCM-CR
- ITS Services in QM are not available without direct successor

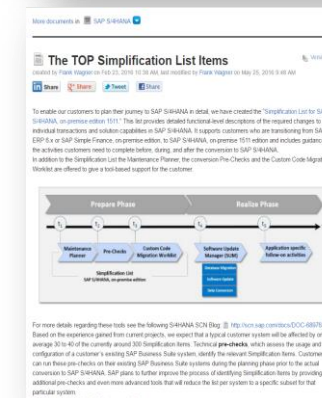
~24%

**Not the target architecture: 24% (68/293)
functionality still available**

Example: The Warehouse Management (LE-WM) is not the target architecture. The (already available) alternative functionality is SAP EWM.



Current Version: Simplification List for SAP S/4HANA, on-premise edition 1511 FPS02: [Link](#)



SAP S/4HANA SCN: Further Details for selected Simplification Items (e.g. Business Partner Approach, Material Field Length extension, ...): [Link](#)

SAP S/4HANA trial

Introducing SAP S/4HANA, the digital core designed to help you run simple in a digital economy.

Start your trial now

Contact Us

Explore SAP S/4HANA with a 30-day trial and evaluate digitized business processes to see firsthand how a digital core can impact your organization.

See how the personalized user experience allows instant insight-to-action from any device to drive on the fly business decisions and immediate execution. And use modern visualizations such as maps and infographics to unlock the value of all your data. Designed for IT professionals, the SAP S/4HANA trial provides a complete on-premise landscape, deployed via AWS, to explore the power, flexibility, and customization available in our next generation business suite.

Get started now and discover the full potential our digital business foundation can bring to your enterprise.

Get your guided tour in the on-premise edition now!

<https://go.sap.com/cmp/oth/crm-s4hana/s4hana-on-premise.html>



Introduction to SAP S/4HANA, on-premise edition 1511

Agenda

1. What is SAP S/4HANA, on-premise edition 1511?
- 2. Current Solution**
3. Roadmap

Hello **Christian Vogler** from SAP

Welcome to Innovation Discovery

Find the innovations and features that
you can turn into tangible value for your business

DISCOVER INNOVATIONS

HOT TOPICS

SAP S/4HANA

272

Innovations related to
SAP S/4HANA

User Experience

257

Innovations related to
user experience

Digital Transformation

119

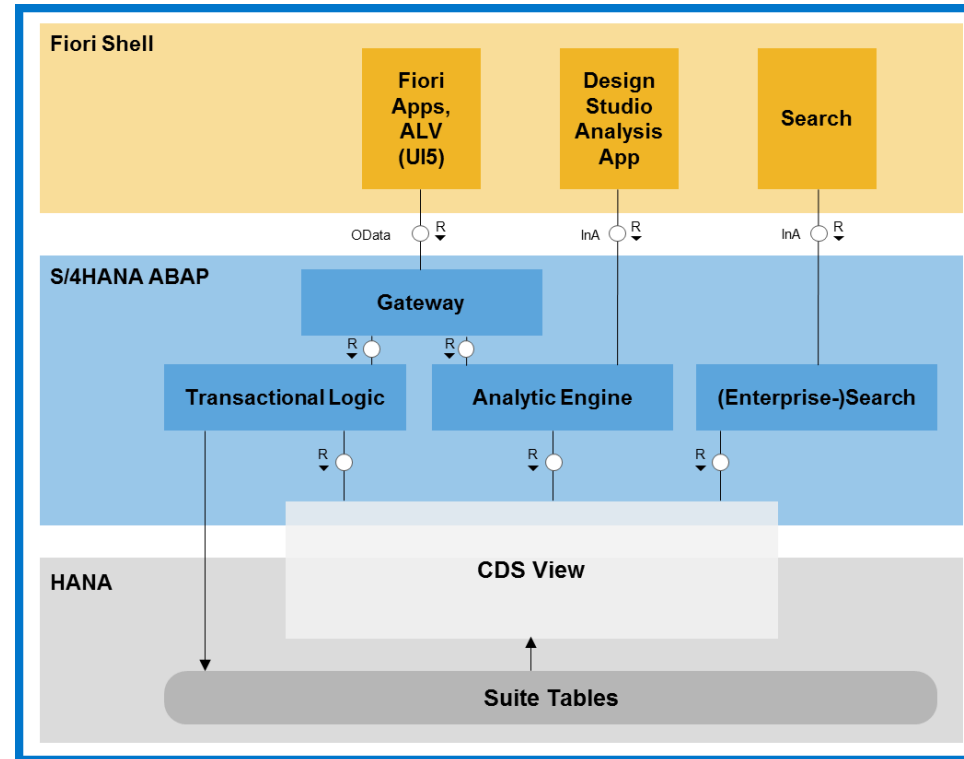
innovations related to
digital transformation

High Level Stack Architecture – Cloud & On-Premise

Re-architecting for in-memory platform

SAP HANA as Platform

- OLAP & OLTP merge
- In-memory compression
- Code push down
- Increased speed for data



Responsive design

SAP Fiori as user experience paradigm across applications

- Web based, All devices
- Role based
- Decisive, Predictive, Simulate

Principle of One

Simplification of Applications, Data model

- 1 recommended solution (Principle of 1)
- No Aggregates & No Indices
- Higher flexibility & Throughput
- Data footprint reduction

Core Business Objectives of Discrete Industry Companies

Customer Value Chain

R&D

Sales

Supply Chain

Manufacturing

Aftermarket Service

Finance, Compliance

Business Initiatives / Opportunities

Improve On-time Delivery

Reduce Inventory

Increase Production Throughput

Reduce Manufacturing Cost and Improve Quality

Reduce Warranty Costs

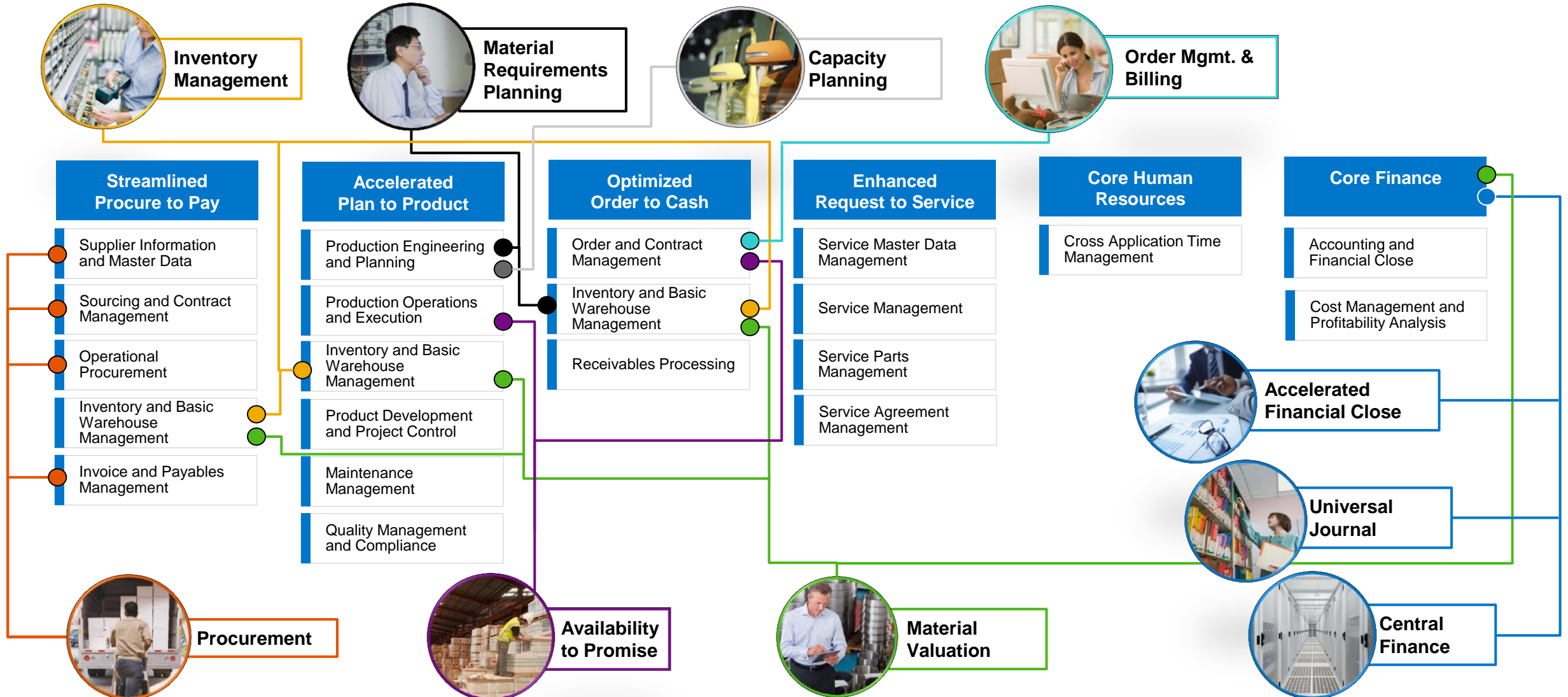
Increase Sales Effectiveness

Profitable Service Growth

Improve Finance Effectiveness and Efficiency

SAP S/4HANA, on-premise edition 1511

Product Scope structure mapped with Key innovations



Real Time Inventory Management

Business Challenges

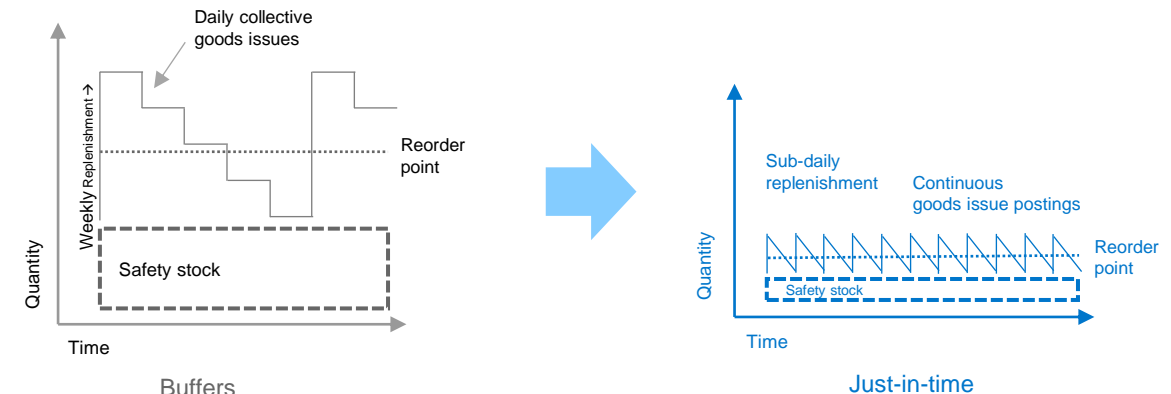
- » Low throughput prevents real-time inventory
- » Missing embedded and real-time analytics
- » Missing comprehensive data model
- » Process & data redundancies increase effort

Capabilities

- » Real-time processing of inventory postings and visibility of inventory values
- » Posting of finest granularity like handling unit, lot size 1, sensor data
- » Decreased stock levels (e.g. reduce buffers) due to increased transparency
- » Easy to consume data model supporting flexible analytics
- » Manage the changing demand for smaller lot sizes passing through the logistic operations

Business Benefits

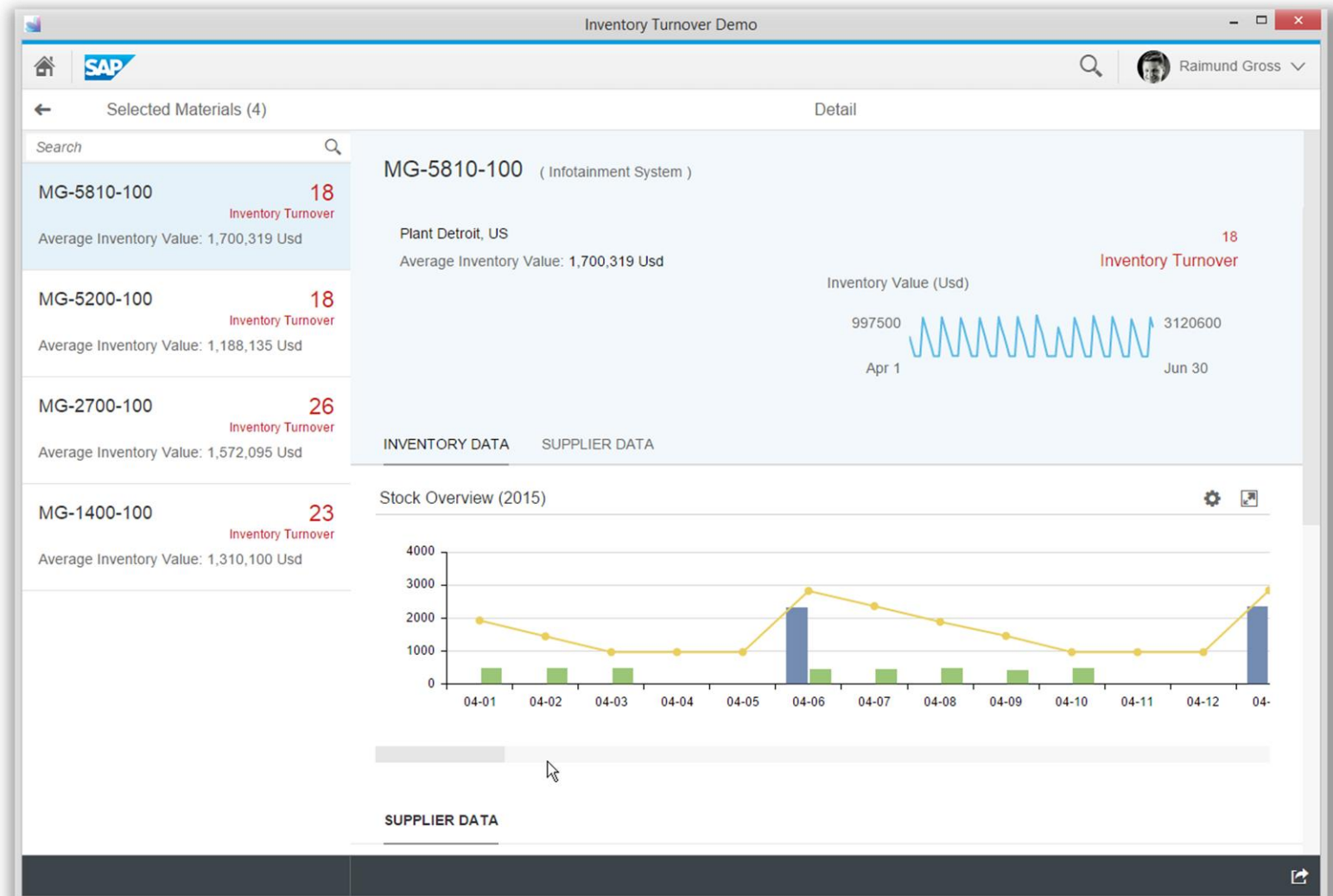
- » Improve on-time delivery
- » Increase inventory turnover
- » Reduce cost of inventory
- » Single source of truth of inventory in one system



Real Time Inventory Management

Key benefits

- » Comprehensive stock overview per material on the time scale
- » Display of the most important inventory key figures



Material Requirements Planning

Business Challenges

- » Increasing customer service
- » Low inventory accuracy
- » Revenue losses due to stock-outs
- » On-time delivery performance
- » Missing parts in production

Business Benefits

- » Clear visibility across the material flow increases user acceptance and efficiency
- » Proactive decision making in response to changing demand
- » Flexible tailoring of available capacities and receipts to meet required quantities
- » Real-time inventory monitoring and automating the creation of procurement proposals

Capabilities

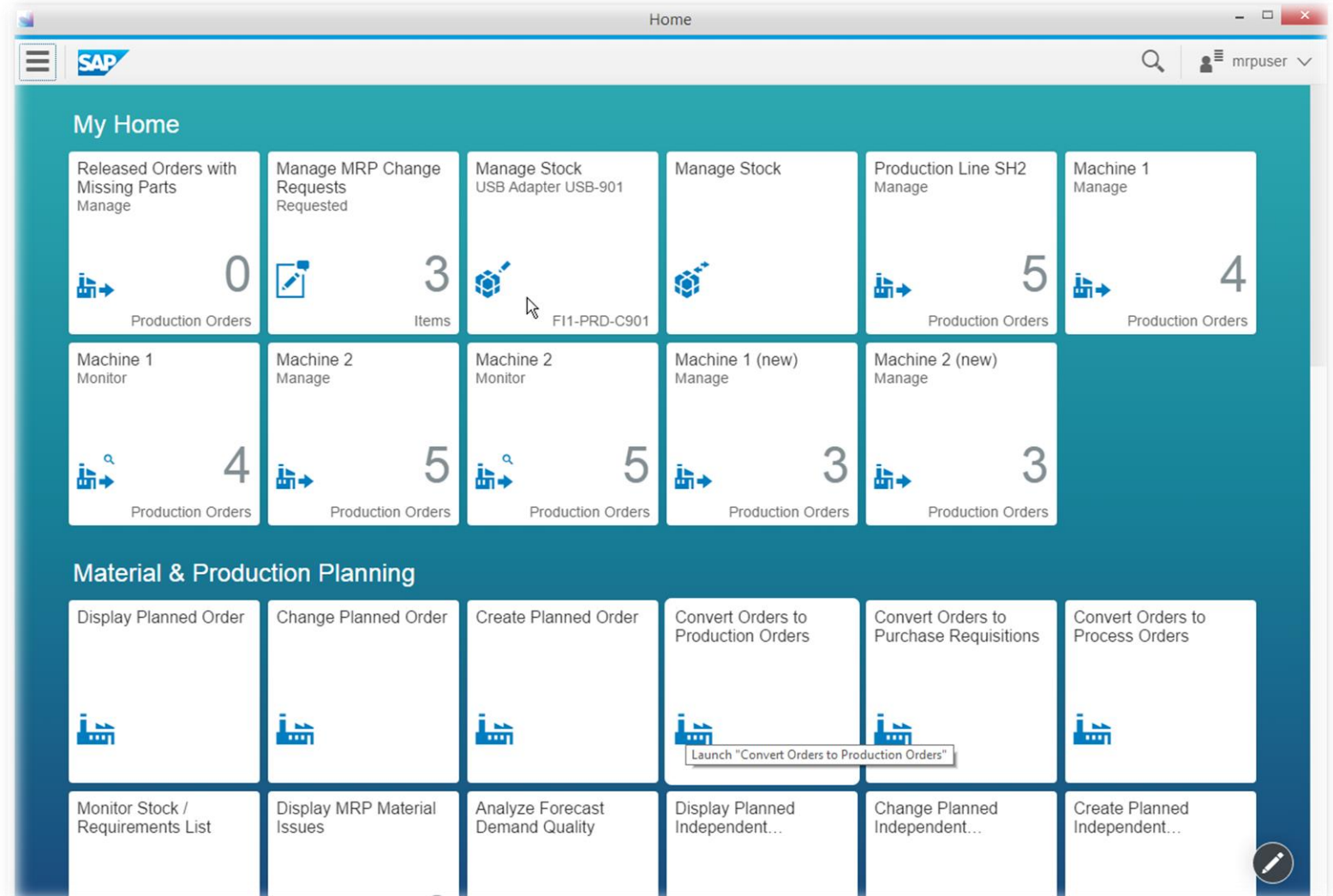
- » Prioritized view on material flow issues
- » Real-time alerting based on current stock requirements situation
- » System-generated solution proposals
- » MRP can run as frequently as required (up to 10 times faster)
- » Demand information is propagated faster through the supply chain

Fiori Launchpad

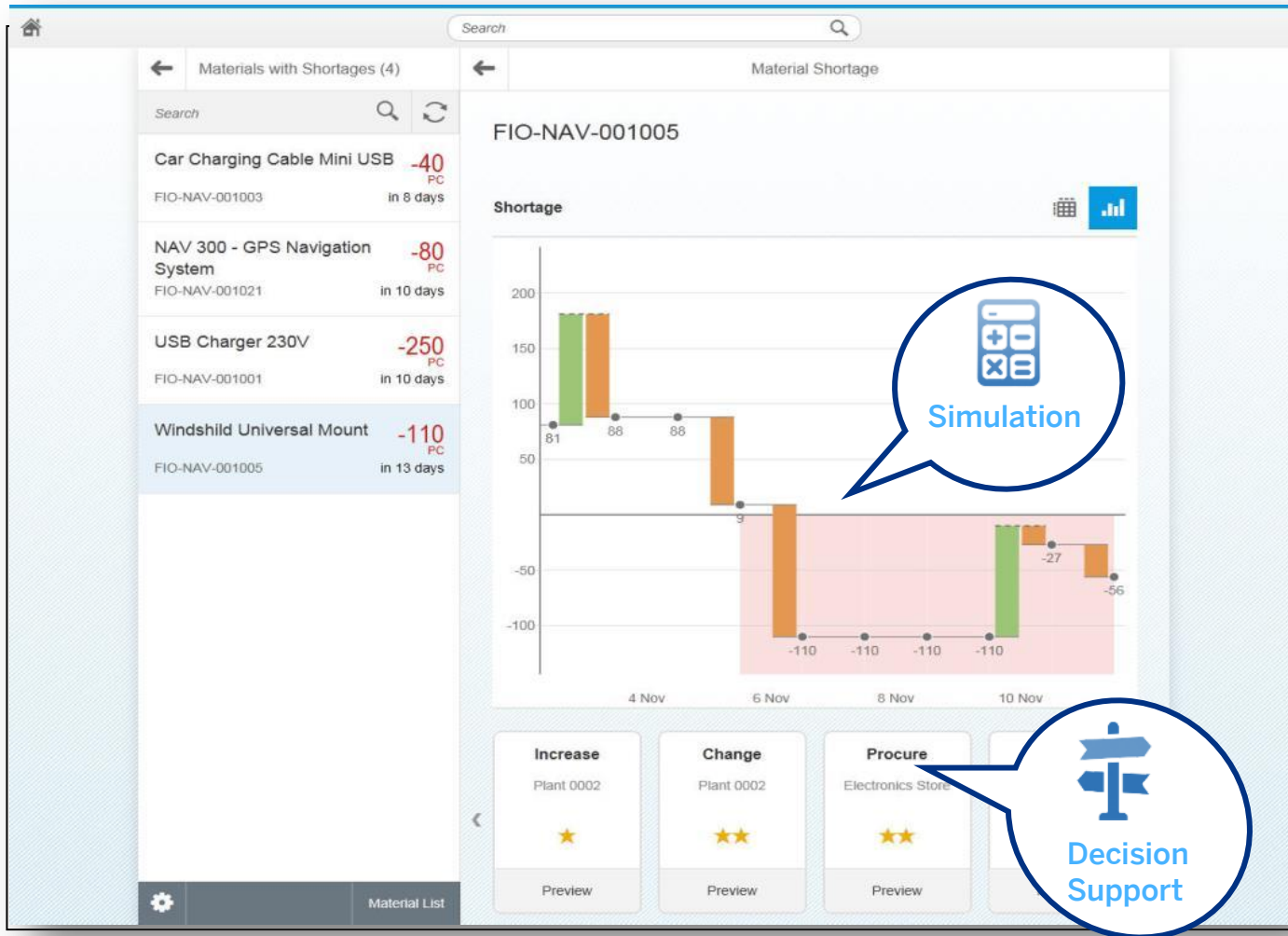
Home screen of the MRP user

Key benefits

- » Collection of transactional and analytical FIORI apps necessary for the daily work



On the fly simulation and decision support



- » Real time data from all areas of material management including procurement lead times, inventory stock availability, lot sizes, manufacturing scheduling and sales orders across multiple sites
- » Suggestion of potential solutions for the shortage through “Solution Cards” with all information needed to resolve the material shortage (e.g. Reschedule Purchase Order, Increase Purchase Order, stock transfers).
- » Real Time Simulation computes the future inventory situation in detail. The optimization algorithms make use of the simulation to find the ideal replenishment strategies
- » Daily work tasks focused on exceptions and on the most urgent problems with the highest financial implication

Decision Support & Solution Proposals

Key benefits

- » Direct automatic decision support with various solution proposals how to solve the shortage situation
- » Direct further navigation possible to initiate an appropriate solution measure

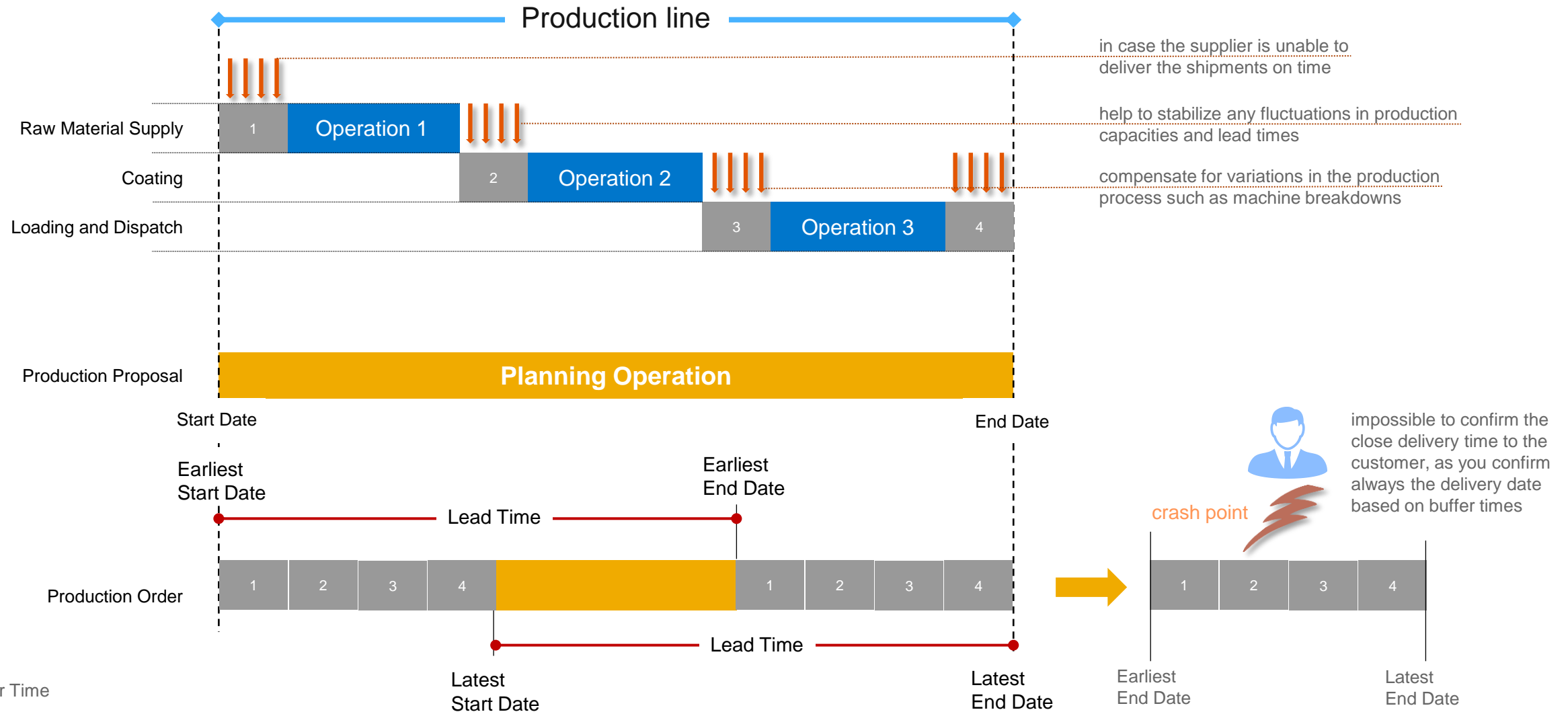
The screenshot displays the SAP Material Shortage interface. The left sidebar shows the material 'USB Adapter USB-901' (FI1-PRD-C901) with a 'processed' status. The main area shows a shortage for 'USB Adapter USB-901' (FI1-PRD-C901 (Plant P001)). A table lists the shortage details:

Date	MRP Element	Quantity	Available
	Stock No Safety Stock	200 EA	200 EA
28.09.2015	OrdRes 4644-9 FI1-PRD-M120	300 EA	-100 EA
01.10.2015	POitem 4500008728-10 Plant (Tools Germany South)	100 EA	
02.10.2015	POitem 4500008727-10 Plant (Tools Germany South)	300 EA	

Below the table, four solution proposals are listed:

- Accept**: Choose
- Change**: Plant P003 (Tools Germany South) - Choose
- Change**: Plant P003 (Tools Germany South) - Choose
- Procure**: Electronics Retail & Co. - Choose

Buffering in Manufacturing





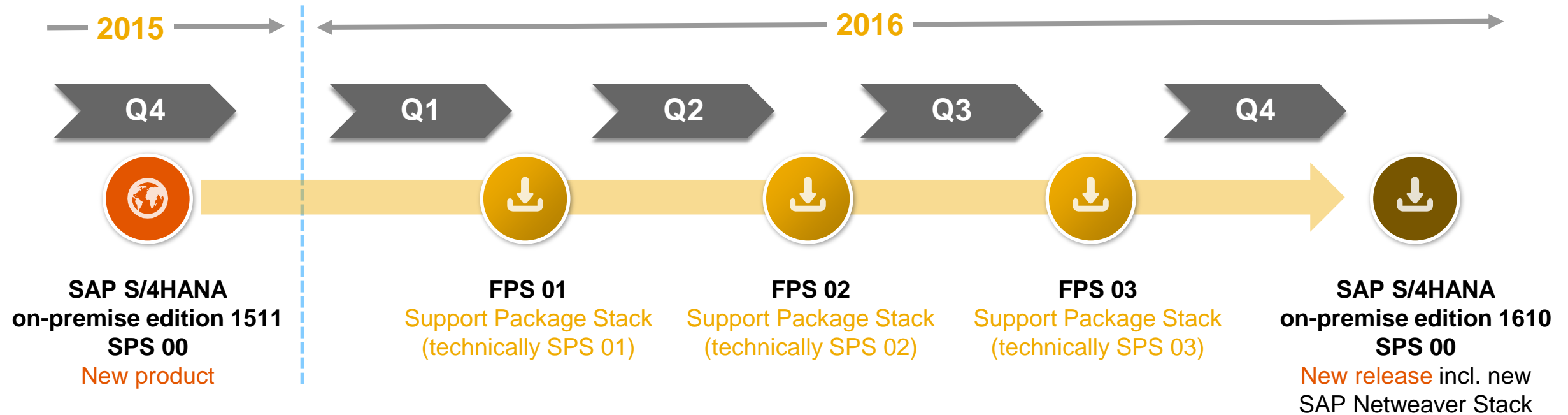
Introduction to SAP S/4HANA, on-premise edition 1511

Agenda

1. What is SAP S/4HANA, on-premise edition 1511?
2. Current Solution
3. Roadmap

SAP S/4HANA, on-premise edition

Release Strategy for 2016 and definition of delivery



Support Package Stack for SAP S/4HANA on-premise edition 1511

After general availability of SAP S/4HANA on-premise edition 1511, Support Package Stacks (SPS) contain stabilizations bundled with corrections and legal changes. Customers benefit from this functionality as part of their maintenance fee. First SPS of a new release can contain selected features and are labelled Feature Package Stack (FPS) accordingly.

Support Package Stacks are compiled periodically and made available in the [SAP Service Marketplace](#).

Important SAP Notes

[2189824 - SAP S/4HANA, on-premise edition 1511: Release Information Note](#)

[2214213 - SAP S/4HANA, on-premise edition 1511: Restriction Note](#)

SAP S/4HANA, on-premise edition 1511 FPS 02

Delta Scope

Key Message

Focus: Improve quality and remove restrictions of SAP S/4HANA, on-premise edition 1511

FIORI: 43 new or updated Fiori Apps

Application Fiori Apps

Finance [11]



- » Bank Risk
- » Deficit Cash Pool
- » Check Cash Flow Items
- » Cash Position Details
- » Manage Banks
- » Manage Automatic Payments
- » Revise Payment Proposals
- » Manage Checkbooks
- » Manage Outgoing Checks
- » FIN User Default Parameter Plugin
- » **Order to Cash:** Analyze Unrated Items

Logistic [4]



- » Create Excise Invoice
- » Display Excise Invoice
- » Manage NF-e/CT-e Contingency
- » Verify Nota Fiscal

Production Planning [10]



- » Monitor External Requirements
- » Monitor Material Coverage
- » Manage External Requirements
- » Manage Material Coverage
- » Monitor Internal Requirements
- » Monitor Production Orders or Process Orders
- » Manage Internal Requirements
- » Manage Production Orders or Process Orders
- » Manage Change Requests
- » MRP Cockpit Reuse Component

Cross Fiori Apps [9]

- » Configure the Consumption of Predictive Models
- » Core Configurator
- » Implementation Cockpit
- » Org structure
- » APF Configuration Modeler
- » Define Operational Customizing
- » Manage Data Aging Groups
- » Monitor Archiving Jobs



Industry - Higher Education [9]

- » Enter Grades
- » My Advisees
- » My Courses
- » My Results
- » My Timetable
- » Student Degree Requirements
- » Student File
- » Track My Degree Requirements
- » My Personal Details



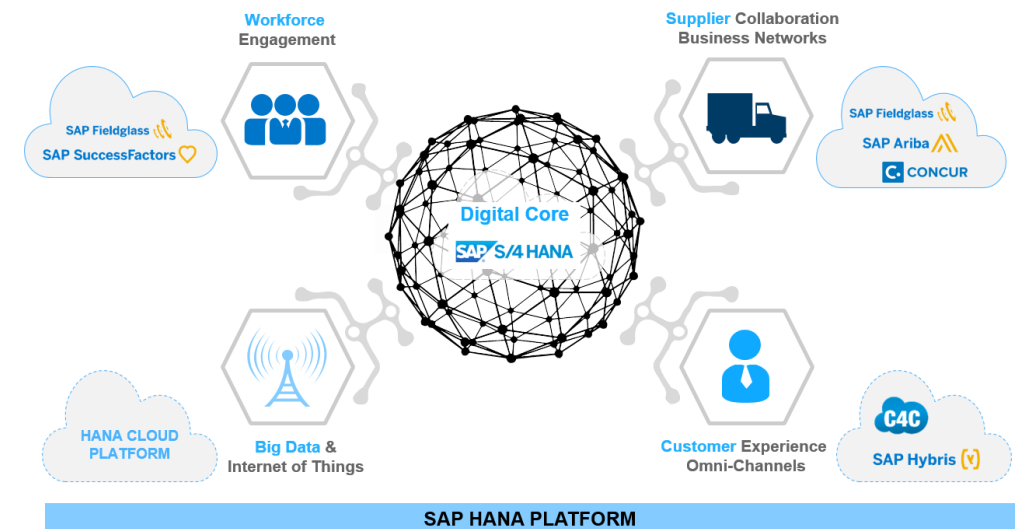
SAP S/4HANA, on-premise 1610

Release Motto

Mission: SAP S/4HANA is the Digital Core to support the Digital Transformation of our customers

How can we utilize the digital data for more insight and context recognition for more effective and efficient business processes

- » Consolidation of Cloud scope until 1608 into on premise 1610 shipment.
- » Continued DIMP, LAMA investments.
- » Analytics
 - All Interface and consumption CDS views has to be performance tests
 - Cube and dimension CDS views has to be released for customer usage
- » New Industries: IS-OIL, Retail & Fashion, Healthcare.
- » Dark shipment with SP00: CWM and IS-H
- » New country version for Egypt
- » New SET Content: Belgium, China, France, Philippines, Netherlands, Hungary, Singapore, Australia, Canada, UK + Country Fiori Apps.
- » Add-Ons (~170) in consideration for 1610: Add-ons 1610



Visual Harmonization

Strategy: Decision to set focus on user experience in SAP S/4HANA in 2016
Visual Harmonization will be switched on globally for SAP S/4HANA, on-premise 1610

Visual Harmonization Fiori-based visual design (theme, colors, styles, screen metrics) to ensure consistent Fiori Visual Design in affected legacy Uis along the pyramid.

Production order Display: Header

Menu

Order: 1000180 Type: PP01
Material: SCRM_P101 SCRM 101 Product Plant: 0001
Status: REL PRC DLFL MANC OPGN SETC

General Assignment Goods Receipt Control Dates/Qties Master Data Long Text Administration SAP Event Mgmt

Quantities

Total Qty: 10 PX Scrap Portion: 0 0,00 %
Delivered: 0 Short/Exc. Rcpt: 0

Dates/Times

	Basic Dates	Scheduled	Confirmed
End	14.06.2012 00:00	13.06.2012 00:00	
Start	11.06.2012 00:00	13.06.2012 00:00	00:00
Release		05.06.2012	11.06.2012

Scheduling

Type: Current date

Floats

Sched. Margin Key	001
Float Bef. Prdn	2 Workdays
Float After Prdn	1 Workdays
Release Period	5 Workdays



Production Order Display: Header

Order Header Component Overview Document Overview Sequence Overview XSteps Operations Viewer Order Function Header Go To Print Exit

Order: 1000180 Type: PP01
Material: SCRM_P101 SCRM 101 Product Plant: 0001
Status: REL PRC DLFL MANC OPGN SETC

GENERAL ASSIGNMENT GOODS RECEIPT CONTROL DATES/QTIES MASTER DATA LONG TEXT ADMINISTRATION SAP EVENT MGMT

Quantities

Total Qty: Marvel Enterprises EA Scrap Portion: 0 0,00 %
Delivered: 0 Short/Exc. Rcpt: 0
Read-Only: Tony Starck

Dates/Times

	Basic Dates	Scheduled	Confirmed
End	31.10.2015 09:30	29.10.2015 14:30	
Start	28.10.2015 09:30	29.10.2015 14:30	
Release		29.10.2015	

Example screen from transaction CO03 („Display Production Order“) in SAP GUI for HTML

VH-enabled (implementation in SAP GUI for HTML progressing)

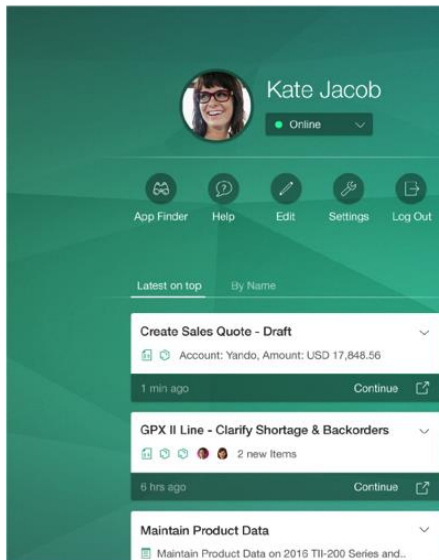
Fiori 2.0

SAP Fiori Design Evolution

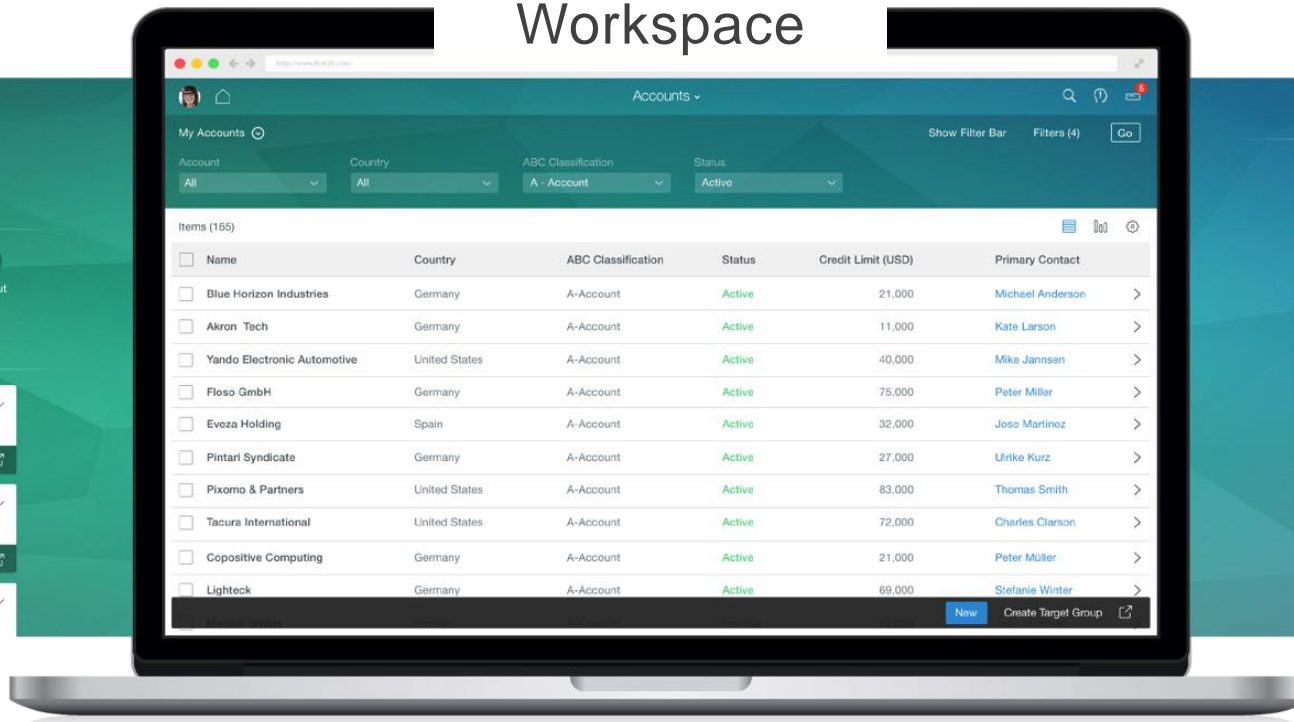
Fiori 2.0 is mandatory for SAP S/4HANA on-premise 1610 onwards – with common user experience

Application Adoption: Merged header with hierarchical navigation. Configuration of Notifications: which Workflows to show?
CoPilot: QuickCreate/QuickView, Navigation, Notes & Collaboration

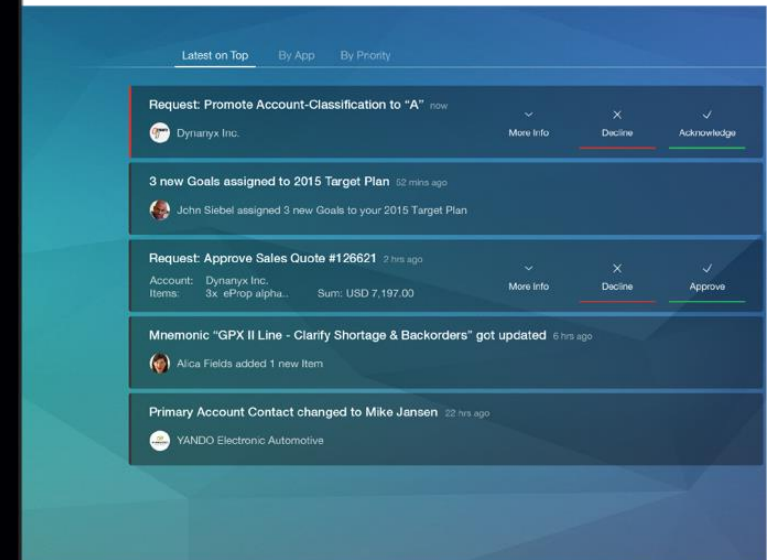
Me Area



Workspace



Notifications & CoPilot



Extended Warehouse Management

Plans to bring the full scope of the SAP Extended Warehouse Management (SAP EWM) application into SAP S/4HANA software, which will provide customers with flexible deployment options to run all kinds of warehouses within a single SAP solution

- Access business partner data within SAP S/4HANA instead of replicating business partners to a decentralized EWM system
- Use material and product data within SAP S/4HANA instead of replicating it to a decentralized EWM system
- Manage batch master data within SAP S/4HANA instead of replicating it to a decentralized EWM system
- Directly read purchase order data, process order data, and production order data instead of replicating those objects to a decentralized EWM system and storing them in an expected goods receipt (EGR) document
- Skip warehouse request objects and process only outbound delivery orders without using outbound-delivery requests; process only inbound deliveries without having inbound-delivery notifications; process only posting changes without using posting-change requests
- Maintain only one quality document instead of working with a quality inspection document and a QM inspection lot
- Eliminate the need to replicate accounting objects
- Directly read material values instead of making periodic replications for decentralized storage



SAP S/4HANA, on-premise 1610

EWM – Scope Description

Status: May 2016

Provide EWM in SAP S/4HANA to provide state of the art warehousing capabilities in SAP S/4HANA with simplified integration to SAP S/4HANA processes

SAP S/4HANA

Inventory and basic warehouse management

Recent innovations¹

Inventory Management

Process Innovations

- Real-time inventory management through redesigned data model in SAP S/4HANA
- Simplified material valuation to enable parallel inventory posting for standard price-driven materials

User Experience

- SAP Fiori apps for inventory managers
- SAP Fiori apps for warehouse clerks

Planned innovations

Inventory Management

Process Innovations

- Performance optimization for goods movements

User Experience

- Analytical SAP Fiori apps for inventory managers and inventory analysts
- New SAP Fiori apps for inventory managers and warehouse clerks for physical inventory
- Further SAP Fiori UX improvements for material documents

Future direction

Inventory Management

Process Innovations

- Catch-weight management integration into the core
- Simplified material valuation to enable parallel inventory posting for moving average price-driven materials

User Experience

- New SAP Fiori apps for inventory managers, warehouse clerks, and inventory analysts
- Further SAP Fiori UX improvements with an overview page for user roles in inventory management

SAP FIORI

2 Apps for Persona Lean Warehouse Clerk:
Inbound via delivery (F1706), Outbound for delivery (F1704)

SAP FIORI Launchpad Content for Non-FIORI:

Make main PFCG roles of classic EWM available in FLP in EWM in SAP S/4HANA

Business roles

New PCFG Roles for EWM in SAP S/4HANA (**EWM is new in S/4HANA, on-premise 1610**), but no new business role as WM was already existing in SAP S/4HANA

SET/Baseline content

N/A , no SET content for EWM in SAP S/4HANA, on-premise 1610 planned (only for future release)

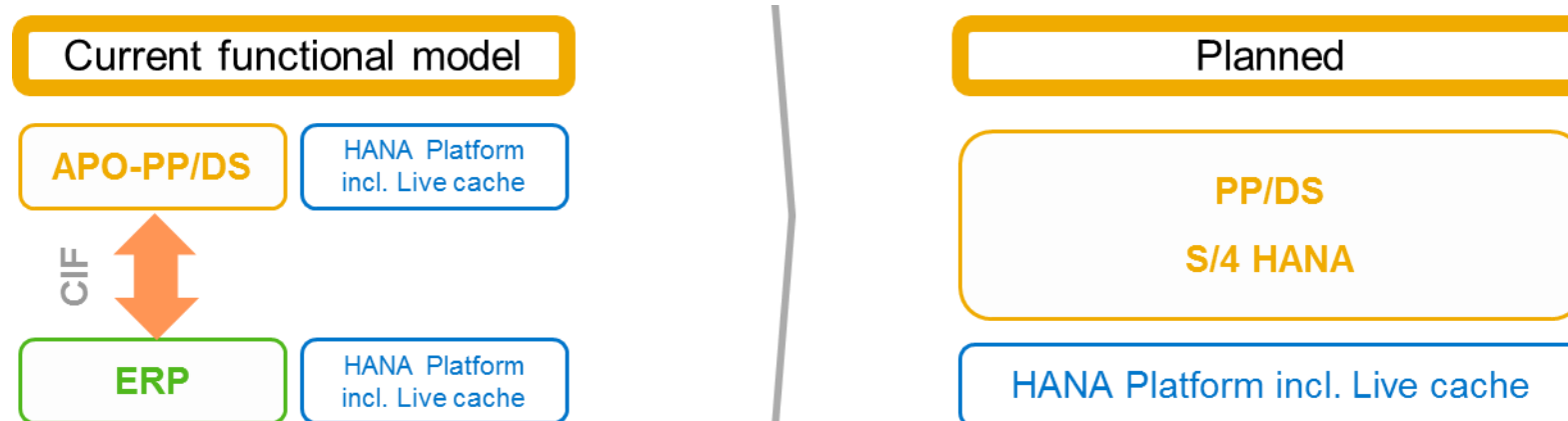
¹ Highlights for SAP S/4HANA 1511 FPS02: check [Feature Scope Description](#) for full scope

Embedded Finite Production Scheduling

Capability Change

Status: May 2016

UI Harmonization, CIF Simplification, Master Data Harmonization, Analytics



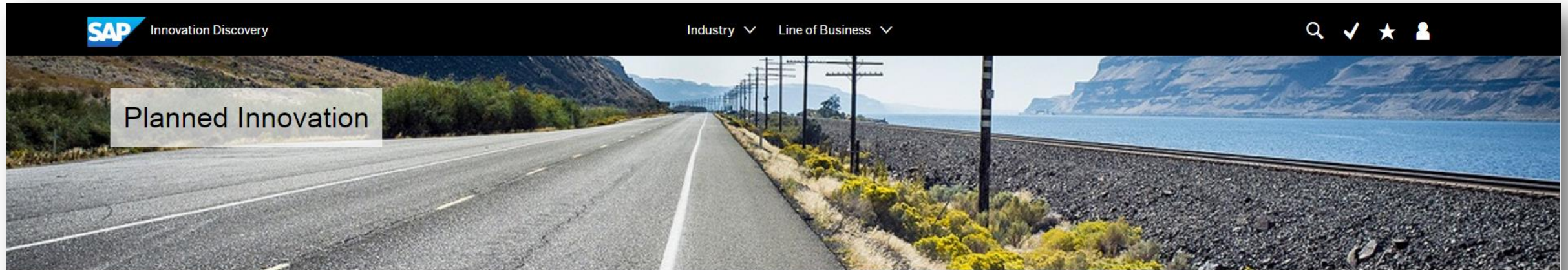
Unique Value of S/4HANA

TCO reduction:

- PPDS functionality gets co-deployed with ERP on the same system utilizing one HANA database instance
- Integration for material master and work center resource not needed

Constraint based planning, using various heuristics and optimizers by bringing PP/DS on ERP, reducing integration efforts and allowing seamless master data & UI harmonization

*Planned Innovation for 1610 release



SAP Innovation Discovery

Industry ▾ Line of Business ▾



Planned Innovation



Manufacturing planning: Simplified production planning (PP) and detailed scheduling (DS) in SAP S/4HANA

- Access production planning and detailed scheduling as part of the manufacturing planning functionalities in SAP S/4HANA
- Create procurement proposals for in-house production or external procurement to cover product requirements
- Optimize and plan the resource schedule and the order dates and times in detail by taking the resource and component availability into account
- Plan critical products, such as products with long replenishment lead times or products that are produced with bottleneck resources
- Create executable production plans

Explore Digital Scenarios

- [Chemicals: Digitized Order to Delivery](#)

service.sap.com/Roadmap

Road Map for On Premise



Customer

Product engineering and planning/production operations and execution

► Future direction

Production planning and production execution

- SAP Fiori apps for material requirements cockpit)
 - Individual planning segments

© 2016 SAP SE or an SAP affiliate company. All rights reserved.

This presentation and SAP's strategy and possible future developments are provided without a warranty of any kind, either express or implied, including

Inventory and basic warehouse management

► Future direction

Inventory Management

Process Innovations

- Catch-weight management integration into the core
 - Simplified material valuation to enable parallel inventory posting for moving average price-driven materials
- User Experience*
- New SAP Fiori apps for inventory managers, warehouse clerks, and inventory analysts
 - Further SAP Fiori UX improvements with an overview page for user roles in inventory management

© 2016 SAP SE or an SAP affiliate company. All rights reserved.

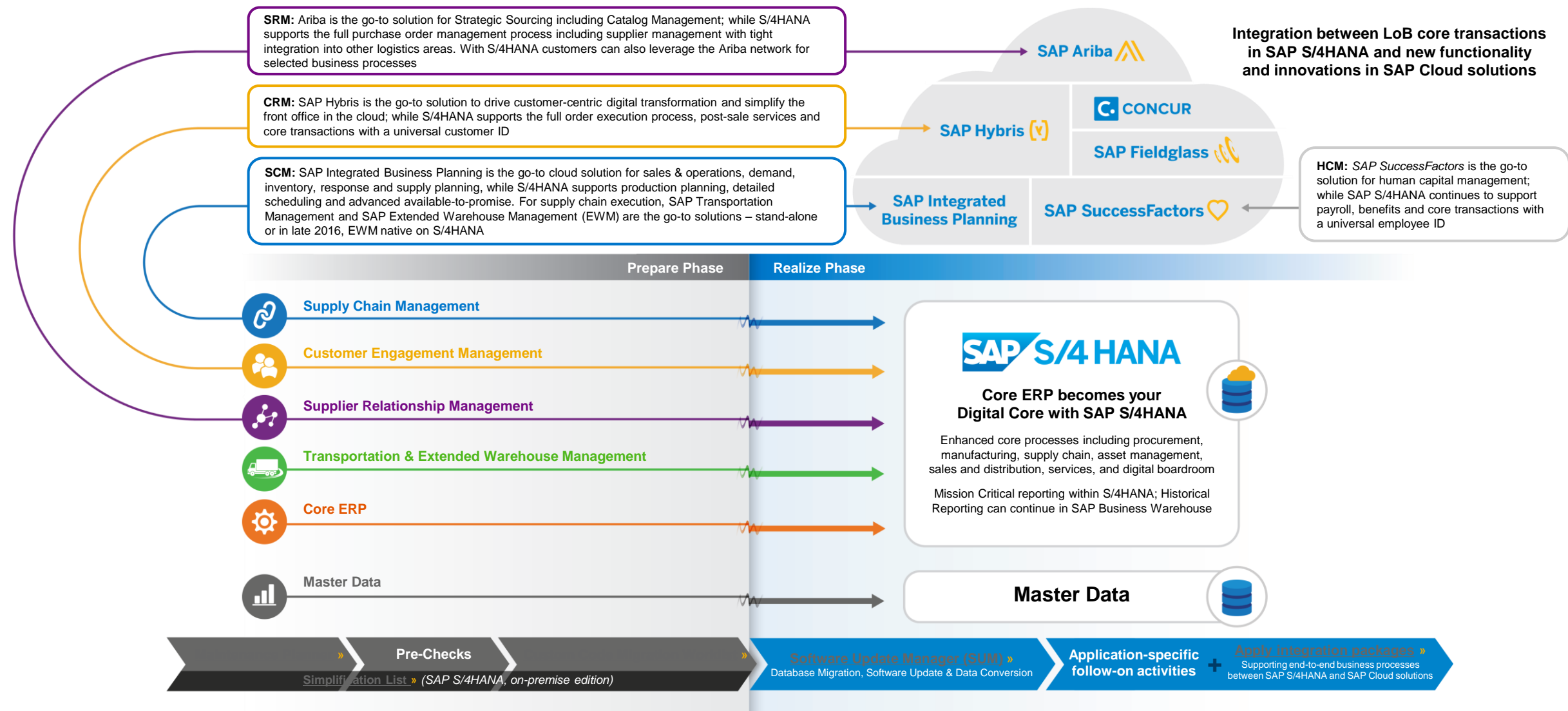
This presentation and SAP's strategy and possible future developments are subject to change and may be changed by SAP at any time for any reason without notice. This document is provided without a warranty of any kind, either express or implied, including but not limited to, the implied warranties of merchantability, fitness for a particular purpose, or non-infringement.

Customer

1

Current State Landscape and Evolution

What's In, What's Out?



SAP S/4 HANA Roadmap and Future Scope

For more detailed information including roadmap and future scope:



Cloud specific SAP S/4HANA Roadmap *(customer log-in required to access)*
sap.com/s4roadmap-cloud



On-premise specific SAP S/4HANA Roadmap *(customer log-in required to access)*
sap.com/s4roadmap-onprem



Industry specific roadmaps *(customer log-in required to access)*
sap.com/industry-roadmaps



Innovation Discovery *(Innovations and features that you can turn into tangible value for your business)*
sap.com/S4-discovery



Additional information on SAP S/4HANA integrations
sap.com/S4-integration

Road Maps for Influencing and Adoption

How customers get info on SAP Products and Solutions

Business View

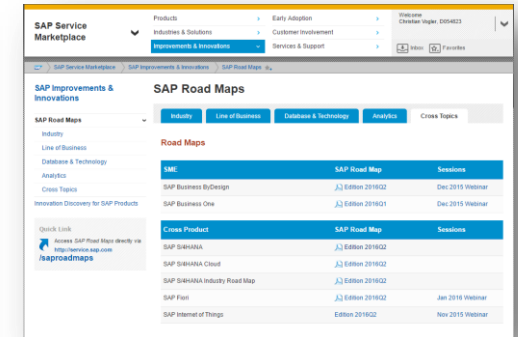
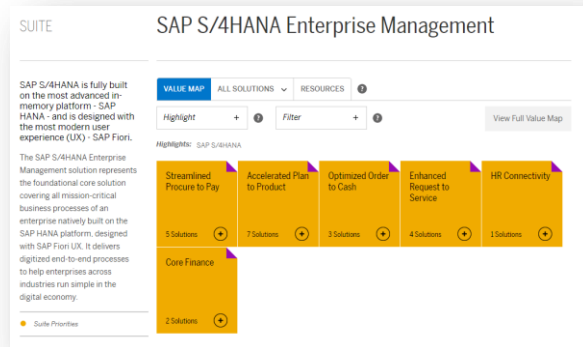
Functional View

Value Maps / Solution Explorer

Solution Road Maps

Innovation Discovery

Product Road Maps



Industry / Line of Business
View
for Customers and Prospects

Solution / Portfolio
View for Customers
for Customers and Prospects

Online Innovation/
Feature View
for Customers

Product
View
for Customers

I want to understand for which **business areas and business processes** SAP offers solutions

I want to understand the specific **value proposition** for a solution and the **future direction** in terms of the **business processes** supported

I want to see the **innovations** and the related **features** for delivered and planned releases

I want to see the **feature level plans** for a product

Where to go for information?

Discover SAP S/4HANA



SCN Community



Top Questions and Answers



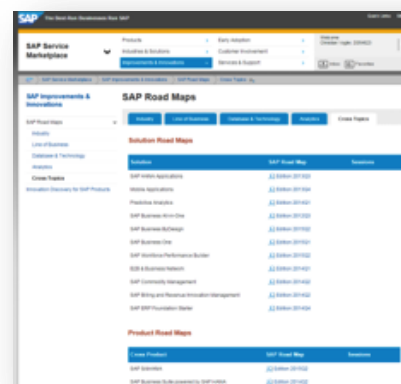
How to get there ... S/4HANA Cookbook



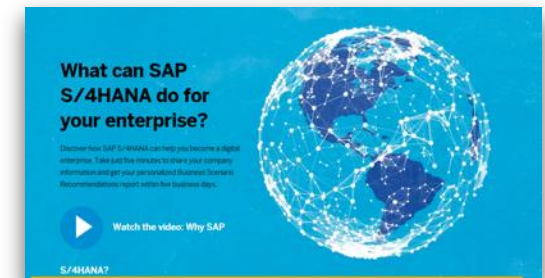
SAP S/4HANA, on-premise edition trial



Further content with more detailed roadmap on SAP Service Marketplace



Business Scenario Recommendations



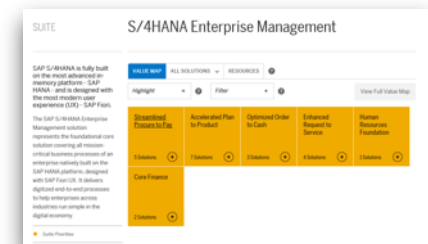
Innovation Discovery



SAP S/4HANA, cloud edition trial



Solution Explorer



QUESTIONS ?



Thank you!



Christian Vogler
Senior Product Specialist
SAP S/4HANA Product Management

SAP SE
Dietmar-Hopp-Allee 16
69190 Walldorf, Germany

Christian.vogler@sap.com

© 2016 SAP SE or an SAP affiliate company. All rights reserved.

No part of this publication may be reproduced or transmitted in any form or for any purpose without the express permission of SAP SE or an SAP affiliate company.

SAP and other SAP products and services mentioned herein as well as their respective logos are trademarks or registered trademarks of SAP SE (or an SAP affiliate company) in Germany and other countries. Please see <http://global12.sap.com/corporate-en/legal/copyright/index.epx> for additional trademark information and notices.

Some software products marketed by SAP SE and its distributors contain proprietary software components of other software vendors.

National product specifications may vary.

These materials are provided by SAP SE or an SAP affiliate company for informational purposes only, without representation or warranty of any kind, and SAP SE or its affiliated companies shall not be liable for errors or omissions with respect to the materials. The only warranties for SAP SE or SAP affiliate company products and services are those that are set forth in the express warranty statements accompanying such products and services, if any. Nothing herein should be construed as constituting an additional warranty.

In particular, SAP SE or its affiliated companies have no obligation to pursue any course of business outlined in this document or any related presentation, or to develop or release any functionality mentioned therein. This document, or any related presentation, and SAP SE's or its affiliated companies' strategy and possible future developments, products, and/or platform directions and functionality are all subject to change and may be changed by SAP SE or its affiliated companies at any time for any reason without notice. The information in this document is not a commitment, promise, or legal obligation to deliver any material, code, or functionality. All forward-looking statements are subject to various risks and uncertainties that could cause actual results to differ materially from expectations. Readers are cautioned not to place undue reliance on these forward-looking statements, which speak only as of their dates, and they should not be relied upon in making purchasing decisions.