

Connected Products

Your Digital Product Innovation Platform

Frank Spiegel, SAP

June 2016

Legal disclaimer

The information in this presentation is confidential and proprietary to SAP and may not be disclosed without the permission of SAP. This presentation is not subject to your license agreement or any other service or subscription agreement with SAP. SAP has no obligation to pursue any course of business outlined in this document or any related presentation, or to develop or release any functionality mentioned therein. This document, or any related presentation and SAP's strategy and possible future developments, products and or platforms directions and functionality are all subject to change and may be changed by SAP at any time for any reason without notice. The information in this document is not a commitment, promise or legal obligation to deliver any material, code or functionality. This document is provided without a warranty of any kind, either express or implied, including but not limited to, the implied warranties of merchantability, fitness for a particular purpose, or non-infringement. This document is for informational purposes and may not be incorporated into a contract. SAP assumes no responsibility for errors or omissions in this document, except if such damages were caused by SAP's willful misconduct or gross negligence.

All forward-looking statements are subject to various risks and uncertainties that could cause actual results to differ materially from expectations. Readers are cautioned not to place undue reliance on these forward-looking statements, which speak only as of their dates, and they should not be relied upon in making purchasing decisions.

About SAP Road Maps

SAP road maps cover innovations that focus on business solutions and processes. They span products that are relevant for customer lines of business in their industries and explain how our innovations can add value to your business.

In SAP road maps, you can learn about our innovations along three different timelines:

1. **Recent innovations** for our solutions have been launched in the past weeks or months and can already be purchased.
2. **Planned innovations** for our solutions are expected to be launched in the short term or midterm.
3. **Future direction** provides a long-term perspective on high-level development plans on innovations for our solutions – inspired by your requirements.

Individualization



Interesting Facts: BMW

11 models...

...36 body types, 36 engine types...

...and nearly unlimited options

Flexible **CONFIGURATION** enables tailored products for markets of one or many

Digital Accelerator: extend the digital design process to customers

Speed of Innovation



Interesting Facts: Nestle

~10,000 product projects at once...

...over 60,000 projects per year...

...in 32 R&D centers in 13 countries

Global and local **ORCHESTRATION** drives profit from new products

Digital Accelerator: big data technology to integrate people, processes and products

Smarter Products



Interesting Facts: Tennant

Cleaning solutions for a safer, healthier world...

...with IOT enabled machines

...that track usage, location, water, costs and alerts

Systems Thinking delivers improved product performance with cross-domain SYNCHRONIZATION

Digital Accelerator: design for and by the Internet of Things

Stewardship Demands



Interesting Facts: Walmart

Focus on products that sustain people and the environment

Onboarded >1,400 suppliers in 6 weeks

...across 700 product categories

Ensure business continuity with
COMPLIANCE

Digital Accelerator: business networks accelerate product and compliance intelligence

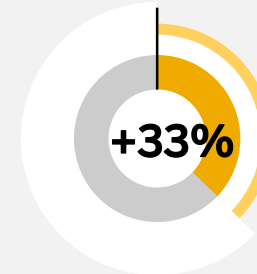
Cross Functional Teamwork



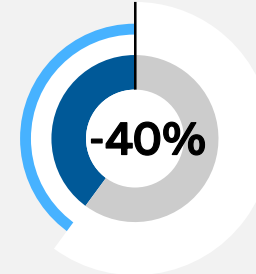
Interesting Facts: CNR Tangshan Railway

Needed a single, cross-department platform for design, manufacturing and maintenance

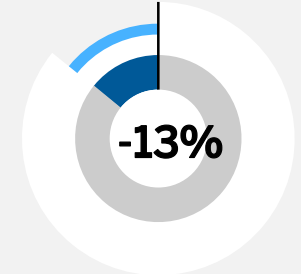
Cross-department collaboration on a single system



Faster R&D



Engineering Changes

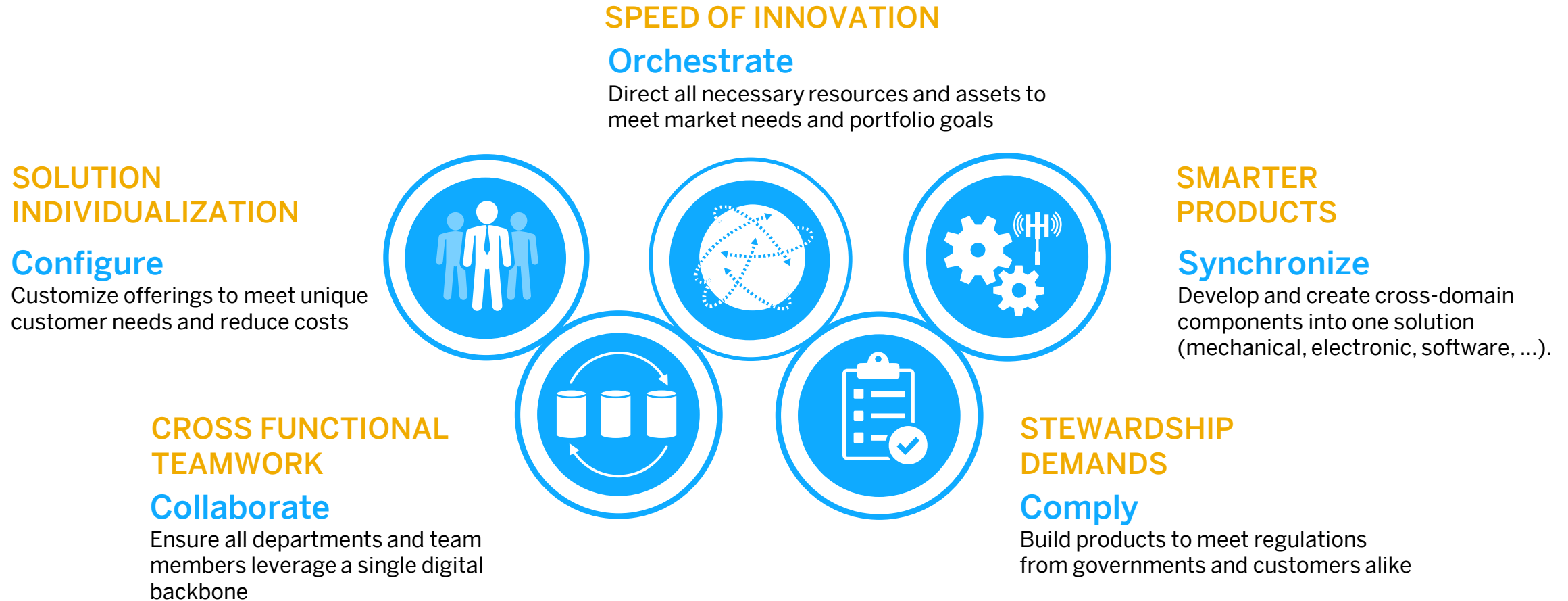


Costs

Leverage a common core for xBOM Management to enable **COLLABORATION**

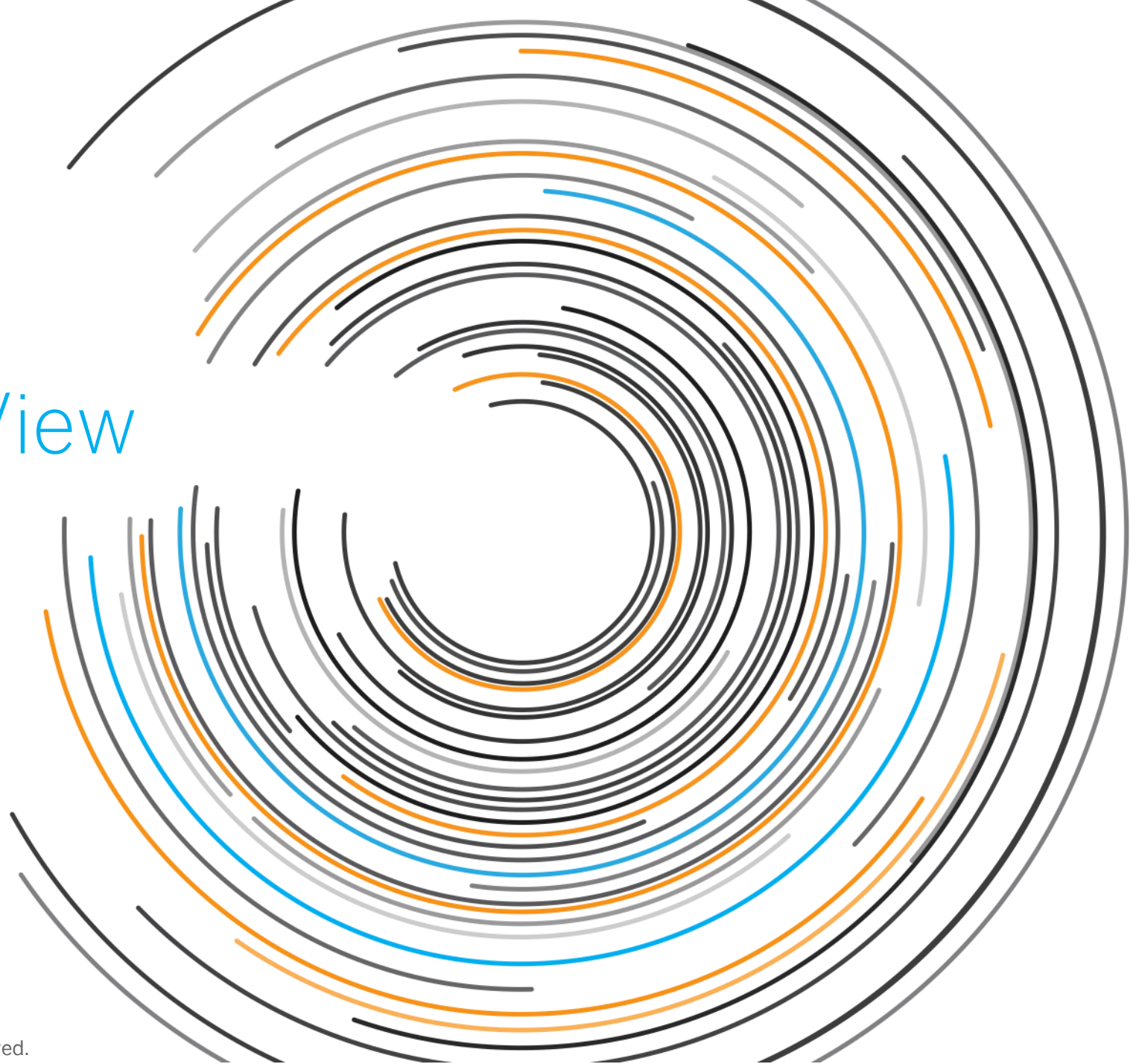
Digital Accelerator: enable all aspects of your enterprise to work with the digital product

Success Strategies for a Digital Economy



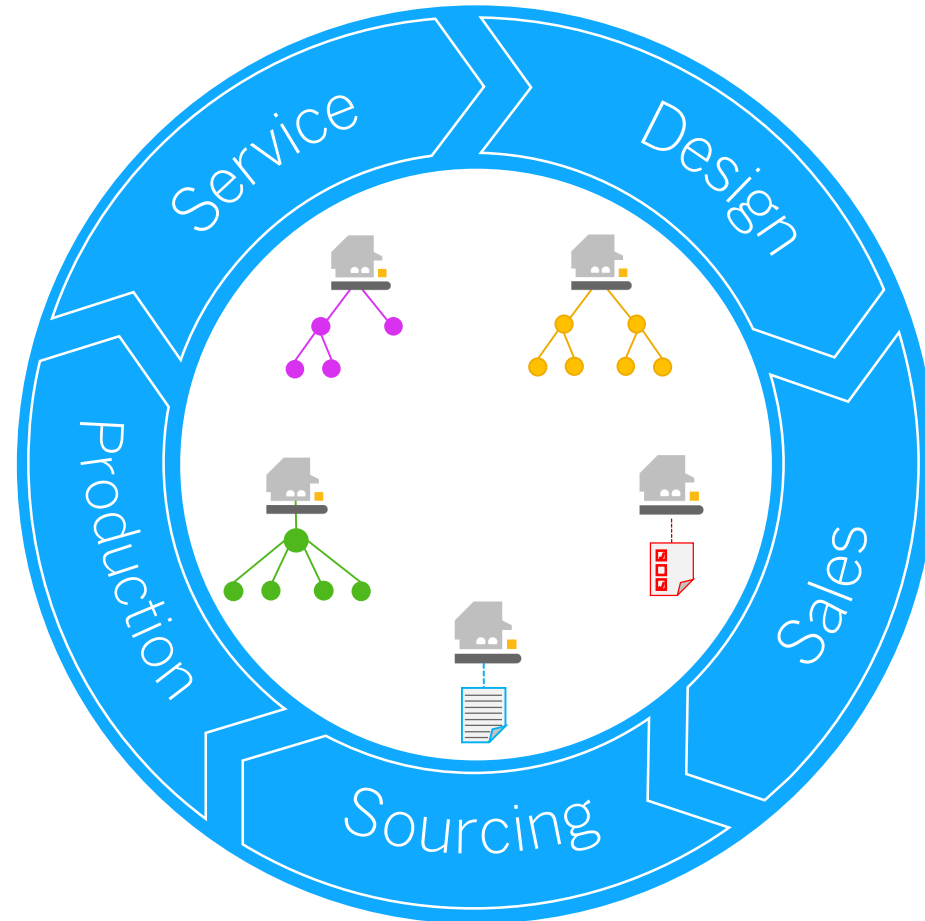
Sources: The Chief Supply Chain Officer, Forbes, NERA Economic Consulting, Cisco, HBR

SAP Point of View



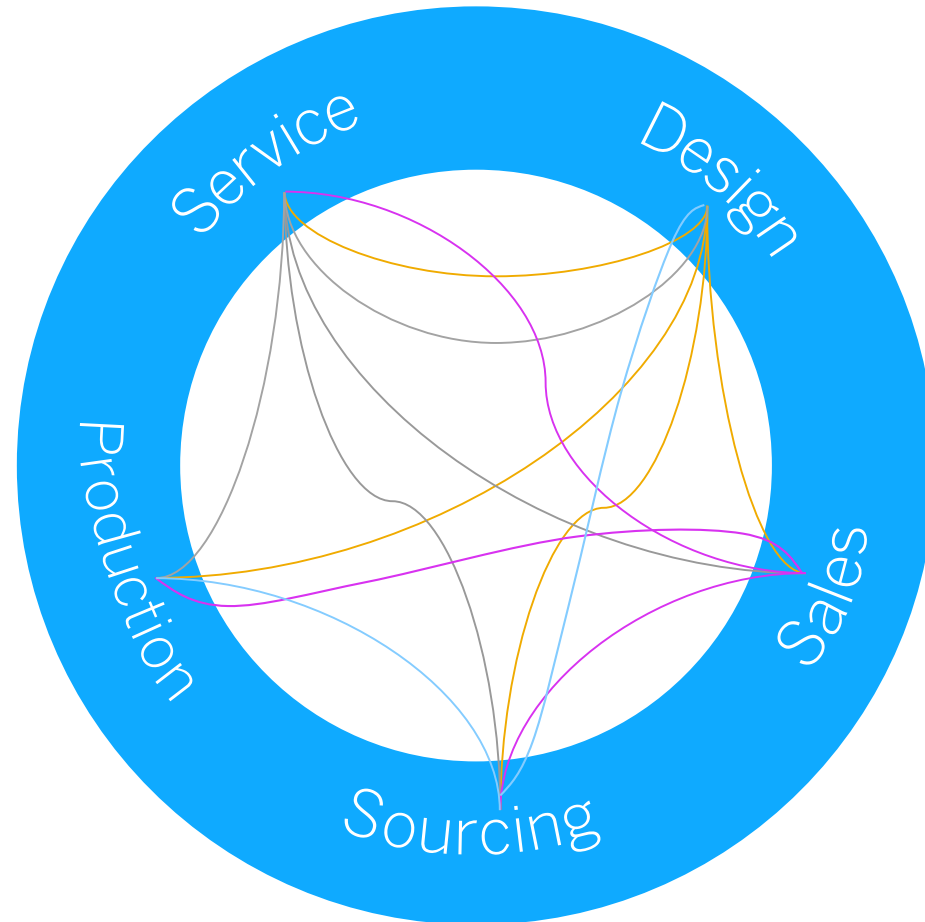
Ready for the Digital Transformation?

Disconnected Value Chains and Multiple Solution Models



SAP Point of View

From Sequential Steps to Collaborative Networks



SAP Point of View

Seamless Collaboration on One Common Solution Model

As-built/As-maintained BOM

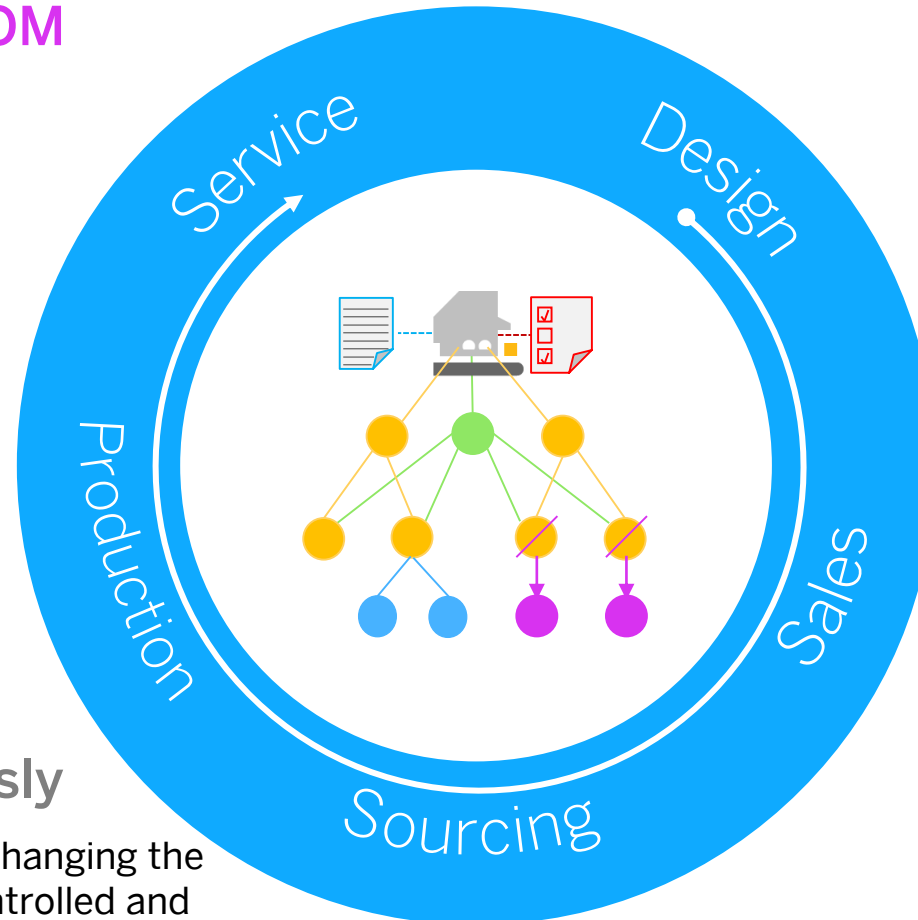
Engineering BOM

Manufacturing BOM

Sales Configurator

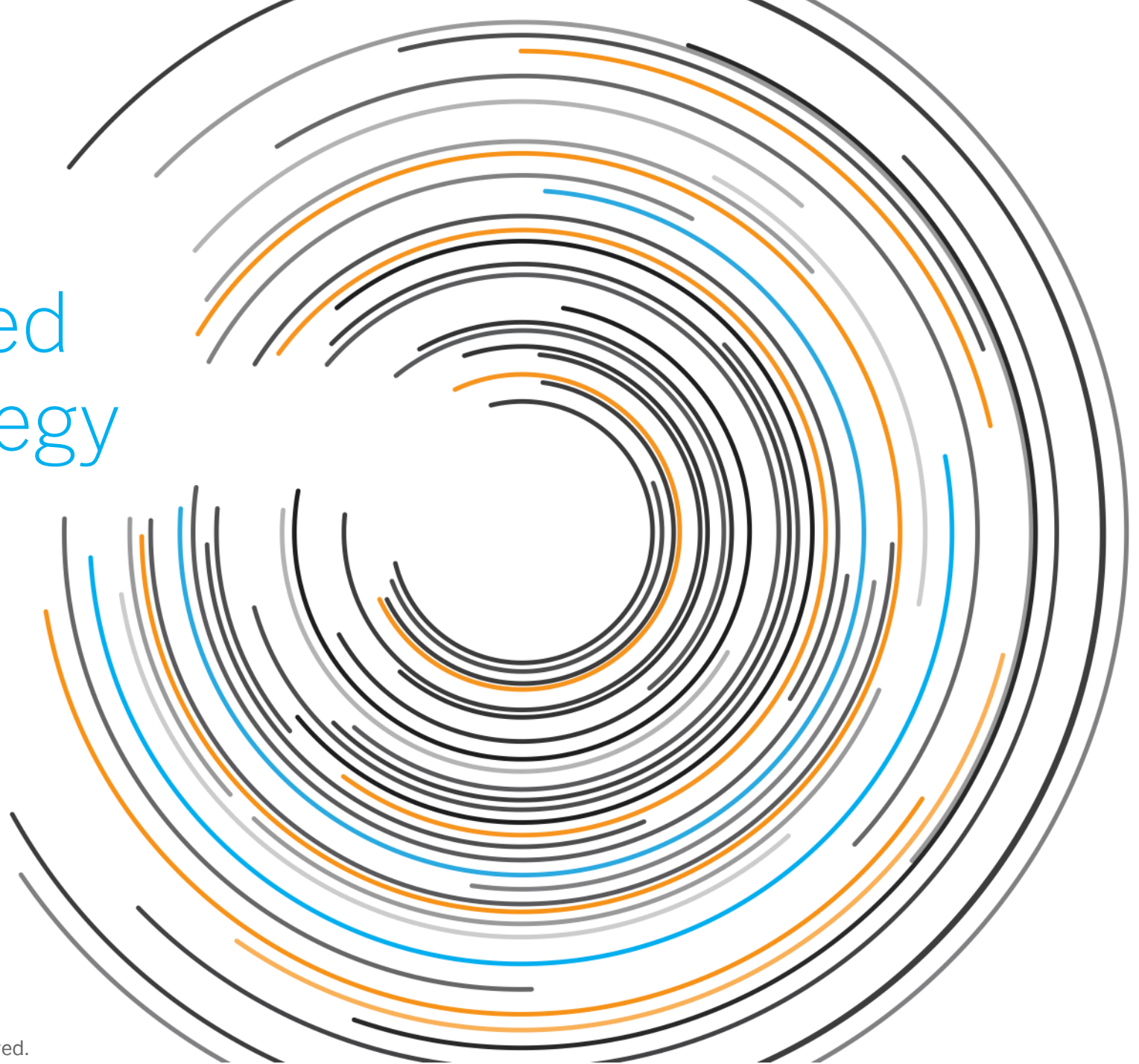
Working together seamlessly

All aspects of creating, managing and changing the solution model have to be done in a controlled and collaborative way. No strict serialization of process.



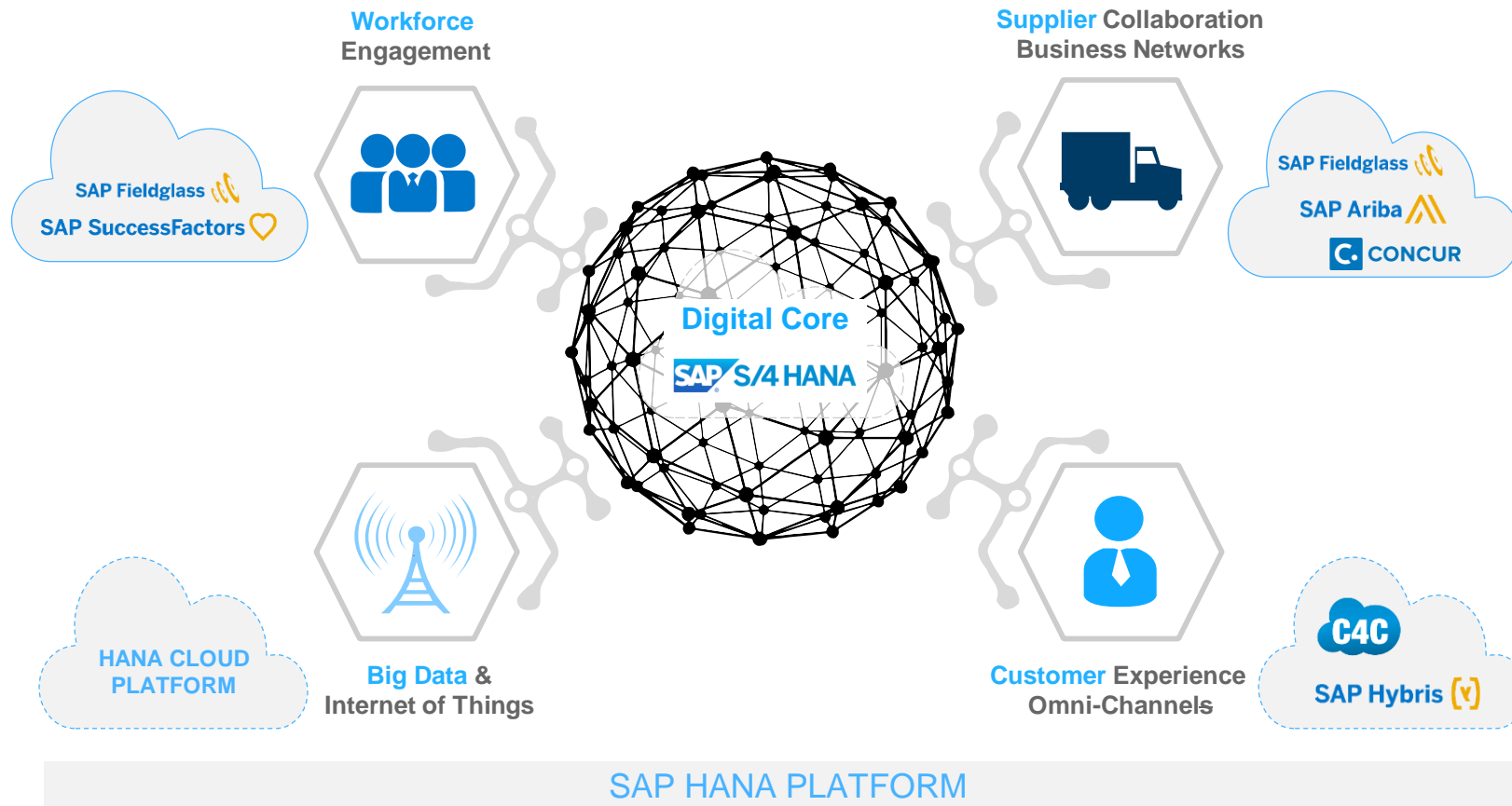
Purchased parts list

SAP Connected Product Strategy



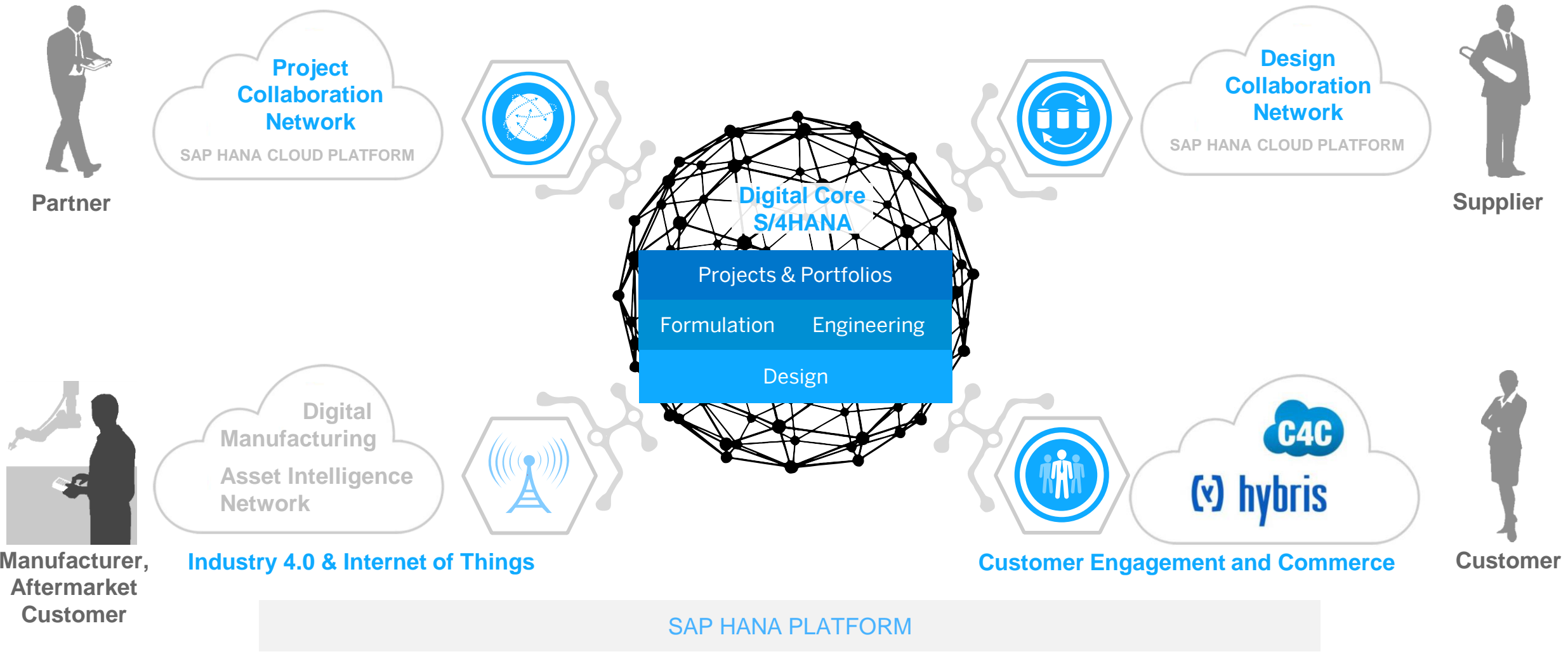
SAP Framework for Digital Business

Adapting to the digital economy requires a simple and powerful strategy framework



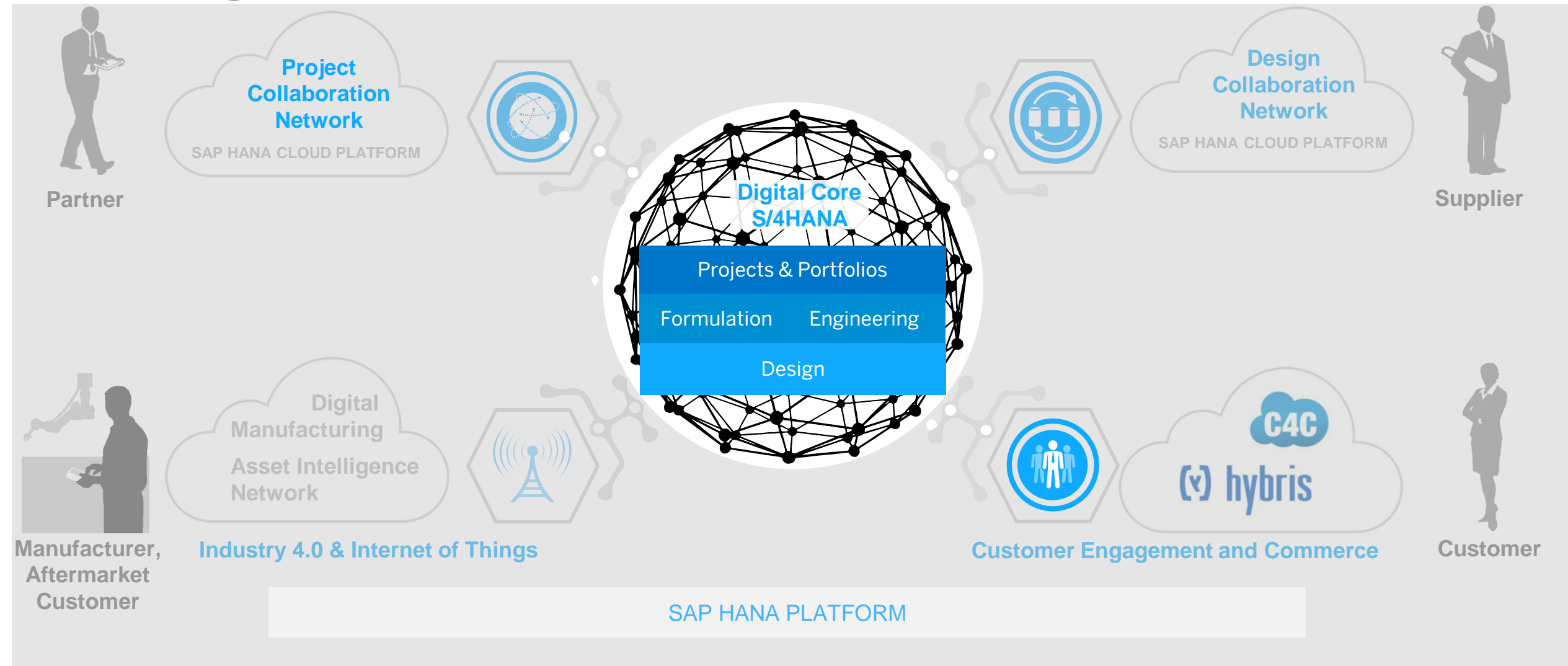
SAP Connected Products

The Digital Product Innovation Platform



SAP Connected Products

The Digital Product Innovation Platform



Future

SAP Connected Products

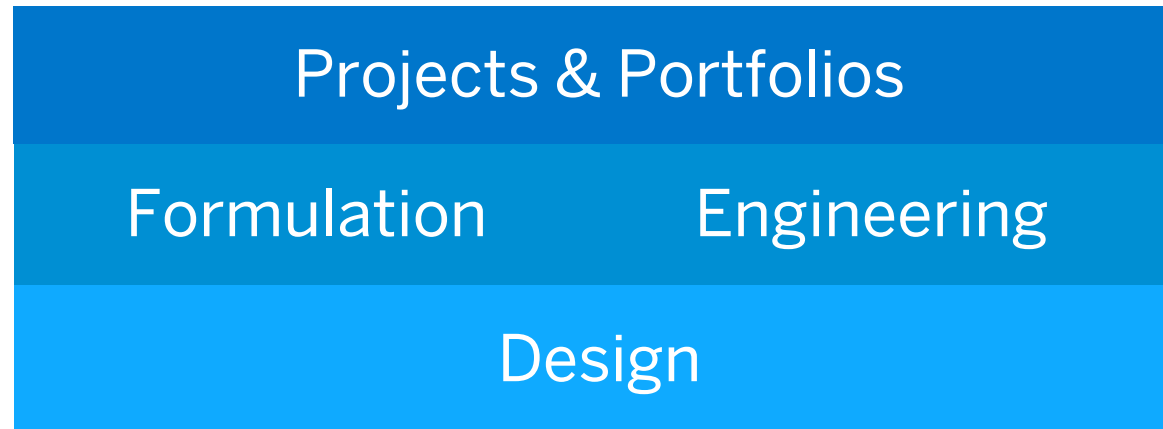
Your Digital Product Innovation Platform

COLLABORATE

Enterprise Product Formulation
Enterprise Product Engineering
Visual Enterprise

ORCHESTRATE

Portfolio and Project Management
Commercial Project Management
Innovation Management



CONFIGURE

Configure, Price, Quote
Variant Configuration
Product Lifecycle Costing

COMPLY

Product Stewardship Network
Cloud for Product Stewardship
Product Safety

SYNCHRONIZE

Engineering Control Center
MCAD
ECAD

SAP Connected Products

Operate at the Speed of Innovation

Projects & Portfolios

Formulation

Engineering

Design

Projects & Portfolios

Capture Ideas



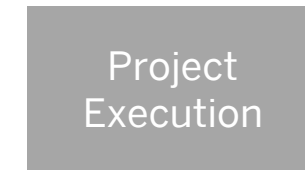
Innovation
Management

Orchestrate Business



Portfolio and Resource
Optimization

Deliver Results



Project
Execution

Increase profit from new products

SAP Connected Products

Enabling Product Individualization

Projects & Portfolios

Formulation

Engineering

Design

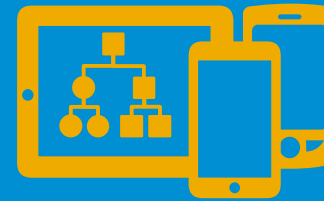
Formulation



Specification (Ingredient/Product Packaging)
Routing (Operations, Material, Documentation)
...

Recipe
Development

Engineering



Concept BOM
Design BOM
Variant BOM
Electronic BOM
Software Simulation BOM
...

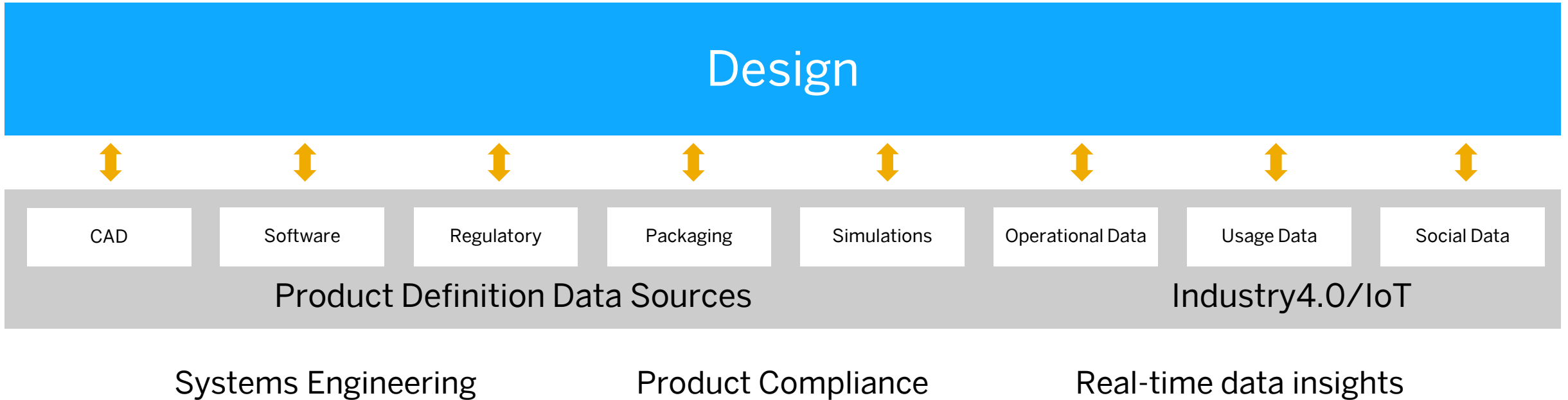
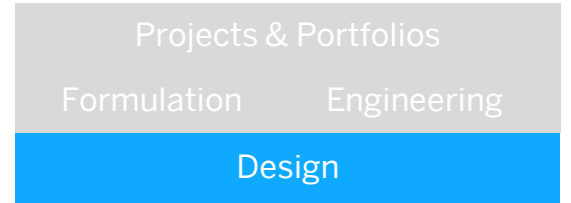
Variant
Configuration

Multi-BOM
Management

Deliver market expansion

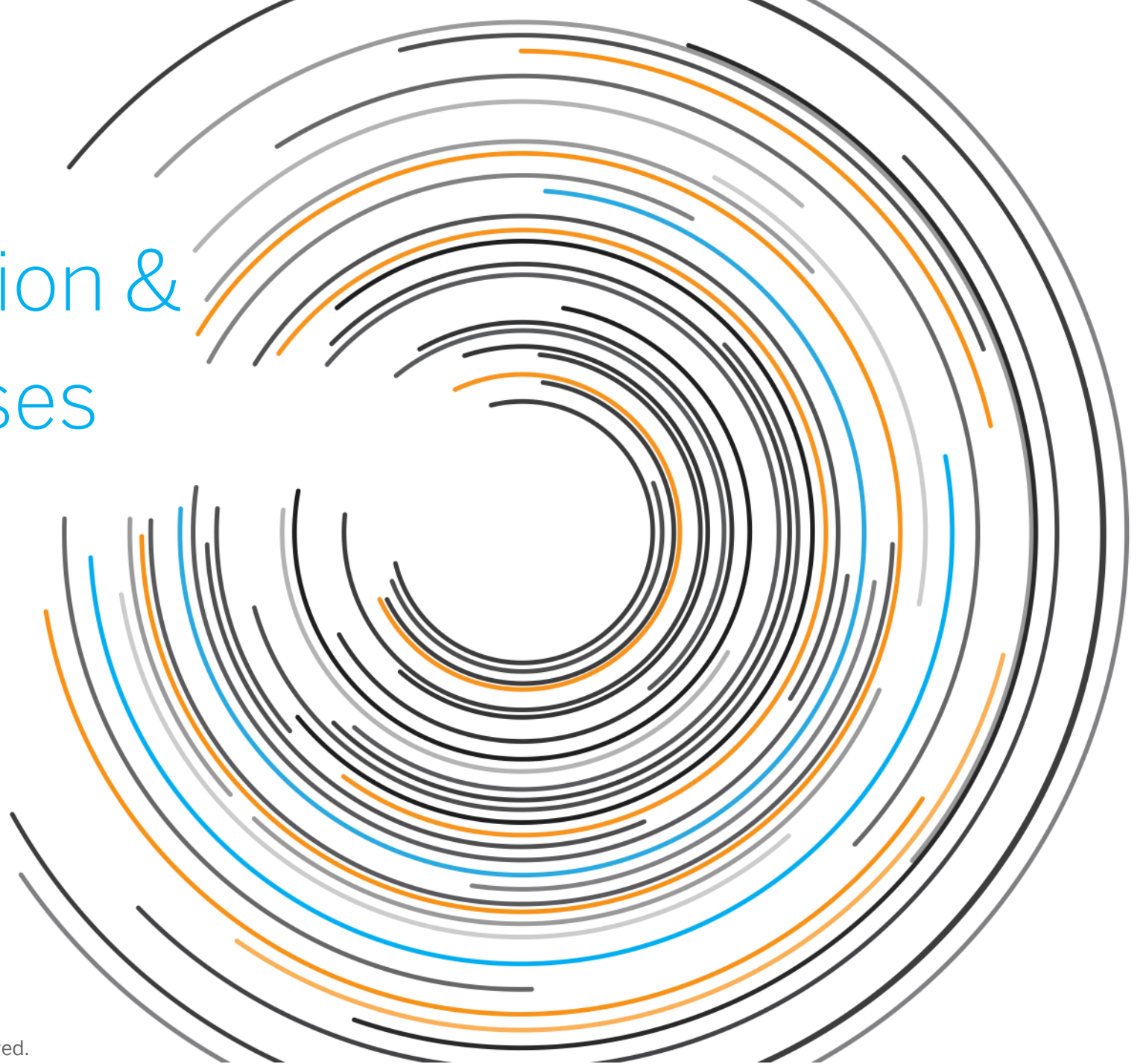
SAP Connected Products

Create Smarter Products



Design product performance

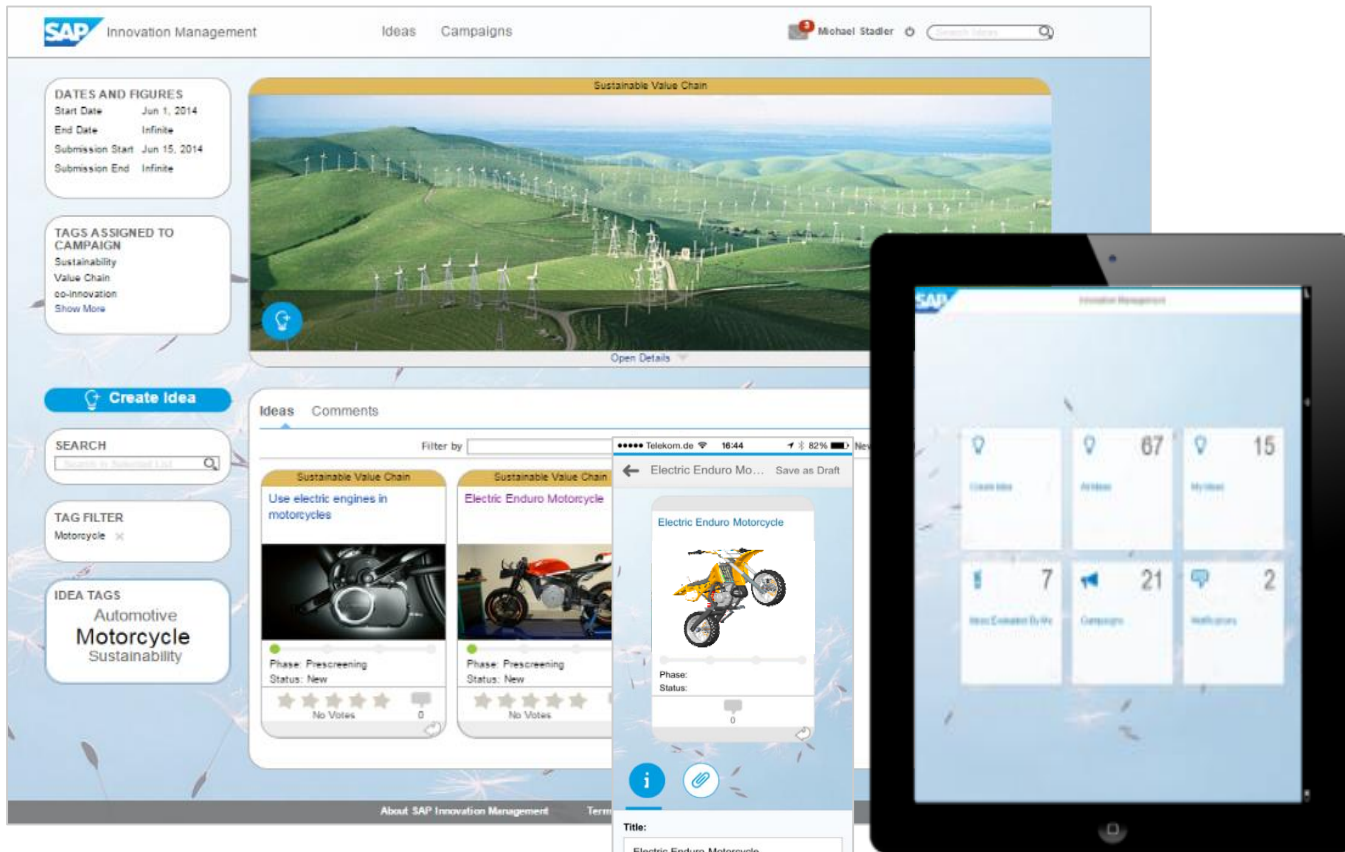
Today's Solution & Recent Releases



Orchestrate

SAP Innovation Management

User Experience



Capabilities

Manage your ideas

Idea submission

Collaboration/social media

Integration with social app

Community management

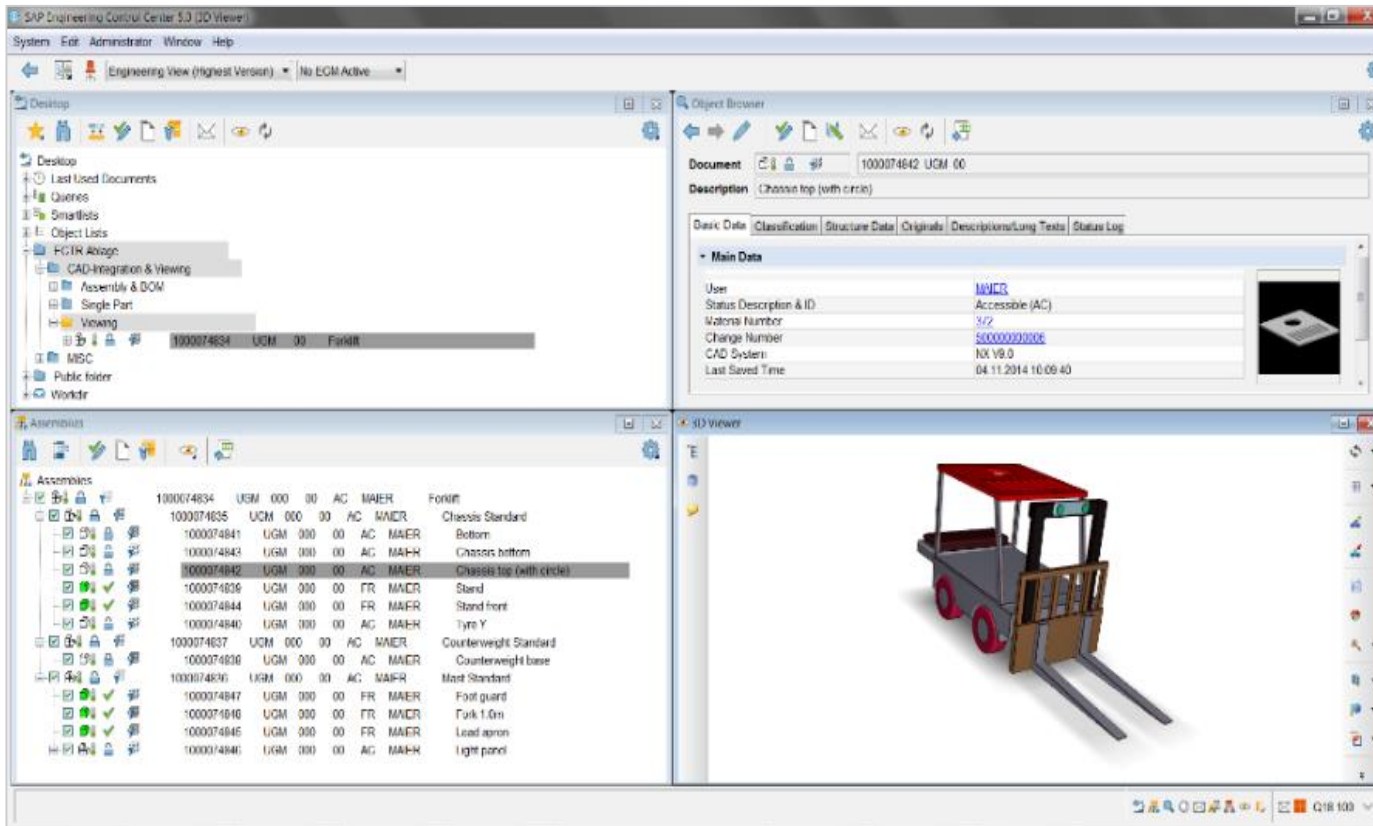
Progress tracking, prioritization

Customer Examples



Synchronize SAP Engineering Control Center

User Experience



Capabilities

Engineers single UI

Multi CAD connection to ERP

Central access point to all product data

Integration authoring platform

Interlink between design and production

Central platform systems engineering and mechatronics

Customer Examples



Configure SAP Product Lifecycle Costing

User Experience

The screenshot displays the SAP Product Lifecycle Costing interface. The main table lists various components and their associated costs. The right-hand pane shows key figures and item details for the selected component.

| Structure | Quantity for one... | Quantity for one... | Total Quantity | Total Quantity | Total Cost | Reporting Currency | Price/Rate (Fixed) | Price/Rate (Variable) | Price/Rate | Transaction Currency | Price Unit/Ra... |
|--|---------------------|---------------------|----------------|----------------|------------|--------------------|--------------------|-----------------------|------------|----------------------|------------------|
| SAP Example: Pump P-100 SAP Example: Version 1.0 | | | 100.00 | PC | 47,307.96 | USD | 40,094.80 | 7,213.16 | 47,307.96 | USD | 10 |
| 4230 1422 Provision according to Picking (Setup) | 0 | MIN | 0.00 | MIN | 0.00 | USD | 2,772.36 | 0.00 | 2,772.36 | USD | 10 |
| 4230 1420 Provision according to Picking (Machine) | 0 | MIN | 0.00 | MIN | 0.00 | USD | 2,246.88 | 415.66 | 2,662.54 | USD | 10 |
| 4230 1421 Provision according to Picking (Labor) | 10 | MIN | 1,000.00 | MIN | 567.73 | USD | 2,590.96 | 371.11 | 2,962.07 | USD | 10 |
| 1000 100-100 Casings | 1 | PC | 100.00 | PC | 14,383.21 | USD | 9,941.13 | 4,442.08 | 14,383.21 | USD | 10 |
| 4220 1422 Turning casing according to the draw | 10 | MIN | 10.00 | MIN | 64.36 | USD | 3,357.74 | 0.00 | 3,357.74 | USD | 10 |
| 4220 1420 Turning casing according to the draw | 30 | MIN | 3,000.00 | MIN | 3,927.40 | USD | 6,253.88 | 576.38 | 6,830.26 | USD | 10 |
| 4220 1421 Turning casing according to the draw | 30 | MIN | 3,000.00 | MIN | 3,053.62 | USD | 4,861.03 | 449.62 | 5,310.65 | USD | 10 |
| 1000 100-110 Slug for spiral casing | 1 | PC | 100.00 | PC | 562.10 | USD | 0.00 | 5.11 | 5.11 | USD | 10 |
| 4220 1422 Drilling holes (Setup) | 3 | MIN | 3.00 | MIN | 19.31 | USD | 3,357.74 | 0.00 | 3,357.74 | USD | 10 |
| 4220 1420 Drilling holes (Machine) | 10 | MIN | 1,000.00 | MIN | 1,309.13 | USD | 6,253.88 | 576.38 | 6,830.26 | USD | 10 |
| 4220 1421 Drilling holes (Labor) | 10 | MIN | 1,000.00 | MIN | 1,017.87 | USD | 4,861.03 | 449.62 | 5,310.65 | USD | 10 |
| 4210 1422 Inserting flat gasket (Setup) | 0 | MIN | 0.00 | MIN | 0.00 | USD | 1,446.13 | 0.00 | 1,446.13 | USD | 10 |
| 4210 1420 Inserting flat gasket (Machine) | 0 | MIN | 0.00 | MIN | 0.00 | USD | 1,633.55 | 367.44 | 2,000.99 | USD | 10 |
| 4210 1421 Inserting flat gasket (Labor) | 5 | MIN | 500.00 | MIN | 430.40 | USD | 3,777.51 | 713.67 | 4,491.18 | USD | 10 |
| 1000 100-120 Flat gasket | 1 | PC | 100.00 | PC | 2,378.20 | USD | 0.00 | 23.00 | 23.00 | EUR | |
| 1000 100-130 Hexagon head screw M10 | 8 | PC | 800.00 | PC | 440.00 | USD | 0.00 | 0.50 | 0.50 | USD | |
| 4210 1422 Inspection and delivery to storage (Se | 0 | MIN | 0.00 | MIN | 0.00 | USD | 1,446.13 | 0.00 | 1,446.13 | USD | 10 |
| 4210 1420 Inspection and delivery to storage (M | 0 | MIN | 0.00 | MIN | 0.00 | USD | 1,633.55 | 367.44 | 2,000.99 | USD | 10 |
| 4210 1421 Inspection and delivery to storage (La | 10 | MIN | 1,000.00 | MIN | 860.81 | USD | 3,777.51 | 713.67 | 4,491.18 | USD | 10 |
| Work scheduling | 0.1 | PC | 10.00 | PC | 120.00 | USD | 5.00 | 7.00 | 12.00 | USD | |
| Sales order processing | 0.1 | PC | 10.00 | PC | 200.00 | USD | 20.00 | 0.00 | 20.00 | USD | |
| 1000 100-200 Activation | 1 | PC | 100.00 | PC | 6,674.51 | USD | 6,303.56 | 370.95 | 6,674.51 | USD | 10 |

Key Figures

| Key Figures | Value |
|----------------|---------------|
| Total Cost | 47,307.96 USD |
| Total Quantity | 100.00 PC |

Item Details

General

Active: ☒ OK

Status: ☐ OK

Item Category:

Description:

Material No.:

Material Description:

Plant:

Cost Element:

Material Type:

Material Group:

Origin Group:

Overhead Group:

Costing Lot Size:

Engineering Change No.:

Net Weight:

Gross Weight:

Volume:

Comments:

Organization:

Item Details:

Costing Sheet:

Component Split:

Capabilities

ERP integration to price and materials

Simulation. What if analysis

Profitability simulation target costing

UI, flexible structure creation

Lifecycle costing

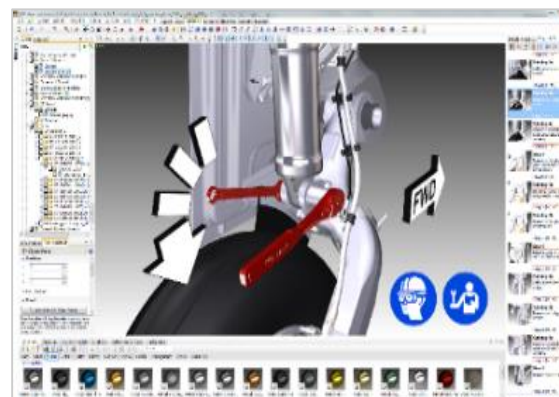
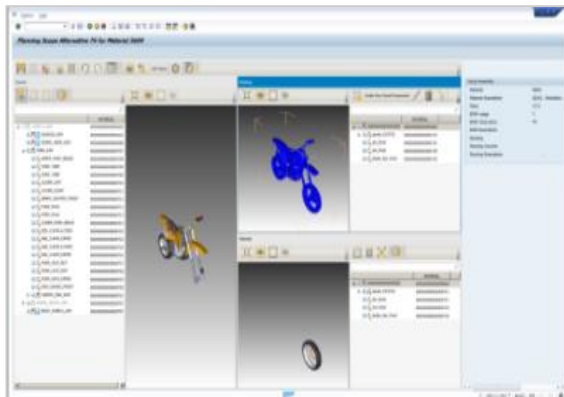
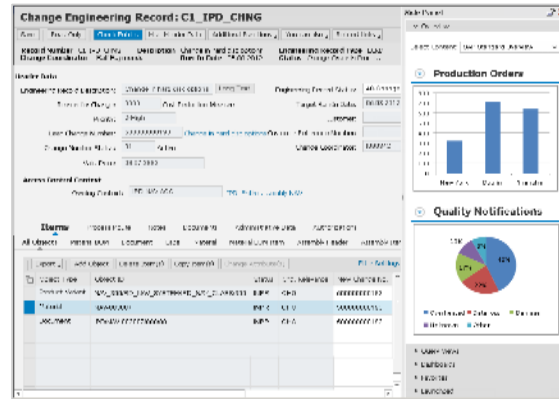
Customer Examples

- International Automotive Suppliers
- Global Machinery Industry Players
- Midsized tier one suppliers
- High Tech global players

Collaborate

SAP Enterprise Product Engineering

User Experience



Capabilities

Engineering change management

Document management/access control

Product structure management with variants

Handover to manufacturing

Context sensitive analytics with real time product data

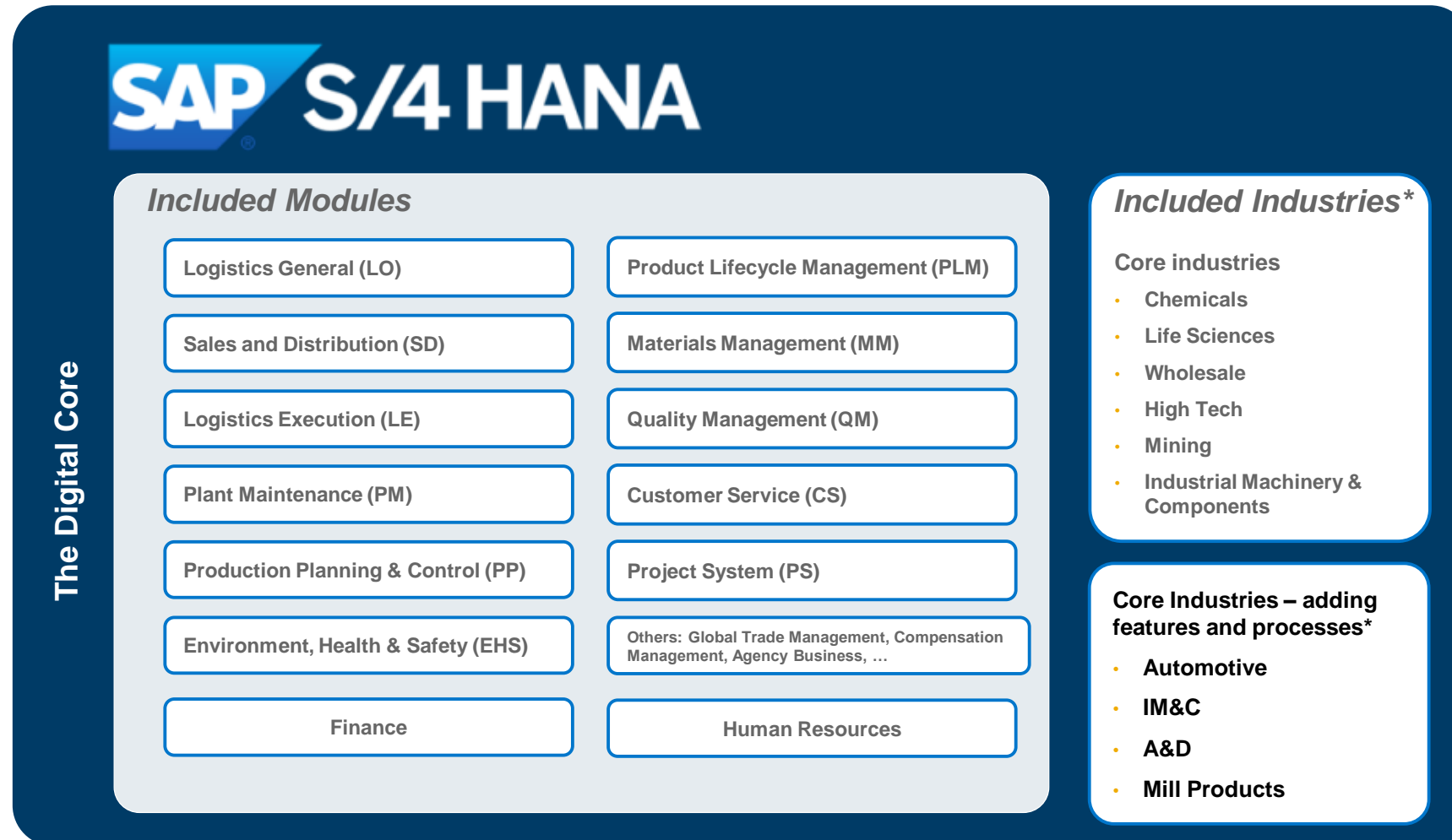
Visual work instructions, technical publishing

Customer Examples



SAP S/4HANA

Next-Generation Business Suite



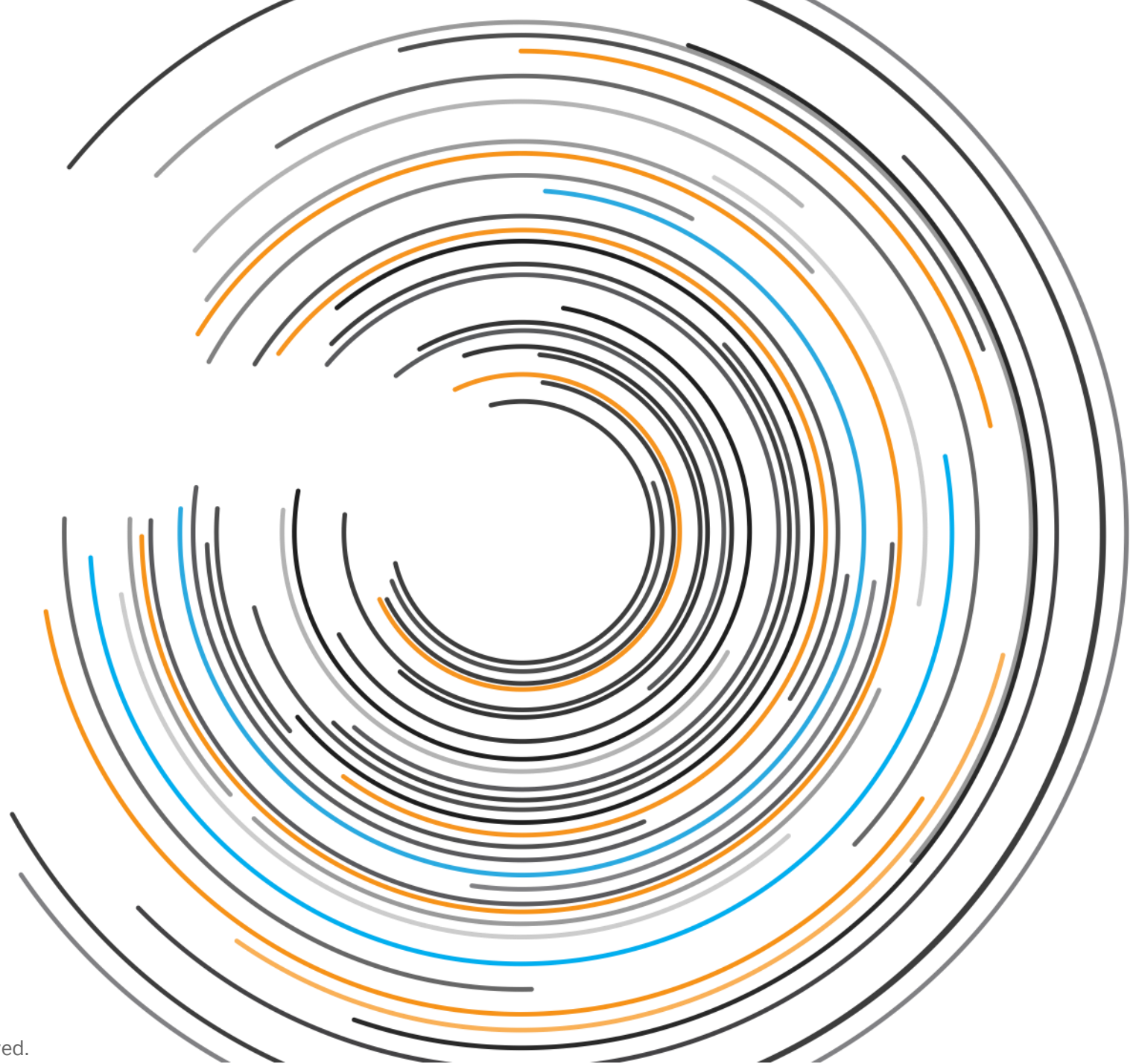
Feature and function parity to SAP ECC 6.0x

plus

- » Major innovations in core modules like **Finance** and **Materials Management and Operations**
- » Inclusion of additional **industries** in the Core
- » Major Simplifications (http://help.sap.com/s4hana_op_1511)
- » Supporting **digital Trends** like Internet of Things, Business Networks, etc

*See Roadmap

Planned



Systems Engineering

Supporting All Design Phases of Intelligent Connected Products

Labs Preview - Vision

Ideas for Future Capabilities

Requirement-driven Design

Systems Engineering integrated with PLM

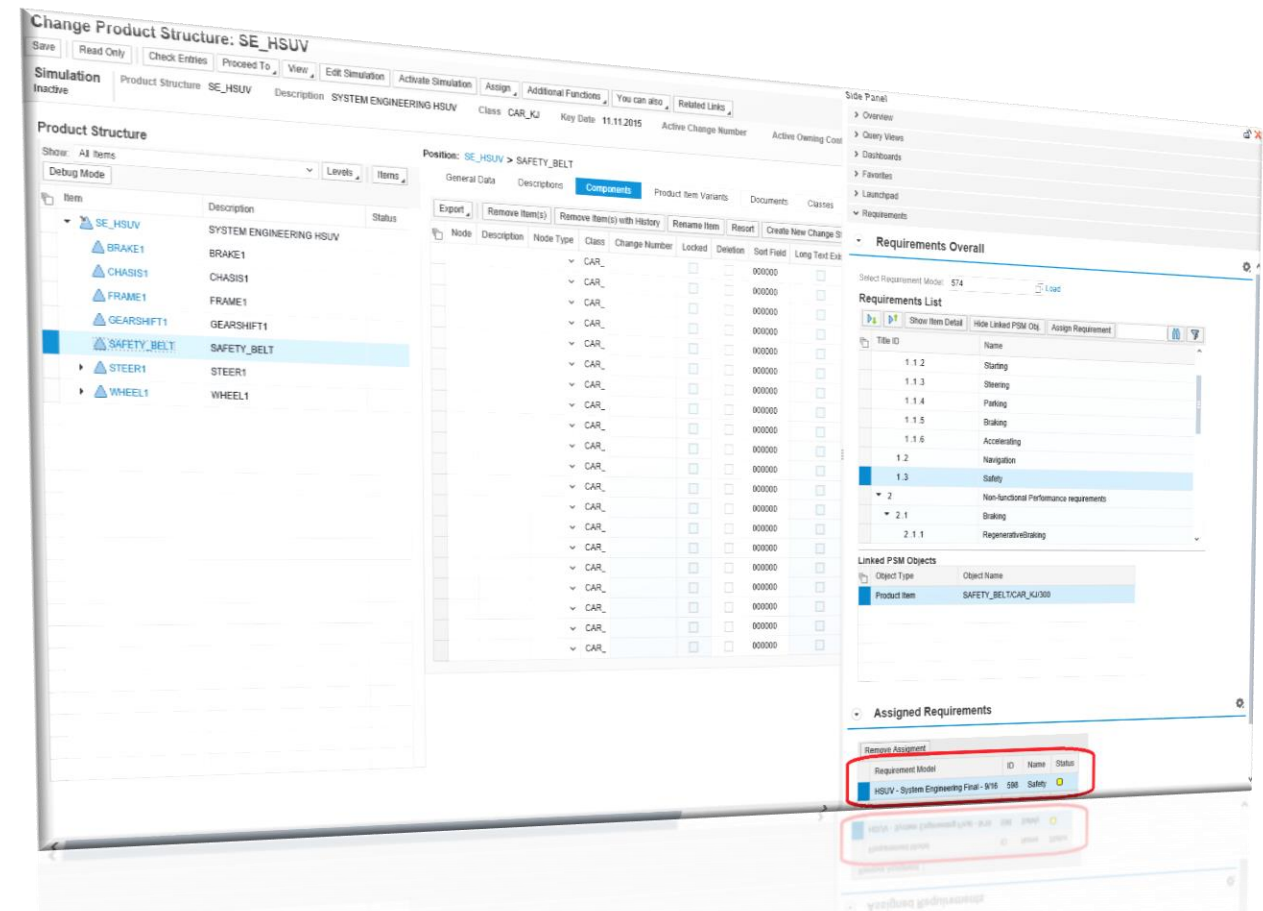
Total quality control cycle

Requirement-driven simulation

Change management control

Systems Engineering cockpit

Feedback application supports product decisions based on usage information (IoT)



Planned

Embedded Software

PLM for Intelligent Connected Products

Labs Preview - Vision

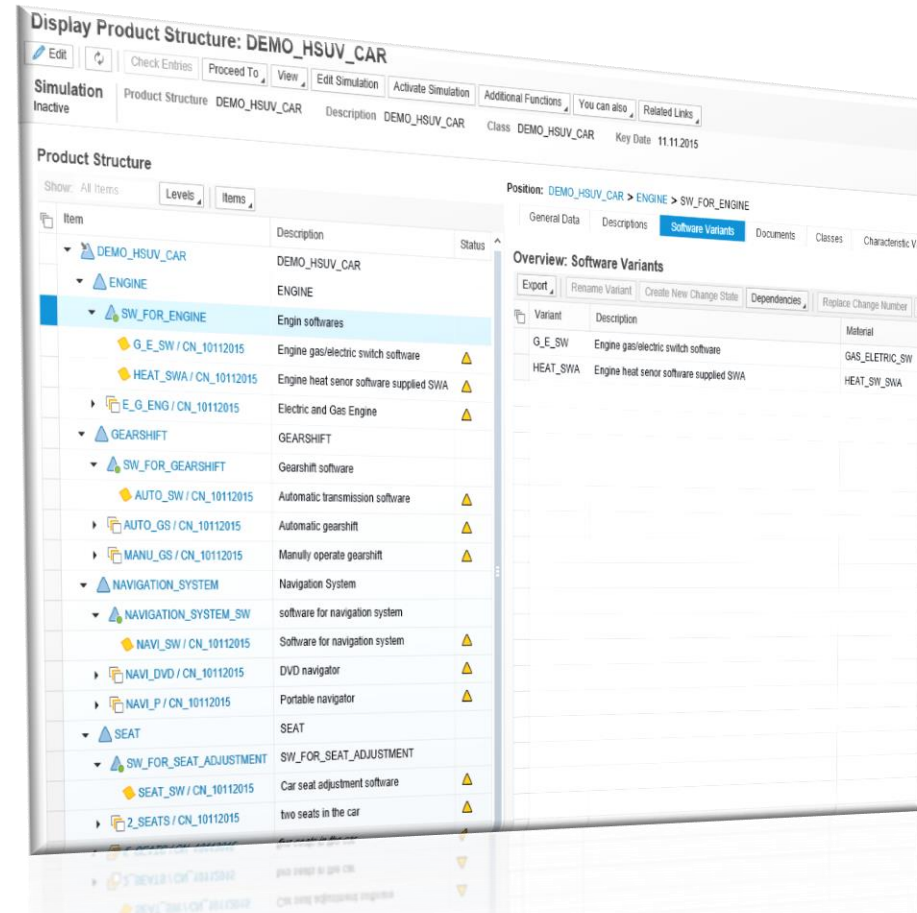
Ideas for Future Capabilities

Embedded Software maintained in the development product structure

Integration of software development tools

Hand-over to manufacturing and to service

Compatibility Management between Software, Hardware and Mechanics for the product lifecycle



Planned

Product Configuration on HANA

New integrated Product Configurator

Labs Preview - Vision

Ideas for Future Capabilities

High performant state of the art configurator

Flexible Fiori based configuration UI

Improved user guidance by precise value restrictions and conflict handling

Loose coupling of Sales and Production view of configuration

New Fiori based simulation environment

Syntax enhancements (e.g. negative tables)

New Fiori based modelling environment

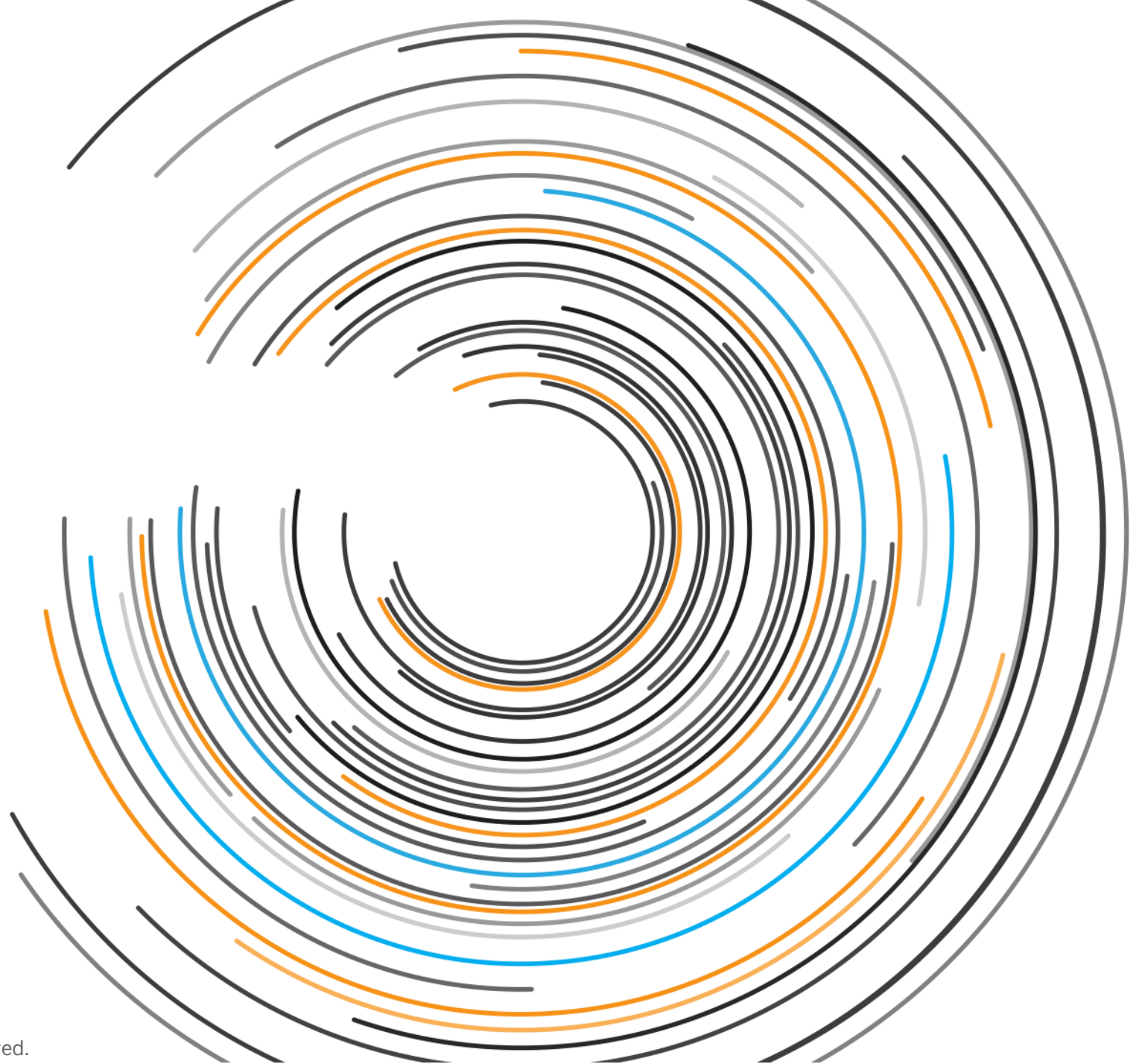
Simplified Engineer to Order process

The screenshot displays a Fiori-based configuration interface for a 'Utility Contract (Bundle)'. The title bar indicates the configuration status is 'Incomplete'. The main content area is divided into sections: 'Services', 'Contract', and 'Customer Data'. Under 'Services', there is a 'Product Selection' section with checkboxes for Electricity, Gas, Telephone, and Broadband. A note on the right explains bundle discounts: 'Please note that our company offers bundle discounts! If you receive more than one service from us, we'll apply a bundle discount to ALL your contracts. If you order 2 services, you'll receive 2% discount. If you order 3 services, you'll receive 3% discount. If you order 4 services, you'll receive 4% discount.' Below this, a table lists the services and their associated CO2 emissions and sources. The 'Contract' section includes a 'Duration type' dropdown (set to '<not assigned>'), a 'Contract Duration (Months)' dropdown (set to '<not assigned>'), and fields for 'Contract Start Date', 'Contract End Date', 'Billing Period', and 'Method of Payment'. The 'Customer Data' section is partially visible at the bottom. A 'Submit' button is located at the bottom right of the form.

| Service | Average CO2-Emission | Sources as of 2014 |
|-------------|---------------------------------|---|
| Electricity | 471 g/kWh | 41 % fossil, 23% nuclear, 36% renewable |
| Gas | Average CO2-Emission: 471 g/kWh | 41 % fossil, 23% nuclear, 36% renewable |
| Telephone | Average CO2-Emission: 471 g/kWh | 41 % fossil, 23% nuclear, 36% renewable |
| Broadband | Average CO2-Emission: 471 g/kWh | 41 % fossil, 23% nuclear, 36% renewable |

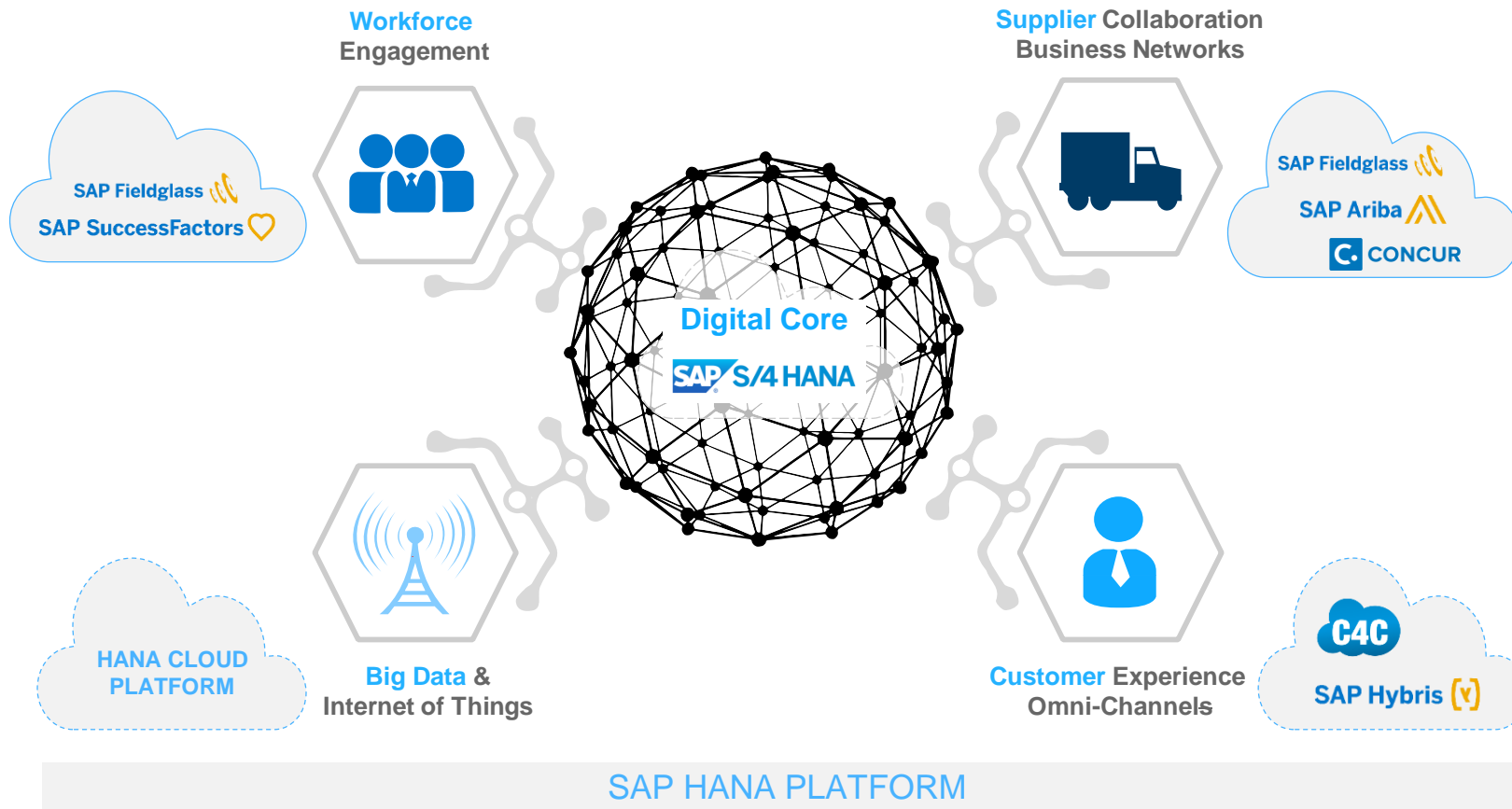
Planned

Future



SAP Framework for Digital Business

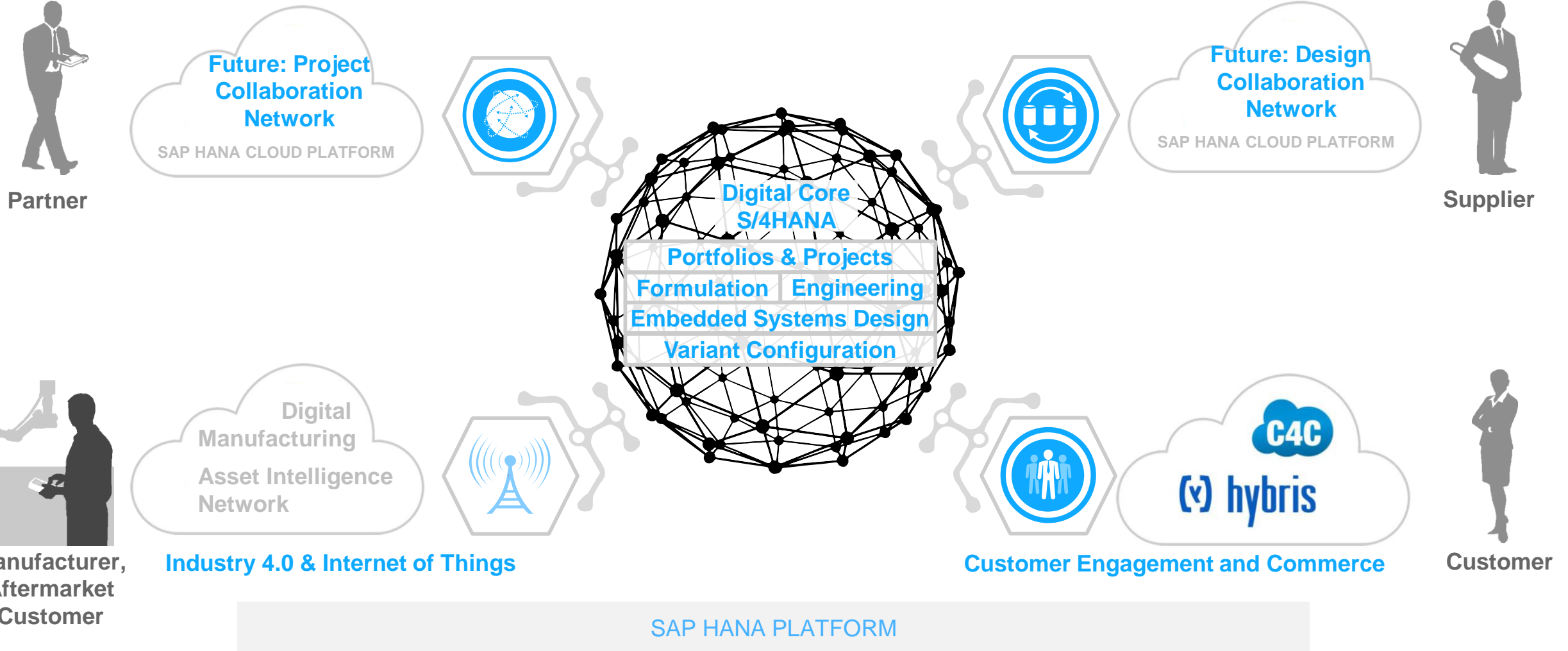
Adapting to the digital economy requires a simple and powerful strategy framework



Future

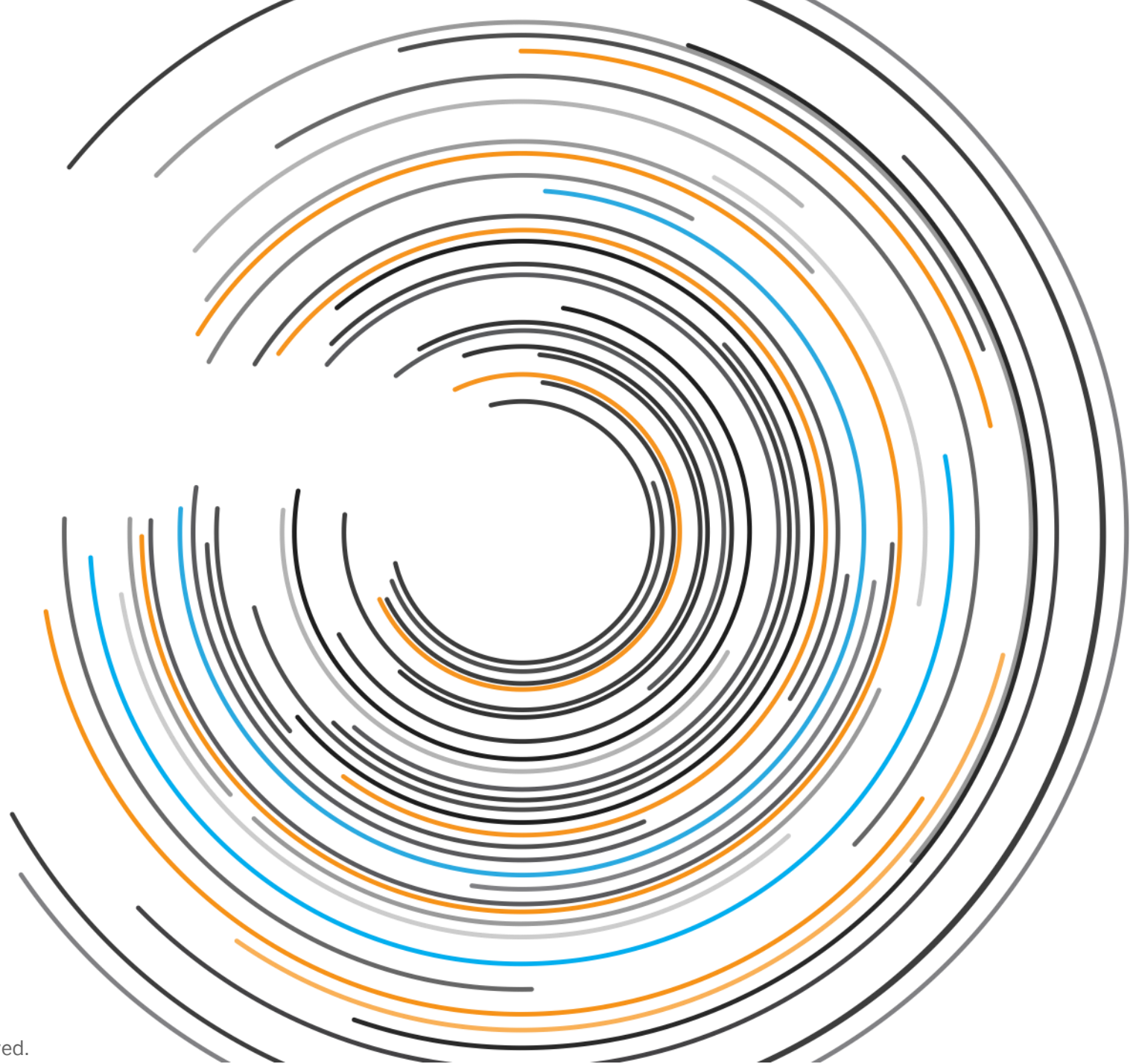
SAP Connected Products

The Digital Product Innovation Platform



Future

Wrap Up



Innovation highlights in R&D/engineering

Project and portfolio management

Recent innovations

- Enhanced collaboration between project team members and stakeholders
- Integration with engineering change management
- Sharing of project documents with internal and external parties using the SAP Document Center solution
- SAP Fiori apps for project systems in SAP S/4HANA, on-premise edition
- Cash flow planning

Planned innovations

- Customer Connection 2016 for project systems in SAP
- Additional scheduling integration scenarios and enhanced capabilities for SAP Enterprise Project Connection
- Simplified authorization for portfolio and project management
- SAP Fiori apps for project team members

Future direction

- Project networks: Cloud-based project platform supporting collaborative project execution across internal and external project teams
- Delivering project and portfolio management capabilities for SAP S/4HANA as the future platform for an integrated enterprise processes
- Simplification of project and portfolio management capabilities through additional SAP Fiori apps and optimized data model
- Leveraging in-memory support for real-time analytics based on SAP HANA and seamless ERP integration scenario
- Visualization of project structure and schedule based on SAP Fiori apps

Click on recent and planned innovation names for more details

Innovation highlights in R&D/engineering

Design orchestration

Recent innovations



KPI dashboards for engineering records



Enhancements to product structure and assembly management



Recipe development – labeling enhancements 2015



Enhancements to the SAP Engineering Control Center integration tool



Visual Enterprise Manufacturing Planner

Planned innovations



Enhancements for product structure and assembly management in SAP enhancement package 8 for SAP ERP 6.0



Enhancements for product structure and assembly management in SAP enhancement package 8 for SAP ERP 6.0



Product lifecycle management: target-driven recipe development



Recipe finder for recipe development in SAP Product Lifecycle Management – search and result screen enhancement



Manufacturing engineering: Visual enterprise manufacturing planner

Future direction



Systems Engineering: MCAD, ECAD and Software Tool integration. Requirements Management integration and support for Model Based Systems Engineering.



Configuration: Variant configuration as the key enabler in engineering, manufacturing, sales, and beyond to manage “lot size 1”



Product networks: Developing the future of collaborative product design and project execution in a public cloud network



Simplify and secure: Investments in the evolution of SAP S/4HANA and securing our customers’ current landscape

Click on recent and planned innovation names for more details



Thank you

Frank Spiegel

Chief Product Owner Strategy & Eco System– LOB R&D / Engineering
Products & Innovation

Frank.Spiegel@sap.com

© 2016 SAP SE or an SAP affiliate company. All rights reserved.

No part of this publication may be reproduced or transmitted in any form or for any purpose without the express permission of SAP SE or an SAP affiliate company.

SAP and other SAP products and services mentioned herein as well as their respective logos are trademarks or registered trademarks of SAP SE (or an SAP affiliate company) in Germany and other countries. Please see <http://global12.sap.com/corporate-en/legal/copyright/index.epx> for additional trademark information and notices.

Some software products marketed by SAP SE and its distributors contain proprietary software components of other software vendors.

National product specifications may vary.

These materials are provided by SAP SE or an SAP affiliate company for informational purposes only, without representation or warranty of any kind, and SAP SE or its affiliated companies shall not be liable for errors or omissions with respect to the materials. The only warranties for SAP SE or SAP affiliate company products and services are those that are set forth in the express warranty statements accompanying such products and services, if any. Nothing herein should be construed as constituting an additional warranty.

In particular, SAP SE or its affiliated companies have no obligation to pursue any course of business outlined in this document or any related presentation, or to develop or release any functionality mentioned therein. This document, or any related presentation, and SAP SE's or its affiliated companies' strategy and possible future developments, products, and/or platform directions and functionality are all subject to change and may be changed by SAP SE or its affiliated companies at any time for any reason without notice. The information in this document is not a commitment, promise, or legal obligation to deliver any material, code, or functionality. All forward-looking statements are subject to various risks and uncertainties that could cause actual results to differ materially from expectations. Readers are cautioned not to place undue reliance on these forward-looking statements, which speak only as of their dates, and they should not be relied upon in making purchasing decisions.