

# SAP S/4HANA Finance: Un mundo de posibilidades para simplificar y potenciar la gestión empresarial

Leticia Cavagna, SAP Analytics España  
Iguácel Ordejón, Soluciones Financieras SAP España  
16 de Febrero de 2016

# Reporte flexible y armonizado en SAP S/4HANA Finance

- Identificación inmediata irregularidades mediante la navegación a líneas individuales a partir de KPI's
- Acceso instantáneo Real Time a datos operacionales
- Capacidad de mostrar vistas contables y de gestión al mismo tiempo

The screenshot displays the SAP S/4HANA Finance interface. At the top, the title 'Financial Statement' is visible. Below it, there are several input fields for configuration: Variant (Default), Company Code (0060), Ledger (0L), Financial Statement Version (Z10Y), Balance Sheet Type (Normal), Key Period (06, 2013), Key Comparison Period (06, 2012), and Currency (BRL). A search bar and buttons for 'Reset' and 'Search' are also present.

Below the configuration fields, there are tabs for 'All Accounts', 'Balance Sheet', 'Profit & Loss', and 'Notes'. The 'Balance Sheet' tab is selected. A search bar for 'Search Node' is located below the tabs.

The main content area shows a tree view of accounts on the left, categorized into ASSETS, LIABILITIES, and SHAREHOLDER'S EQUITY. The right side of the screen displays a detailed data table with columns for G/L Account, Cost Center, Material, Customer, and Actual Amount. The table includes various line items with their respective values and results.

G/L Account	Cost Center	Material	Customer	Actual Amount
Adv & Promo	500000	91507690 UNK-SLS/COS/A&P-SP-P	#	20.553,000,00
<b>Result</b>				<b>20.553,000,00</b>
COGS Split Con DTI	220606	#	Not assigned	82,42
<b>Result</b>				<b>82,42</b>
COGS Split Con Expen	220603	#	Not assigned	65,38
<b>Result</b>				<b>65,38</b>
COGS Split Con Labor	220604	#	Not assigned	103,42
<b>Result</b>				<b>103,42</b>
COGS Split ICO Wbs	220611	#	Not assigned	59,04
<b>Result</b>				<b>59,04</b>
COGS Split Packaging	220602	#	Not assigned	152,26
<b>Result</b>				<b>152,26</b>
COGS Split Raw Mat	220601	#	Not assigned	227,74
<b>Result</b>				<b>227,74</b>
COGS Split Sourcing	220603	#	Not assigned	35,92
<b>Result</b>				<b>35,92</b>
COGS Split Support	220607	#	Not assigned	167,88
<b>Result</b>				<b>167,88</b>
College Feeding Disc	200012	#	Not assigned	7.500,000,00
<b>Result</b>				<b>7.500,000,00</b>
Computer Expense	400213	20007690 Finance II	#	1.800,000,000,00
<b>Result</b>				<b>1.800,000,000,00</b>
Copy Expense	400214	20007690 Finance II	#	1.800,000,000,00
<b>Result</b>				<b>1.800,000,000,00</b>
Discount 1	200346	93507690 UNK-SLS/COS/A&P-SP-V	#	15.921,63
<b>Result</b>				<b>15.921,63</b>
Discount 2	200243	93707691 IRL - Adv & Promo	#	3.750,000,00

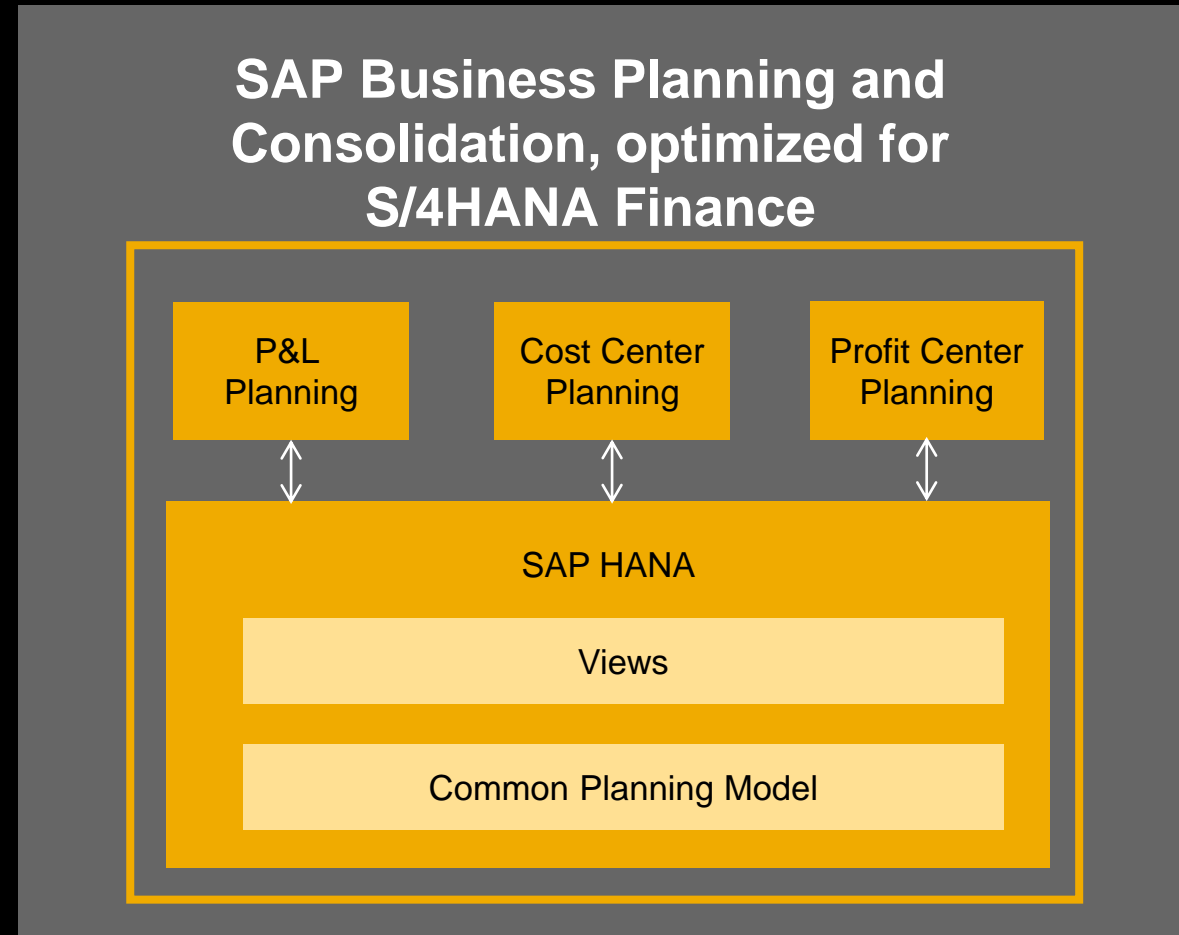
# Cash Management en Tiempo Real

- Visibilidad inmediata de posiciones de tesorería globales
- Análisis en tiempo real
- Proyecciones de liquidez incluyendo análisis de flujo de caja



# Creación y simulación de nuevos modelos de negocio

- Acceso en tiempo real a datos SAP ERP
- Análisis de variación actual vs. plan según las transacciones transcurrentes en S/4HANA Finance
- Análisis rápido de datos financieros y resultados



# Integrar planes financieros a través de la organización

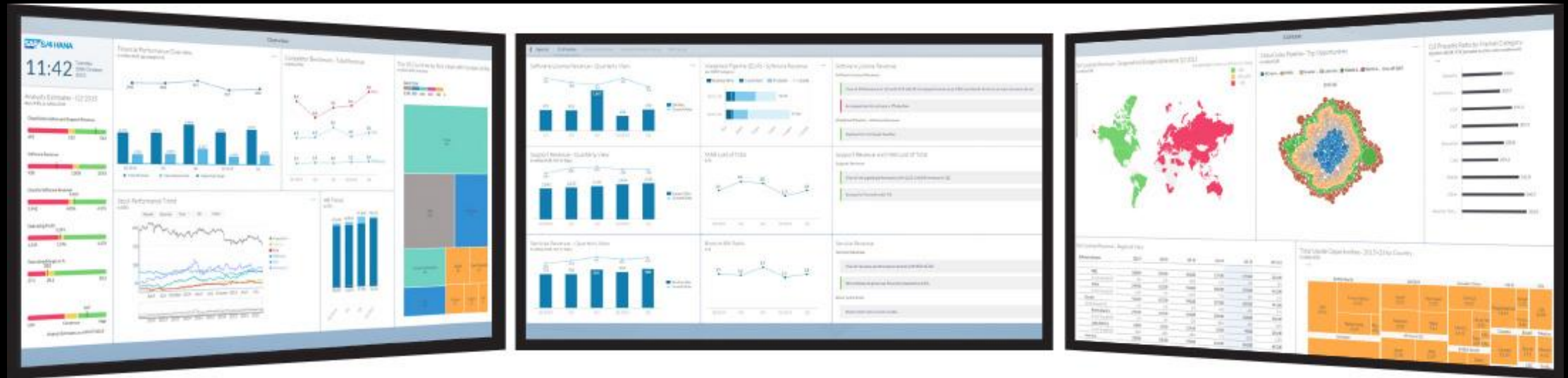
S/4HANA Finance prove plantillas pre-configuradas para:

- Cost Center Planning
- Internal Order Planning
- Project Planning
- Profit Center Planning
- Cost of Sales Planning
- P&L Planning
- Market Segment Planning
- Liquidity Planning
- Balance Sheet Planning

The screenshot displays the SAP Business Planning and Consolidation (BPC) interface. At the top, there's a navigation bar with the title 'Simple Finance Integrated Business Planning'. Below it, there are filters for 'Category' (Plan01) and 'Plan Year' (2015). A summary row shows key financial metrics: Actual DEC 2014 (195,617), Plan DEC 2014 (200,598), Actual Q4 (518,712), Actuals 2014 (1,898,774), Actuals JAN 2015, and Planning JAN 2015 (173,775). Below the summary, there's a table with columns for '12 2014 Actual', '12 2014 Plan', '% of Plan', 'Actual - Plan', '1 2015 Actual', '1 2015 Plan', 'Comment', 'Q4 2014 Actual', and '2014 Actual'. The table lists various cost centers and their associated accounts, such as 'Purchased services', 'Salaries & Wages', 'Benefits', 'Recruiting Costs', and 'Internal Training', with corresponding financial values and variance indicators.

Cost Center	G/L Account	12 2014 Actual	12 2014 Plan	% of Plan	Actual - Plan	1 2015 Actual	1 2015 Plan	Comment	Q4 2014 Actual	2014 Actual
Overall Result		195,617	200,598	98	-4,981		173,775	#	518,712	1,898,774
3351 Sales Territory A1	417000 Purchased services	13,584	12,905	105	679		11,614	#	36,676	135,998
	430100 Salaries & Wages	12,491	13,115	95	-624		12,838		34,938	132,138
	430200 Benefits	4,261	4,517	94	-256		4,149	#	11,445	42,686
	430300 Recruiting Costs	11,838	12,311	96	-473		11,468		31,695	114,237
	430410 Internal Training	11,726	12,762	92	-1,036		9,837		29,555	102,328
	474240 T&E - others	9,120	9,941	92	-821		9,036		24,624	91,301
	475510 Market Event - Gen.	13,848	13,937	99	-89		13,521		37,554	138,917
Result		76,868	79,508	97	-2,640		72,463	#	206,488	757,595
3352 Sales Territory M2	415000 External procurement	8,685	9,119	95	-434		7,970		23,449	86,943
	430100 Salaries & Wages	17,147	18,518	93	-1,371		13,703		41,345	150,188
	430200 Benefits	7,652	8,264	93	-612		4,706		15,880	56,956
	430300 Recruiting Costs	7,065	6,712	105	353		4,755		16,713	59,323
	430410 Internal Training	13,725	14,686	93	-961		9,682		31,969	109,726
	474240 T&E - others	6,615	7,210	92	-595		6,490		17,860	66,224
	475510 Market Event - Gen.	15,620	16,557	94	-937		13,046		39,094	144,425
Result		76,509	81,066	94	-4,557		60,352		186,310	673,786
3353 Sales Territory M3	415000 External procurement	3,025	3,207	94	-182		2,944		8,168	30,238
	430100 Salaries & Wages	11,090	9,981	111	1,109		10,196		32,638	120,287
	430200 Benefits	2,375	2,351	101	24		3,295		9,054	35,090
	430300 Recruiting Costs	8,042	6,755	119	1,287		7,621		23,724	86,415

# El Consejo Digital – Digital Boardroom





# Encuentre mas informacion



[www.sap.com/finance](http://www.sap.com/finance)

- Experimente el Mapa de viaje [simplefinance.sapjourneymap.com](http://simplefinance.sapjourneymap.com)

- Inscríbese en nuestro Newsletter Financiero [www.sap.com/finance-newsletter](http://www.sap.com/finance-newsletter)





# Gracias!

[leticia.cavagna@sap.com](mailto:leticia.cavagna@sap.com)

[m.iguacel.ordejon@sap.com](mailto:m.iguacel.ordejon@sap.com)