

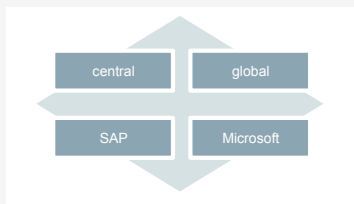
Beyond Warehousing - SAP HANA Strategy Munich Re

September 9, 2014
Dr. Rainer Janßen

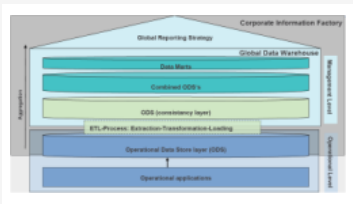
Agenda



Munich Re



IT Strategy



BW traditional



Beyond
Warehousing

Munich Re



Munich Re (Group)

Added value within the group

Diversified structure – More security



* This listing is incomplete and provides no precise indication of shareholdings.

Munich Re's areas of professional competence

What sets us apart from others

Tailor-made solutions and efficiency



We assume

new and complex risks,

- extending the boundaries of insurability,
- developing innovative coverage concepts.

We offer

- first-class modelling and tailored solutions,
- efficient reinsurance of standard risks,
- high capacity per risk exposure.

Service and know-how



We provide

risk-oriented services such as

- underwriting tools like Nathan and MIRA,
- knowledge transfer in client seminars,
- efficient cooperation via connect.munichre.com.

We support

- product developments.

Security and reliability



We facilitate

attractive capital management:

- transfer of risks to the capital markets
- risk management for investments (ALM)
- capital relief
- Solvency II consulting

Munich Re – Reinsurance



12,000 Employees

€28bn Premium Income

Solutions and Products for more than

4,000 clients on 5 continents

1 Message: **NOT IF, BUT HOW**



Reinsurance

Present in all markets



IT Strategy



Munich Re IT supports Reinsurance and Munich Health



 Responsibility of Munich Re IT * Operation of Infrastructure

From individual Solutions to Global Standards

1997

Client system	GIDIAL	PC	SICS		MROC clients
Statistics forecast	Forecasts Statistics	RAIS (Non - life)	PC, RDIAL SICS		
Fac and treaty systems	ERIS 95	ERIS 95	ERIS 95		
	ERB T				
	ERB A				
	ERB Sach	RAIS (Non - life)	X01		
	ERB L				
	ERB Comp.				
	Treaty	Treaty	Treaty SICS		
Claims system	HUK claims	RAIS (Non - life)	SICS HUK claims		
Technical accounting	RESY		SICS		
Non - tech. accounting	SAP/R3	SUN package	SQL. COMM	Data info	SUN package
Text email	M/Text M/Mail	WP Compuserve	M/Text M/Mail	M/Text Exchange	WP, MS Word Exchange

2014

Non - Life incl. Healthcare	UWPF (Fac/Treaty) + SAP-FS-RI/RM- NL/ FS-CD + GPS + GRP
Life	Actuarial Tools + SAP-FS-RI/msg.LRM/FS- CD + GPS
Non - technical Accounting	SAP Global Template
Infrastructure & Techn. Platform	Windows, .net, LINUX, SAP, SAP-BW, ORACLE
	Corporate Network, MRWeb, MS Exchange, MS Office

Standard

Global

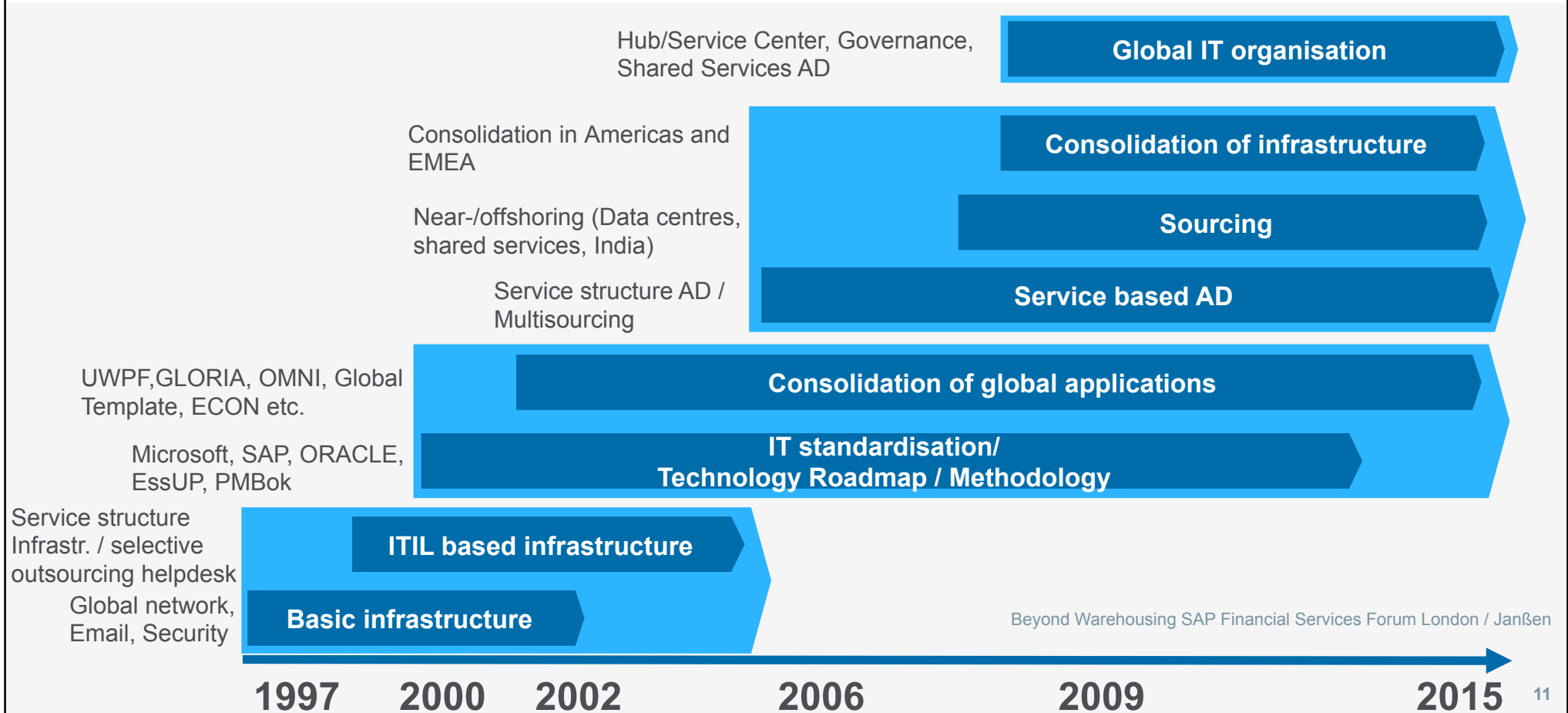
SAP

Microsoft

IT Governance

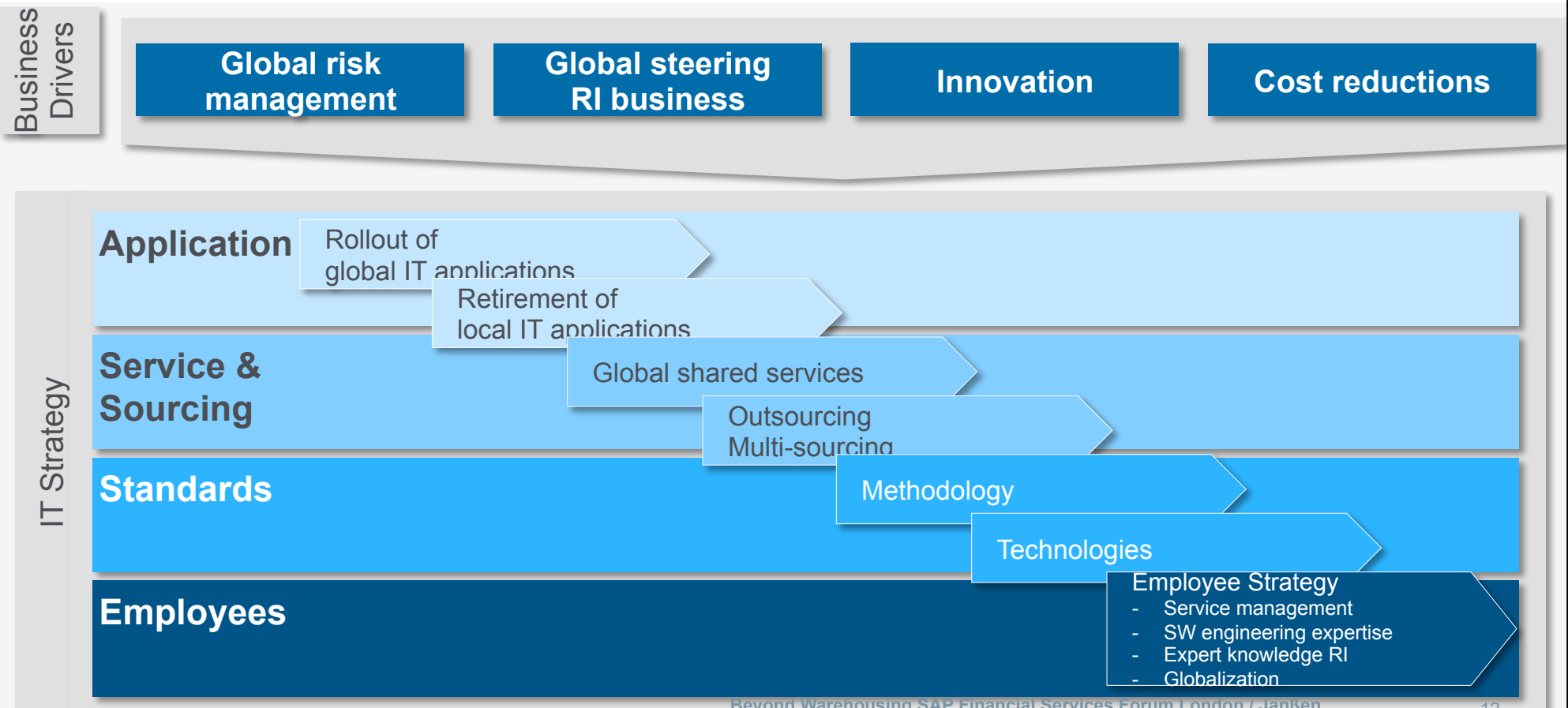
Multi-Sourcing

The implementation of fundamental processes, structures and applications are the basis for today's & tomorrow's success



Global IT Organization of Munich Re

Overall IT Strategy Aligned with Key Business Drivers



Infrastructure Key Figures 2014 – Q2

Number of Munich Re employees
~ 12.000



Workplace

- 5.026 mobile devices
- 1,817 virtual desktops
- 13,120 clients

Server

- 1,440 physical servers
- 3,223 physical CPUs
- 13,952 virtual CPUs
- 6,721 cores
- LINUX and WINDOWS

Applications

- 324 core systems
- .NET and SAP
- 1986 applications on clients

Network - WAN

- 2,547,612 kbps in total
- 13,120 client => ~194kbps per user

Messaging

- 22,580 (15000) Mailboxes
- 16,6 Mio incoming Emails per year
- 10,7 Mio outgoing Emails per year
- 16,8 Mio threat Emails blocked per year
- including 574,500 SPAM Emails

Security

- 140,000 damaging / vicious Data packages blocked
- Protection from Virus, Trojans, Spyware around 400,000 in circulation – no virus attack

Storage

- 20.56 PB Data absolute
- ~ 40% Data growth per year

BW traditional



Data Warehouse traditional...

3 Time zones

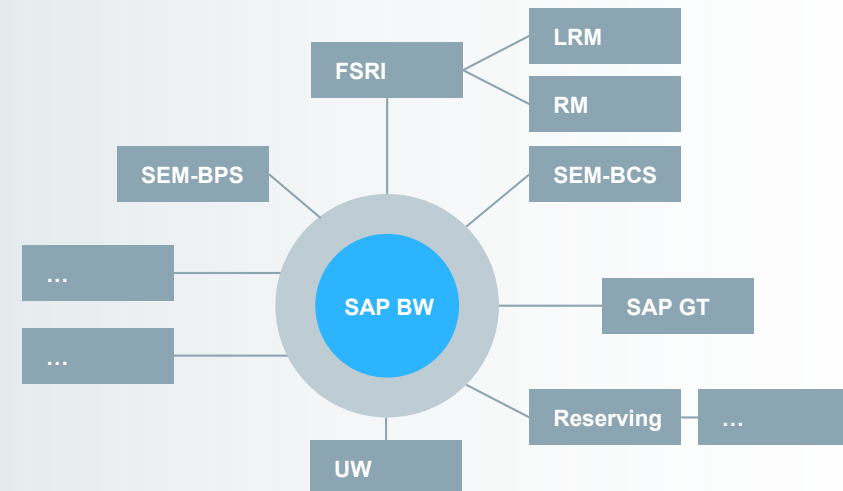


BW-A



Permanent Loads

Complex Data Structures



Redundant Data Storage

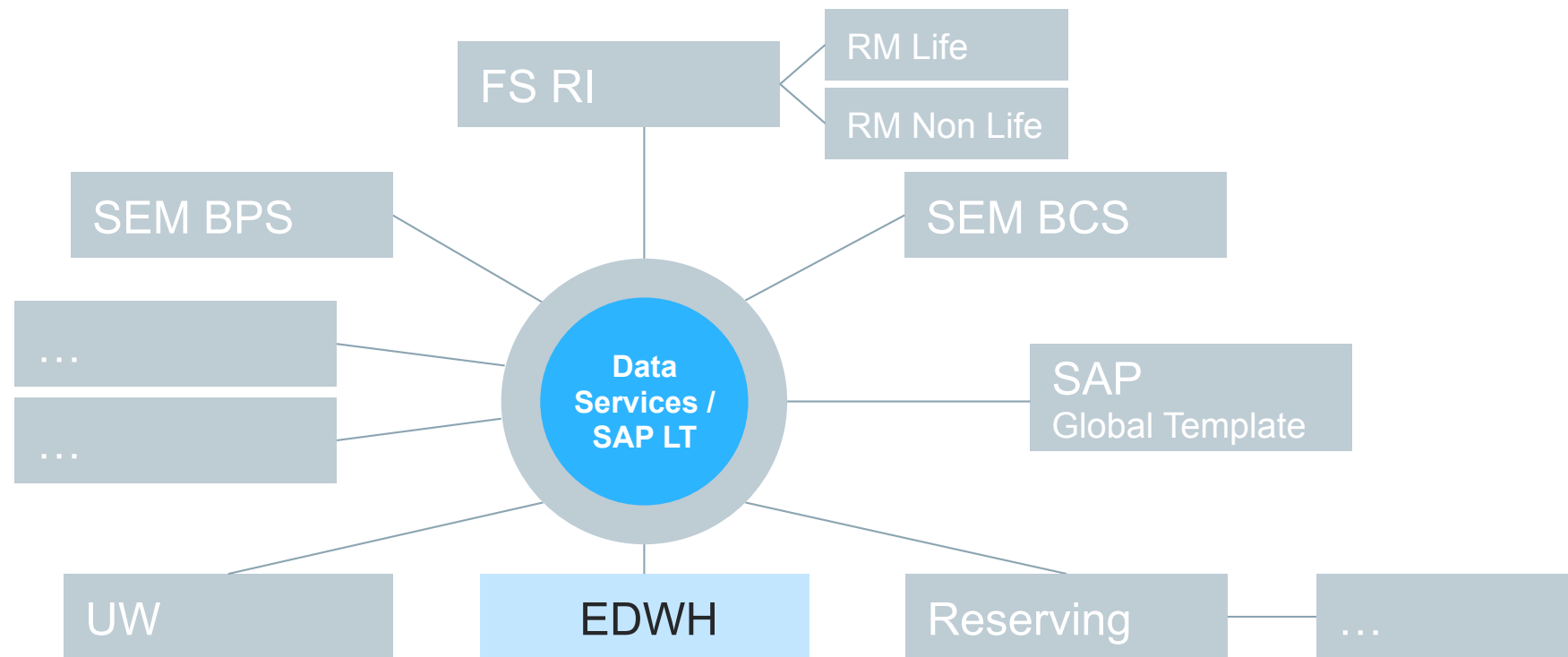
Diverse Transformation Logic

Future Requirements difficult and costly to implement

Beyond Warehousing



Enterprise Data Warehouse and related Systems Target Architecture



SAP BW vs SAP HANA

SAP BW – old world

- Operational Reporting
- Management Reporting
- Data Enrichment
- Data Distribution

SAP HANA – new world

- Operational Reporting **from Source System / Real-time**
- Management Reporting
- Data Management, **Calculation, Logic**
- **Simplification**
- **Additional Data Volume**
- **Performance**
- One version of truth
- Innovation
- Predictive Analytics
- Simulation
- New Business Use Cases
- Big Data

Improve

Innovate

Beyond Warehouse ... Core Products

SAP HANA

- HANA Studio
- BW on HANA
- HANA Live

Business Objects

- Analysis for Office
- Design Studio
- Web Intelligence
- Lumira

Data Management / ETL

- Data Services
- SAP LT

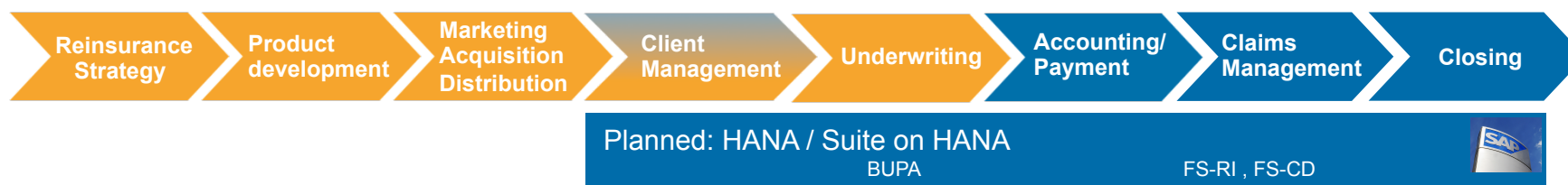
Mobility

- SAP Fiori
- Reporting

Processes Munich Re - Reinsurance

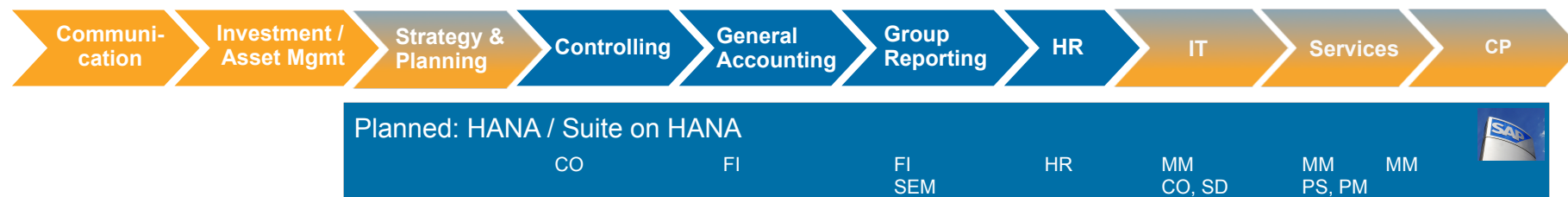
HANA Usage scenarios

Business units



Quelle: DPA

Central units



Quelle: DPA

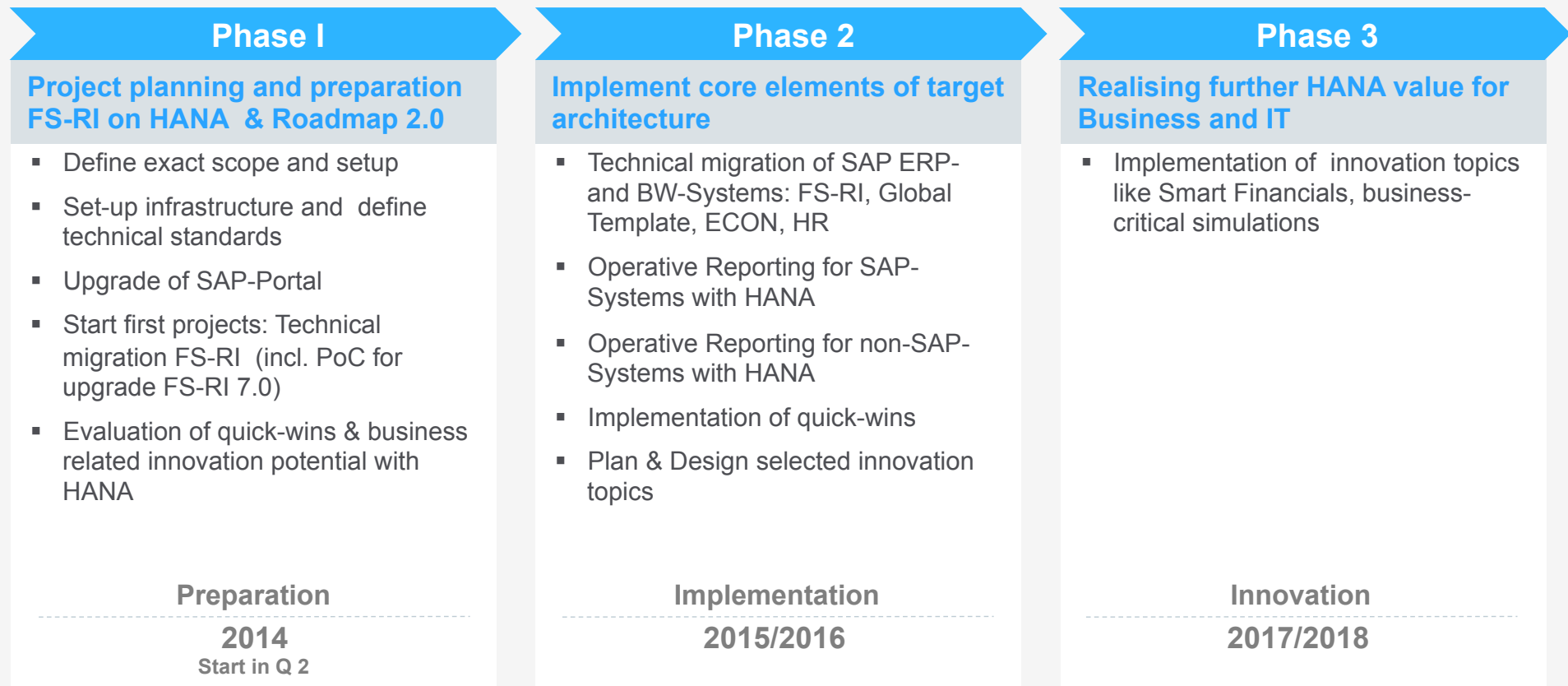
Cross topics



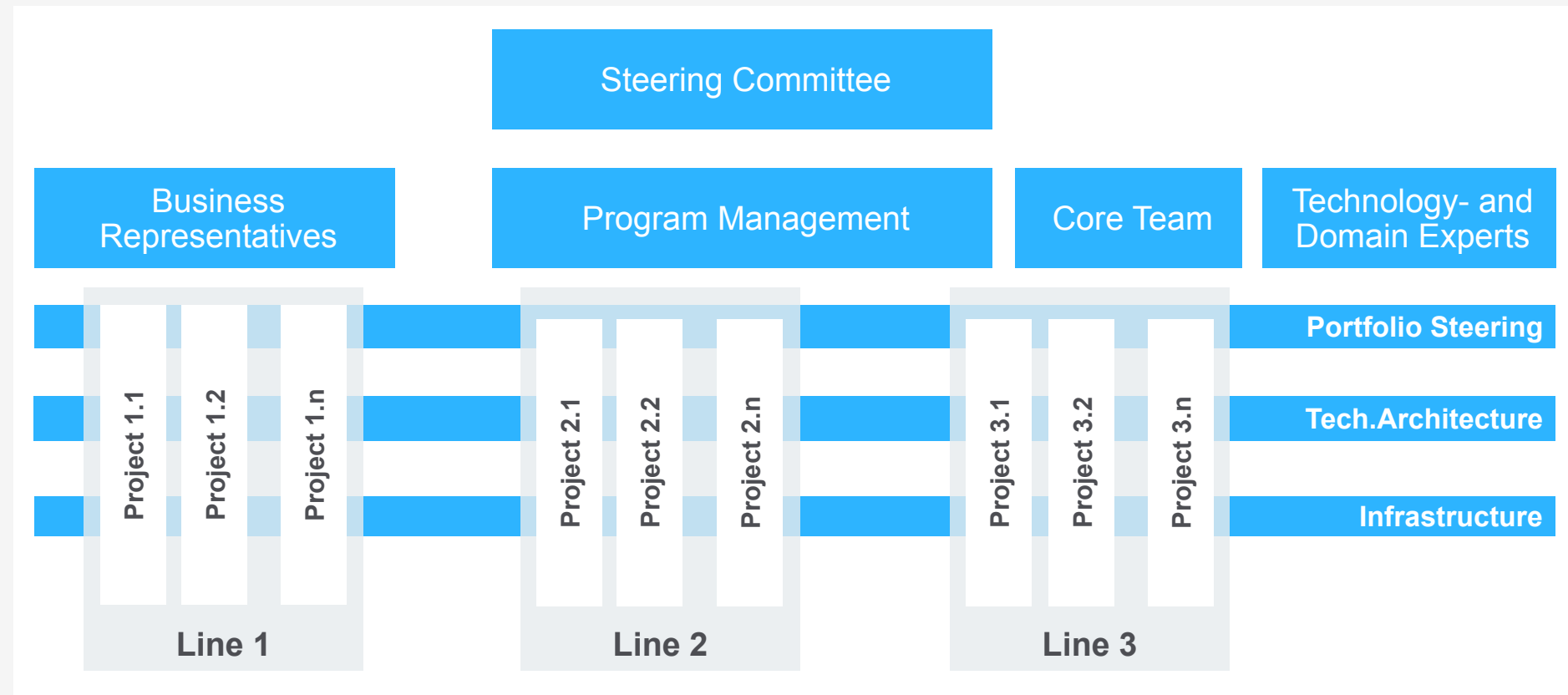
■ fully supported by SAP appl. ■ partly supported by SAP appl. ■ non SAP appl.

HANA-Transformation-Roadmap

Realising of potentials until 2018



Beyond Warehouse Steering of HANA Transformation



HANA means to us ...

- ... a strategic initiative
- ... with board support
- ... high investment to guarantee future proofness
- ... a long, complex endeavour that requires stringent steering ...
- ... new technology, new architecture, new operating models
- ... a challenge!

SAP HANA will enhance our application- and reporting landscape significantly

SAP HANA will be the enabler for innovation



Thank you very much for your attention

Dr. Rainer Janßen
CIO Munich Re

rjanssen@munichre.com
+49 89 3891 2565

Munich RE 

Backup



Munich Re SAP System Lines – Potential Target Scenario

