

SAP Workforce Performance Builder 9.5

Что нового?

Антон Маврин
11 августа 2016



Изменения в SAP WPB по категориям

- ▶ Организация контента
- ▶ Быстрое обучение
- ▶ Совместное создание контента
- ▶ Запись и редактирование симуляций
- ▶ ИТ составляющая
- ▶ Документация
- ▶ Поддержка производительности

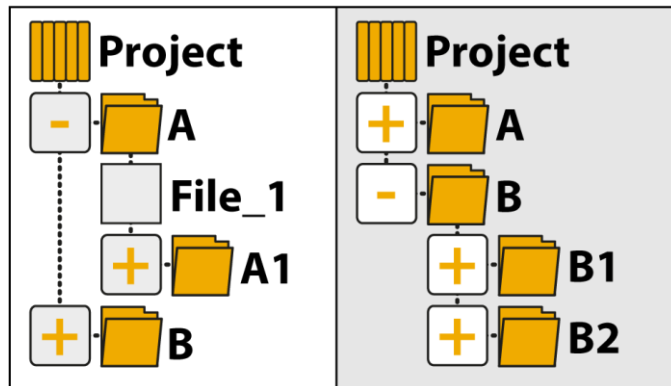
Организация контента

Хорошо продуманная структура контента – ключевой элемент построения эффективной программы обучения, потому что она позволяет создавать, редактировать и публиковать контент с наименьшими трудозатратами.

Организация контента

Дополнительное представление и улучшенный поиск

Recombination view



- Additional content structure tree in project explorer
- Layout can be arranged either horizontally or vertically
- Easily compare and recombine complex workarea structures
- Underlines redundancy free content structure concept via multi-referencing

Enhanced search capabilities within Project Explorer

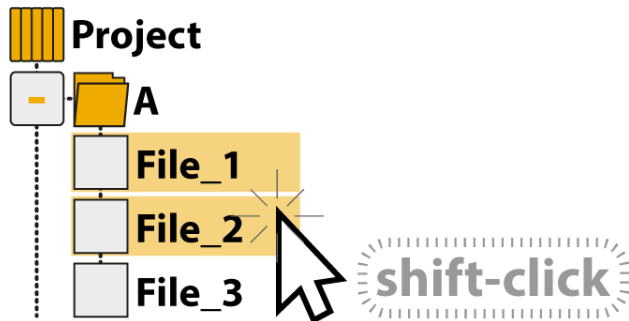


- Search for any parameter of content like roles, assigned tags, language, context, or author
- Use the new search to quickly create a filtered view on the content – for your overview or for content publishing
- Improves ability to easily create different views on the same content

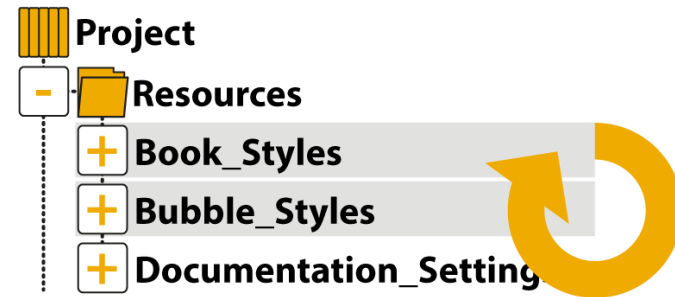
Организация контента

Дополнительные возможности

Multi-selection is now available for the Project Explorer



Duplication of Resources



- Easily create different customized resource variants based on existing standard

Reference count for external objects



- The reference counter has been extended for external objects (e.g. imported media objects and documents)
- Improves finding and managing of using external content

Other improvements

- Improved drag and drop behaviour in Project explorer
- Deletion of unsorted objects
- Export workarea structure
- Workarea handling

Быстрое обучение

Дайте возможность экспертам и разработчикам контента быстро создавать учебные материалы, добавлять в них различные игровые и дидактические элементы для обеспечения успеха вашему проекту обучения.




Быстрое обучение

Шаблоны тестов

3 Europe

Which european city do you see here?



☐ Venice

☒ Amsterdam

☐ Athens

☐ Berlin

7 Component Use Cases

As you are already aware of the 4 different product components, you are also able to match their individual use cases...

Connection: Allows to establish a connection between the matching pair.

Instant Producer

Producer

Manager

Navigator

In-app help

Authoring tool

SME recoder

4 Quiz Items

Do you still remember all quiz items you have passed already? Let's check if you still know what they are used for.

Matching: match two items using a Dropdown List (as seen below) or via Drag & Drop.

Single Choice

Use to select a single correct answer.

Multiple Choice

Use to select multiple correct answers.

Fill in the Blanks

Use to enter text within a paragraph.

Quiz templates allow to create quizzes and questions exactly the way you want them to be.

All quiz elements can now be moved, scaled and styled as desired while the easy, form based creation stays as it is.

6

ulation? Even if
e a try in sorting

menus.

Stop after 50 steps to not overstrain the end user.

Agree on a common screen resolution.

Close apps causing notifications in the systray.

00:03:08

Current Score: 2 / 4

00:03:23

Next >

Быстрое обучение

Аватары для страниц книг и тестов



- Adding avatars to the content provides different possibilities to enhance the learning experience
- Use them to present content, to guide through a story, pose questions or to speak directly to the learner
- Starting with two templates, avatars can be created within Style Editor of WPB
- Different poses, gestures and facial expressions are available
- Each color (e.g. hair, skin, apparel) can be customized and adapted

Быстрое обучение

Тесты на страницах книг и разработка в браузере

Questions in book pages

- Quiz items can be inserted, arranged and designed directly in book pages
- Perfectly suited as interactive questions for didactical purposes within rapid learning content
- Individual navigation paths can be created based on the correct or wrong answer
- The following question types are available:
 - Multiple choice
 - Fill in the fields / blanks
 - Match elements
 - Connection
 - Sorting
 - Slide control
 - Grid
 - Puzzle
 - Hot spot



Create & edit quizzes in the browser



- WPB Manager option now allows to create and edit quizzes without client installation
- Can be done from anywhere using the browser to connect to the editor
- Internet Explorer, Edge, Firefox, Chrome and Safari are supported
- Creation workflow is in line with current producer workflow, no additional training required

Быстрое обучение

Дополнительные возможности

Semi-transparency for hidden objects



To improve handling of complex book pages with a lot of hidden objects, those objects are now displayed semi-transparently

Handling of book page elements

- When adding image objects to a book page, the “Insert image from Workarea” dialog is opened
- The object frame comes with a thinner, dashed line to improve usability for general object arrangement
- When using the diagonal dragger to scale an object, the aspect ratio of the object frame is kept
- Grouping multiple objects can be done via the context menu.

Other new features

- Additional default animations for book page objects offering fly-in and fly-out, zoom in/out and bounce in/out effects.
- **Completion state is sent even when the browser has been closed by the user before ending a quiz**
- When selecting an existing book or group as a template, the included sub-objects of the template, such as book pages, are cloned and not referenced

Совместная разработка контента

SAP Workforce Performance Builder поддерживает сложные рабочие процессы и управляет проектом разработки учебных материалов для каждой роли, вовлеченной в этот процесс.

Совместная разработка контента

Новый интерфейс WPB Manager

The screenshot displays the SAP Workforce Performance Builder Manager interface. The top header includes the SAP logo, 'Workforce Performance Builder Manager', a user welcome message 'Welcome D058143', and a 'Logout' button. A navigation bar contains links for 'Workareas', 'Administration', 'Tasks', 'Learning Reporter', 'Learner View', 'Settings', and 'Help'. The main content area is titled 'Workarea: Whats New Test' and includes buttons for 'Open Producer', 'Open Instant Producer', and 'without Tag'. A search bar is located on the left. A sidebar on the left lists a tree structure: 'Workarea' (expanded), 'Resources', 'My Unsorted Objects', 'Curriculum' (selected), 'My Training project', 'Recording', 'Unsorted', and 'Trash'. The main panel shows the configuration for a 'Group' (GR_898D536041AB4DE54). It features tabs for 'OVERVIEW', 'TASKS', 'COURSE', and 'ASSETS'. The 'OVERVIEW' tab is active, displaying fields for 'Name' (Curriculum), 'Language' (English (United States)), 'library Autostart', and 'Short Description'. A 'Description' field is also present, showing a preview of a document titled 'Strategies'. On the right side of the configuration panel, there are buttons for 'New...', 'library', 'QR Code', 'More...', 'Version: 4', 'Publish', 'Save', and 'Cancel'.

The SAP Workforce Performance Builder Manager comes with a brand new graphical user interface. The modernized look and feel provides flatten design elements, fresh colors, updated icons, enlarged text and an improved emphasis of important and selected elements.

Совместная разработка контента

Дополнительные возможности

New Synchronization option: „Must have“



- Push dedicated content centrally to other content developers
- Objects with this synchronization behavior will be downloaded automatically during synchronization, no need for manual checkout
- Shortcut is created for the group to enable fast access from “Insert...” dialog
- Allows to easily share media libraries including templates to ensure all content developers make use of centralized assets

Author notification for expired passwords

Password expired!
please set a new password now

Once the password has been expired the Producer is prompting the user to change the password – no more need to log into server first.

Other new features

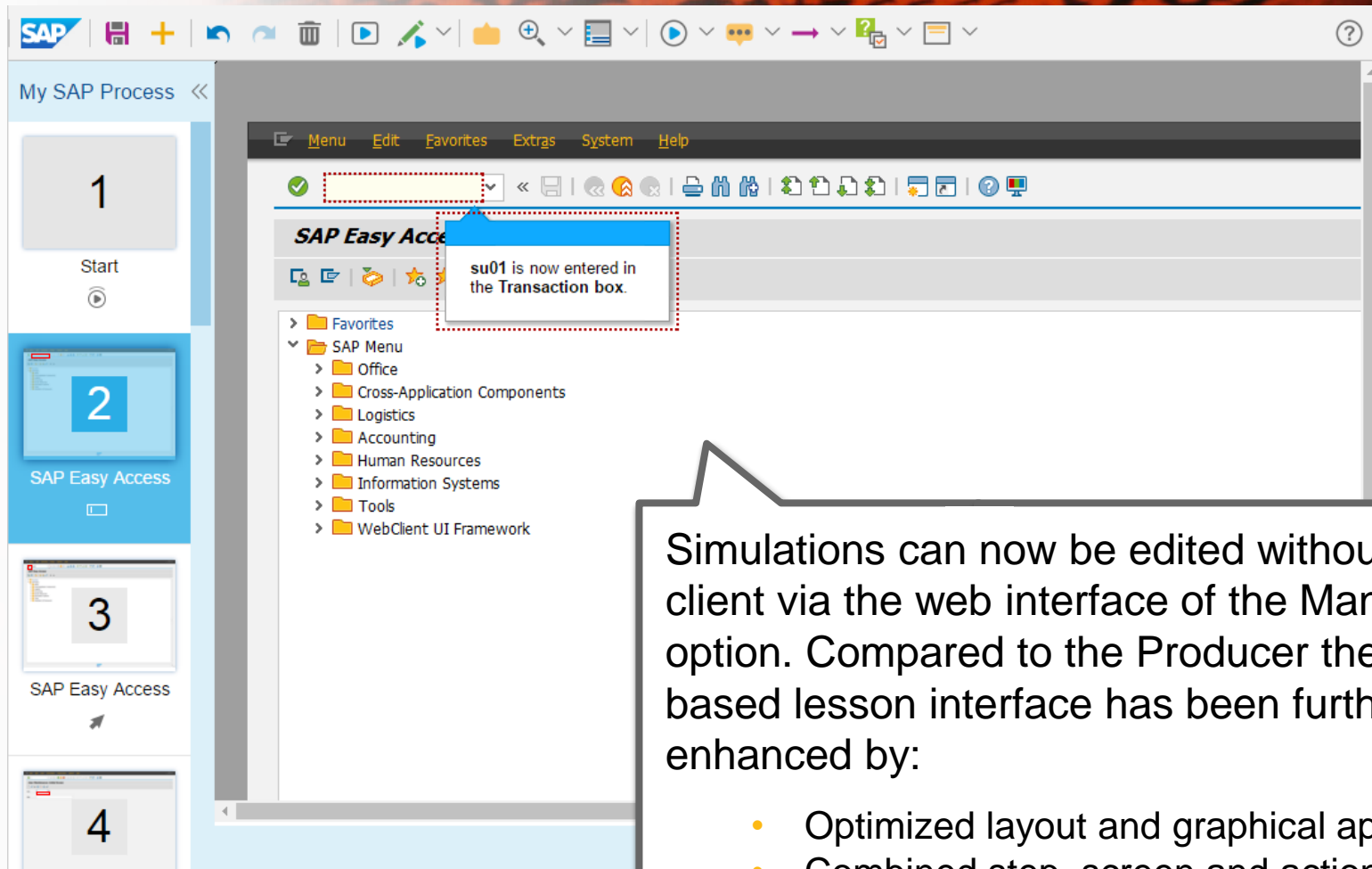
- Delete on server option now available for unsorted objects and changed behavior
- Bulk change of „recommended synchronization mode“ is now available
- New permission to restrict upload of active content (e.g. .html, .htm or .js files)

Запись и редактирование симуляций

Сократите затраты на разработку, сделайте процесс создания симуляций более гибким и оцените улучшения в SAP Workforce Performance Builder.

Запись и редактирование симуляций

Web-редактор



Simulations can now be edited without a local client via the web interface of the Manager option. Compared to the Producer the web-based lesson interface has been further enhanced by:

- Optimized layout and graphical appearance
- Combined step, screen and action element
- Retractable thumbnail view and property sheet

Запись и редактирование симуляций

Распознавание и быстрая запись

Enhanced application support

Optimized object recognition and re-recognition during process capture for the following applications and front-end technologies:

- SAP UI5
- Success Factors
- SAP Hybris
- SAP NWBC 5.0 and 6.0
- MS Office 2016

**Your target
application**

**Workforce
Performance
Builder**

Quick recording improvements

The Quick Recording has been enhanced and improved by the following possibilities:

- Audio capturing is supported when audio has been activated for the project.
- Quick Recording content can be localized or updated by using the interactive ReRecording
- Upon pause a hint is shown to enable an easy access to continue or stop the recording
- Dedicated mouse pointer appears during recording to make it obvious that the recording is in progress
- The recognition quality has been further improved

Запись и редактирование симуляций

Дополнительные возможности

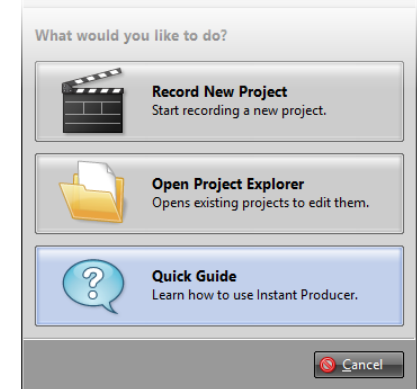
SAP GUI Scripting Validation

When trying to record a SAP GUI based application without SAP GUI scripting enabled on server, a hint will now notify the author.



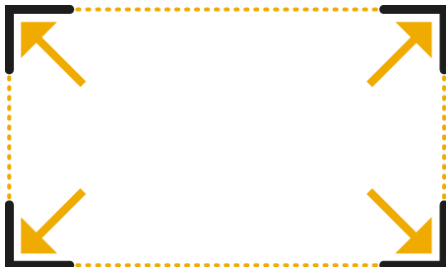
Integrated Tutorial in Instant Producer

The Instant Producer tutorial provides first time users a general overview and explains the basic functionalities.



Fit Application Window to Region

A new option allows to automatically fit the selected application window to the recording area upon application selection.



Other features

- Editing tables now easily allows to add and delete columns, rows or whole table
- The logo shown in content player can now be disabled individually
- For input texts in simulations an option was added to confirm text entry upon leaving field

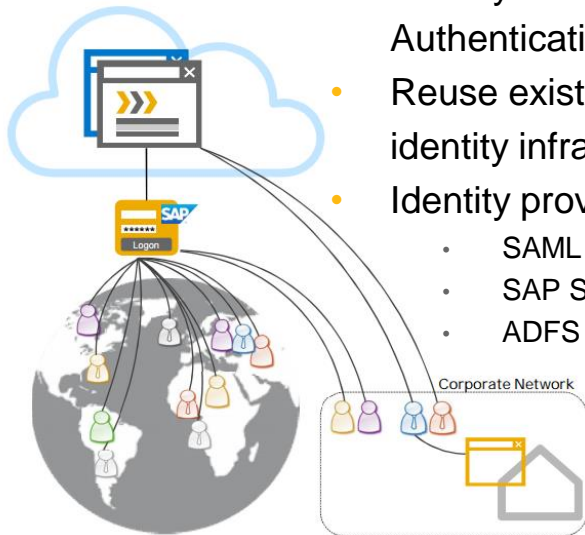
ИТ составляющая

Overview on new functionality

Cloud Edition now comes with SAP Cloud Identity service

SAP Cloud Identity is now integrated into SAP Workforce Performance Builder, Cloud Edition and offers the following capabilities:

- Secure access and Single Sign-On for web & mobile
- Identity Federation and Authentication
- Reuse existing corporate identity infrastructure
- Identity provider options:
 - SAML 2.0 IDP
 - SAP SSO
 - ADFS 2.0



System compatibility

- Program installation and recording functions are supported with **Microsoft Windows 10**
- Content recording and playback are supported for **Microsoft Edge** browser
- Microsoft Office 2016 is now supported for documentation creation

Your target
application

Workforce
Performance
Builder

Документация

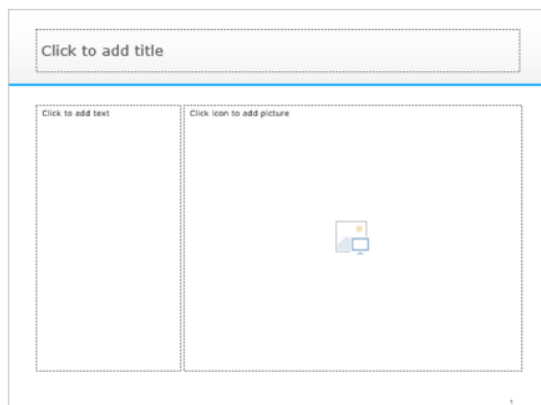
Мы добавили новые возможности в процесс создания профессиональной документации и пользовательских инструкций — как электронных так и печатных.



Документация

Обзор новой функциональности

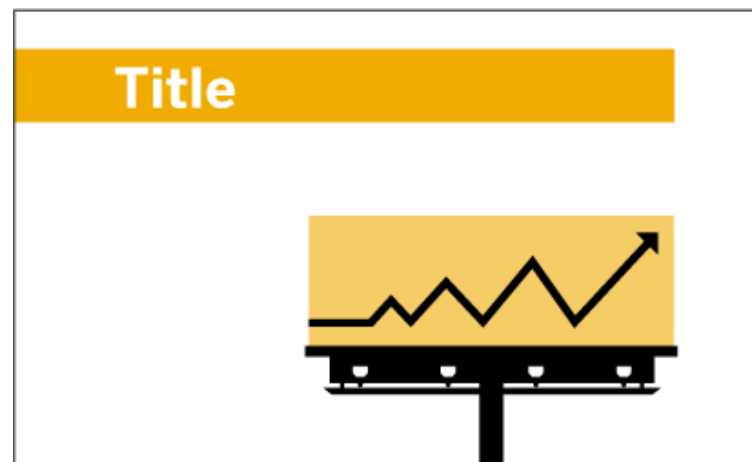
PowerPoint Templates



To enhance the flexibility of the PowerPoint documentation output format, a new PowerPoint template was added. This enables the creation of different PowerPoint layouts.

- Title, text and images can be positioned freely
- 4:3 and 16:9 templates are provided by default
- Available for both left-to-right as well as right-to-left languages

Cover pages for PowerPoint documentation



The PowerPoint documentation outputs now support having a cover page.

Документация

Добавление в документацию дополнительной информации

Glossary in Documentation



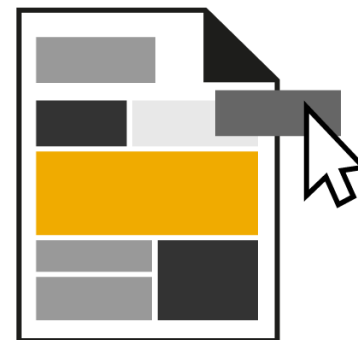
Glossary entries will now be included into Word, PDF and HTML documents.

All used terms are inserted into a central table - links to these terms are automatically create for each occurrence within the respective document.

The glossary table can be positioned by using fragments within documentation settings.

Fragments for Compound Documents

Fragments provided for the compound document enable a flexible configuration, e.g. by adding general information at the beginning or a glossary at the end of the document.



Text styles in Documentation

Using individual text styles for documentation types allows a flexible configuration of document outputs.

Text styles optimized for documentation might have a different text size or font than used in simulations.

Документация

Дополнительные возможности

Book pages in Single Documents

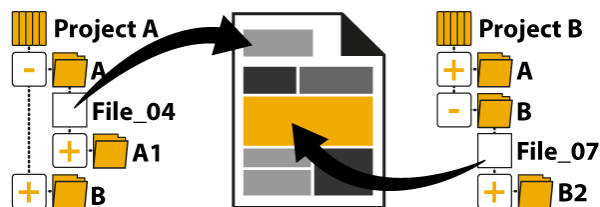
Book pages objects can now set to be displayed in the documentation individually. Even initially hidden objects can be incorporated into the documentation.

Similar to the compound document, book pages can be inserted as image.

Screen Images Tooltips

Screen titles are used as tooltips in Word, PDF and HTML documentation outputs to further enhance the accessibility of generated documents

Cross-Project Links in Compound Document



Cross-project links are handled as bookmarks in the Compound Document to enable the chapter spanning navigation in the generated document.

Generate Compound Document from within Producer Toolbar

Compound documents can be generated directly from within the Producer toolbar

Поддержка производительности

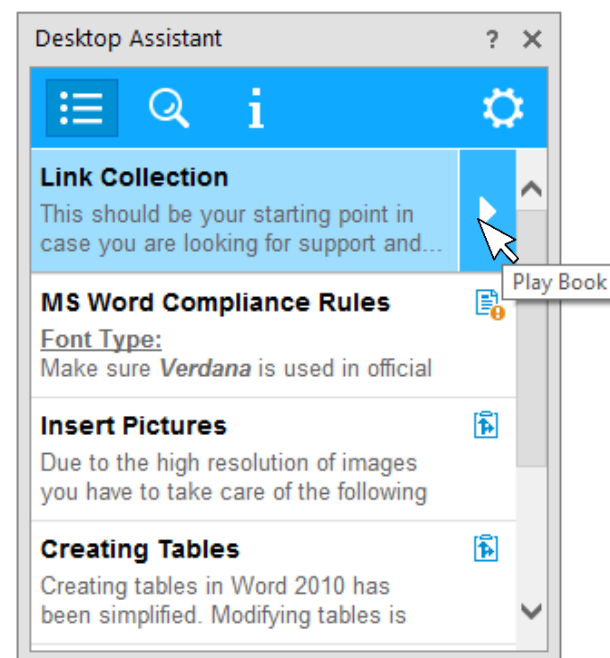
Предоставьте поддержку в момент, когда она требуется. Новые функции SAP Workforce Performance Builder помогут вашим пользователям работать эффективно с 1 дня.

Поддержка производительности

Новый дизайн Ассистента рабочего стола

The new Desktop Assistant layout provides an improved content representation, offers an optimized overview and faster access to the offered contents:

- A preview of the object description is shown in the main Desktop Assistant window for each object
- Content can now be started directly from the main window – the default playback mode can be defined centrally for simulations and documentation
- Project details are displayed within the same window to reduce the required screen estate
- Context help and request content can be accessed from within the sidebar submenu
- Scrolling is supported within the project and step list
- Search hits will be highlighted



Поддержка производительности

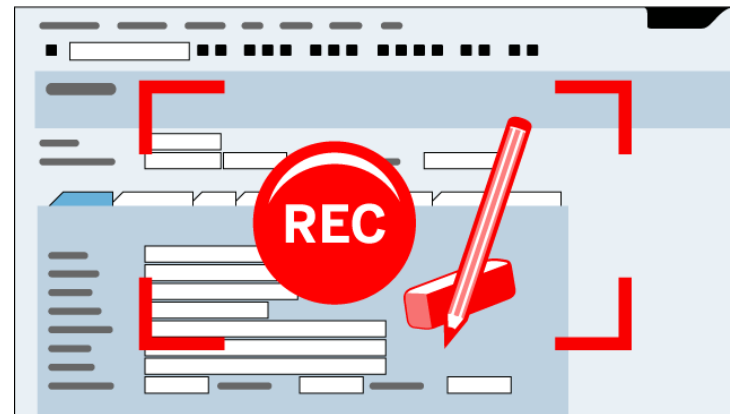
Пользовательский контент и редактирование в приложении

User generated content: Sticky notes

Users can now create a note with personal information or links.

The created note will automatically be displayed when the user is working in the same application.

In-application creation workflow



To simplify creation of guided tours and context help, authors can now record and edit navigator projects directly within the application.

Additional didactical hints can be added, bubble size, orientation, and position as well as the text can be changed directly after the object has been recorded.

Поддержка производительности

Новые возможности для авторов (разработчиков)

Automatically generate Desktop Assistant on publishing

When content is published, manually or automatically by using publishing rules, the Desktop Assistant is generated automatically to ensure the latest updates are included

Edit context information

Regular expressions can now be used as search terms to allow the replacement of multiple page key values at once.

A new preview feature will allow the author to verify the changes before applying them to the content.

More focus layer options

The focus layer is used to emphasize the current step in a Guided Tour can be specified on step level now.

This allows to individually switch the layer off for certain modal dialogs or to use it for explanations as well.

Other authoring changes

- Improved ability to add and update context information for other objects than navigations
- Improved conversion from simulation to navigation project
- Multifiles can be read by Navigator as well
- Force next button for steps in Guided Tours



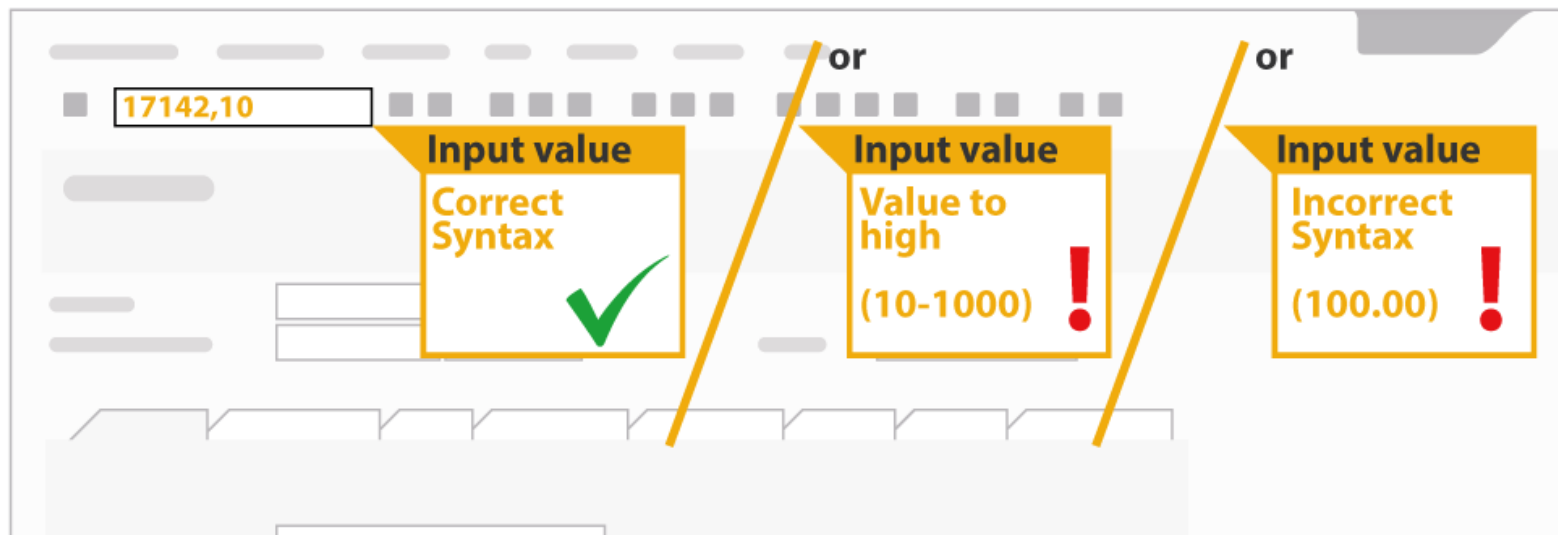
А теперь про 9.5 SP1 ☺

Поддержка производительности

Input value depending display of help elements

By using conditions, users are provided with appropriate help based on their input when using edit fields in supported applications.

Conditions can be defined for both Context Help and Guided Tours by either using a preset (e.g. value ranges, specific values) or any other custom definition stated by a regular expression. This capability will have a substantial impact on how users experience process guidance and contextual help and as such will help ensure high data quality and compliance.



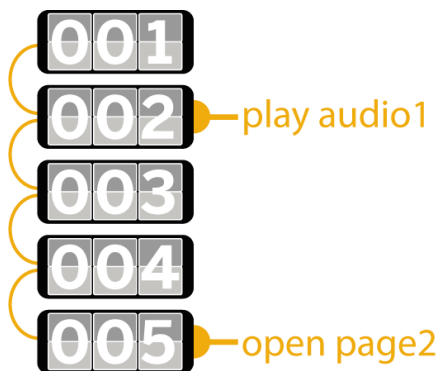
Быстрое обучение

Новый объект книги: Счётчик

The new counter object for books enables authors to add a variety of interactions. It is counting up on any assigned action (such as hide, show, click...) of other objects on the book page and triggers further actions based on a specific count.

Authors can define how many clicks are required to trigger a certain action or limit the number of attempts for a certain task.

Object actions can enable, disable, count up or reset the counter.



Новый объект книги: Сборщик

By using the collector authors can now define a sequence of different book page actions in order to trigger a new action as e.g. showing an image.

The collector is counting the actions of assigned objects sequentially and allows further triggers based on a certain count.

In difference to the counter object the collector is transferring only one count per object. By doing so the user has e.g. to click on all defined images to proceed, a repetitive click on the same image is not counted.



ИТ составляющая

HANA DB Edition of WPB

- The newest SAP Workforce Performance Builder offering is a HANA native application
- Complete, fully featured on-premises solution
- Running on innovative SAP HANA data base
- Comes with simplified license model:
 - SAP Workforce Performance Builder, authoring option (mat. 7018863)
 - SAP Workforce Performance Builder, consumption option (mat. 7018864)



HANA
Database

System compatibility

- Re-recording (both automatic and interactive) as well as navigator playback are now supported with **Microsoft Windows 10**
- SAP Workforce Performance Builder, Manager component now supports **Microsoft® SQL Server 2014**
- SAP Workforce Performance Builder, Manager component now supports **Apache Tomcat 9**

**Your target
application**

**Workforce
Performance
Builder**



Спасибо!

Контактная информация:

Anton Mavrin
Education Architect
SAP Education CIS
Anton.Mavrin@sap.com